

Retro-Fit

Pumps

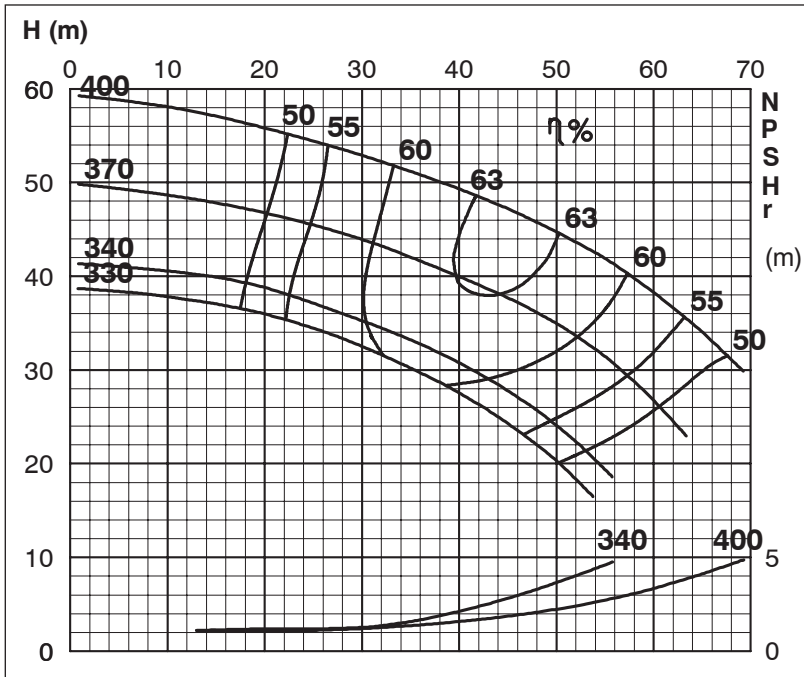
TECHNICAL SPECIFICATIONS



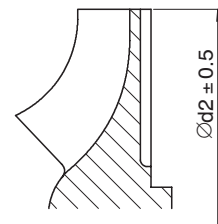
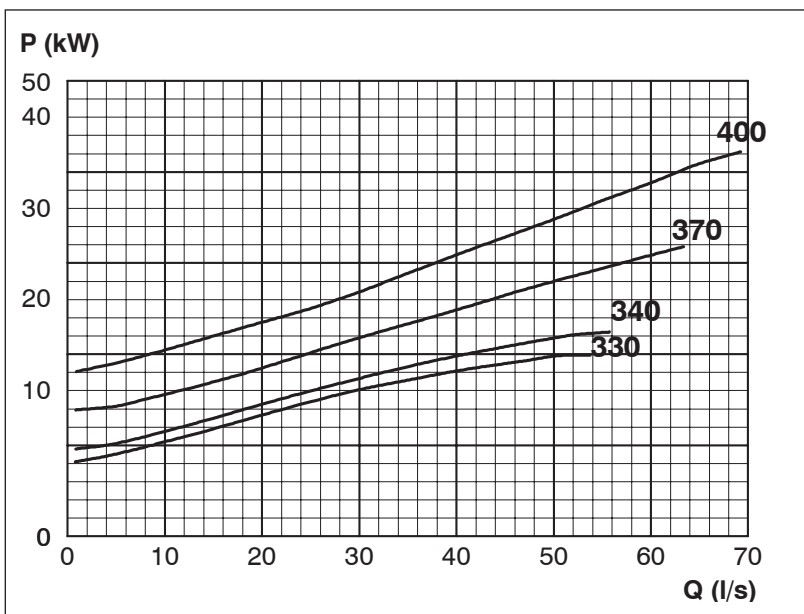
ISP Process Pumps - ISP100-400
ISP Impeller 283882 Open B18 Z4

Performance Curve - ISP100-400-1470

1470 rpm



Impeller Dia
$\varnothing d_2$ (mm)
400
395
390
385
380
375
370
365
360
355
350
345
340
335
330



MTP127

Exclusively Distributed by