

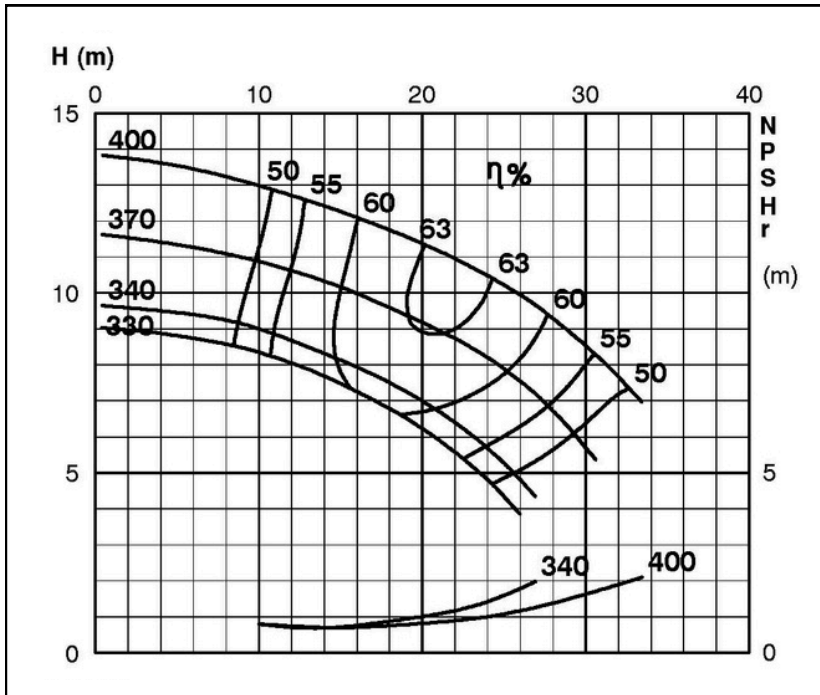
TECHNICAL SPECIFICATIONS



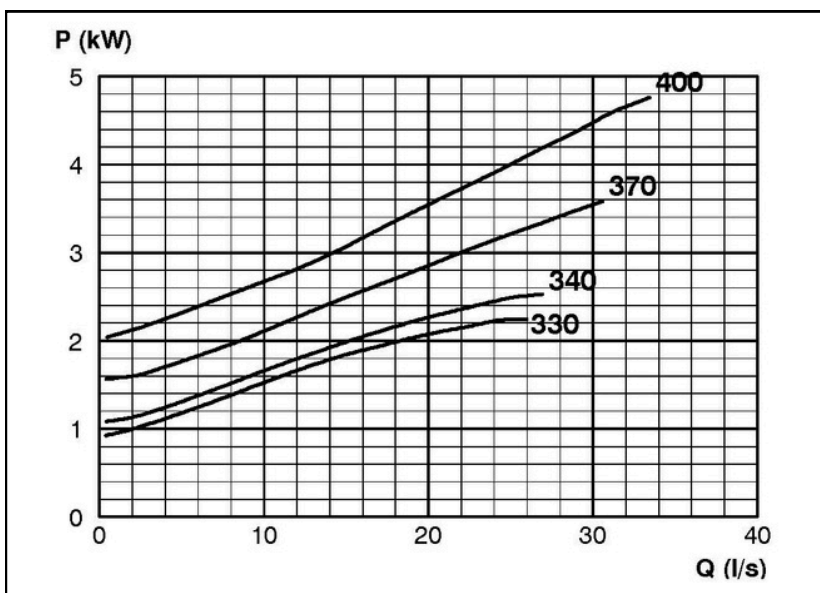
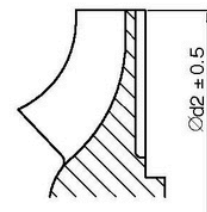
ISP Process Pumps - ISP100-400 (125-100-400) ISP Impeller 283883 OPEN B29 Z4

Performance Curve - ISP100-400-O-720

720 rpm



| IMPELLER DIA |
|----------------------|
| ∅d ₂ (mm) |
| 400 |
| 395 |
| 390 |
| 385 |
| 380 |
| 375 |
| 370 |
| 365 |
| 360 |
| 355 |
| 350 |
| 345 |
| 340 |
| 335 |
| 330 |



RET13919