

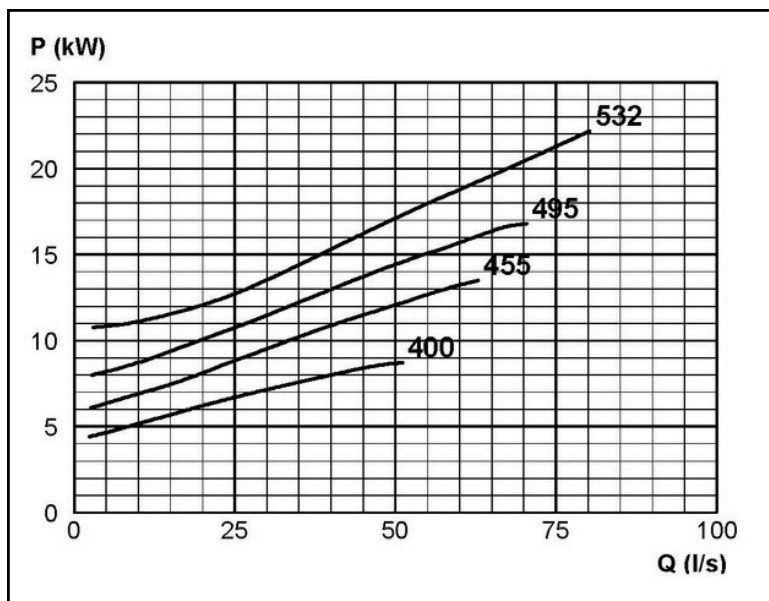
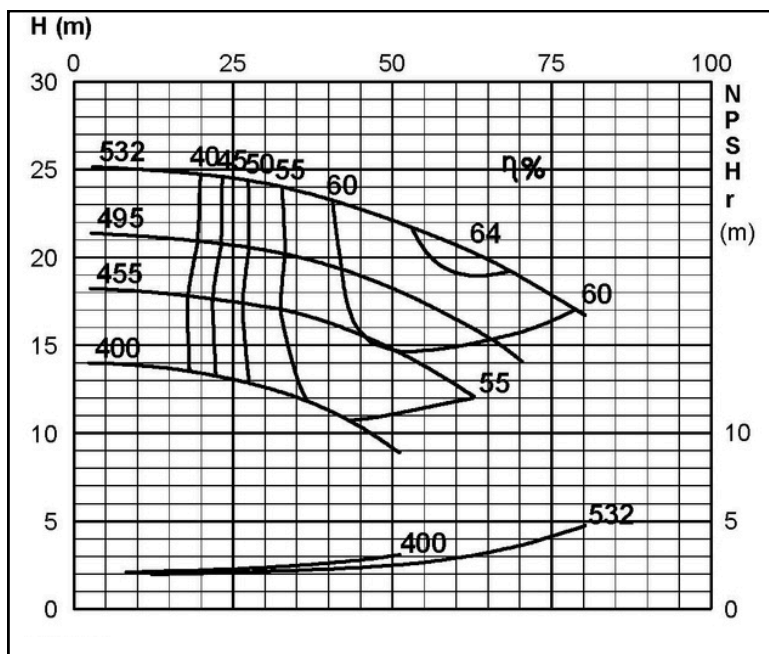
## TECHNICAL SPECIFICATIONS



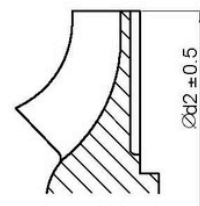
### ISP Process Pumps - ISP100-500 (200-100-500) ISP Impeller 285944 OPEN B24 Z4

#### Performance Curve - ISP100-500-O-730

730 rpm



IMPELLER DIA
∅d <sub>2</sub> (mm)
532
525
520
515
510
505
500
495
490
485
480
475
470
465
460
455
450
445
440
435
430
425
420
415
410
405
400



RET13929