

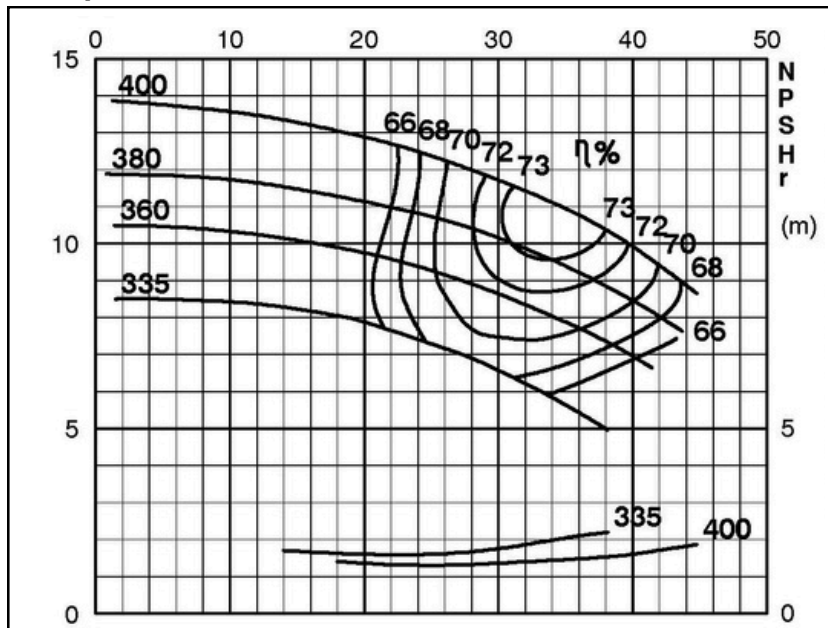
## TECHNICAL SPECIFICATIONS



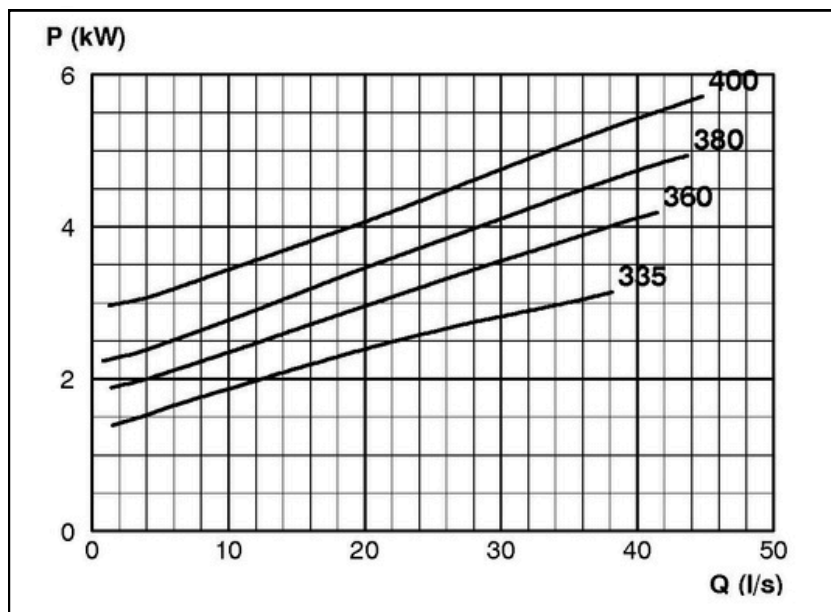
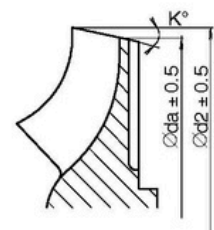
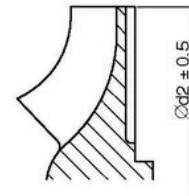
### ISP Process Pumps - ISP125-400 (150-125-400) ISP Impeller 283883 OPEN B29 Z4

#### Performance Curve - ISP125-400-O-720

720 rpm



IMPELLER DIA		
∅d <sub>2</sub> (mm)	K°	∅d <sub>a</sub> (mm)
400		
395		
390	1	389
385	2	382.5
380	3	375
375	3	372
370	4	366
365	4	361
360	5	354
355	6	348
350	8	341
345	9	334.5
340	10	329
335	11	322.5



RET13920