

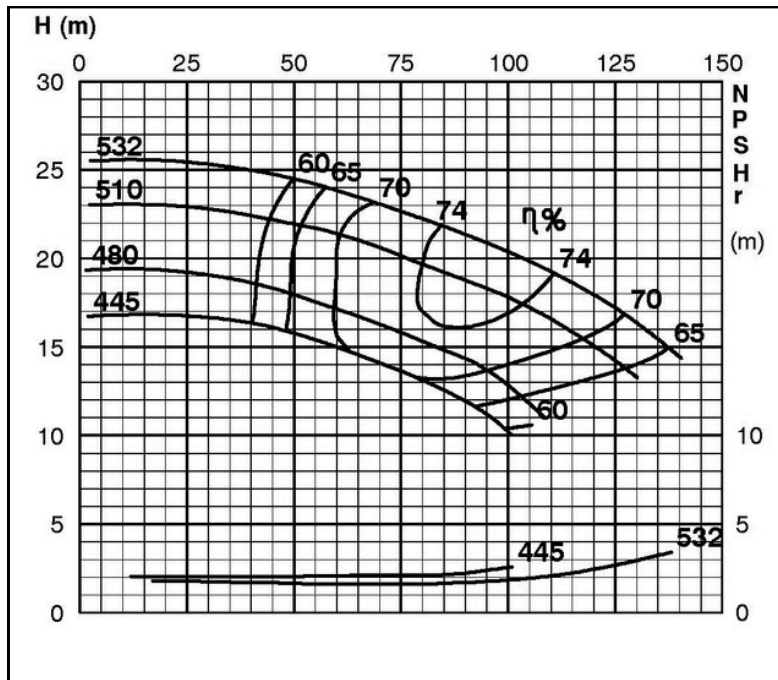
TECHNICAL SPECIFICATIONS



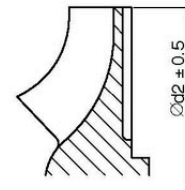
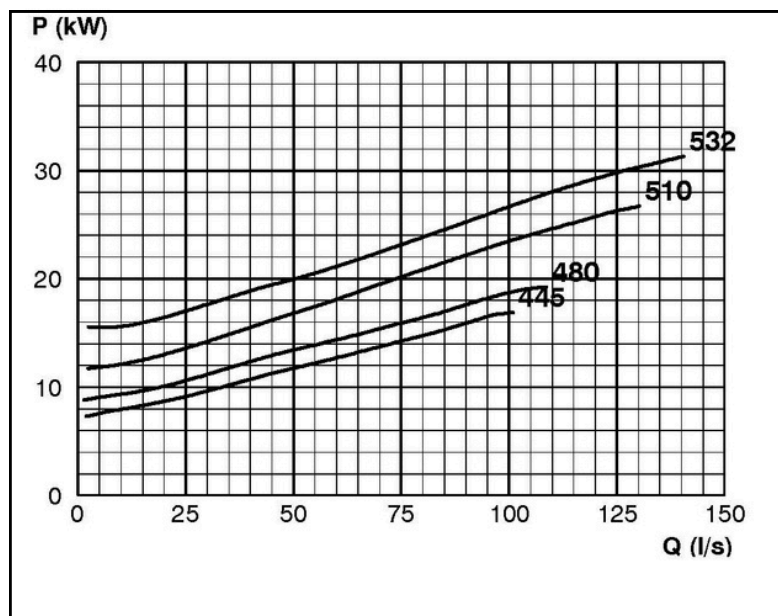
ISP Process Pumps - ISP150-500 (250-150-500) ISP Impeller 283896 OPEN B40 Z4

Performance Curve - ISP150-500-O-740

740 rpm



IMPELLER DIA
∅d ₂ (mm)
532
525
520
515
510
505
500
495
490
485
480
475
470
465
460
455
450
445



RET13930