

# Retroc-Fit

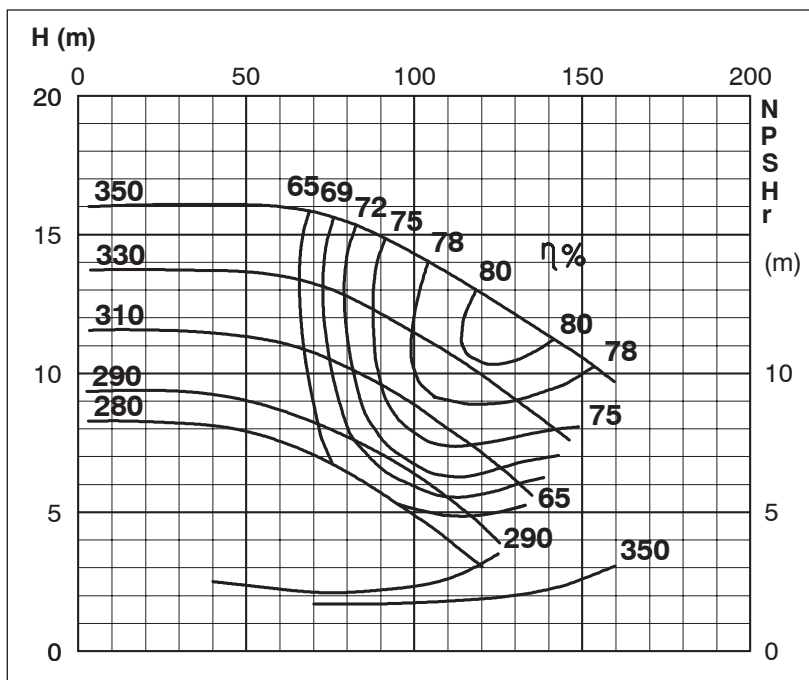
Pumps

## TECHNICAL SPECIFICATIONS

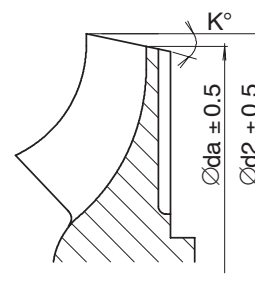
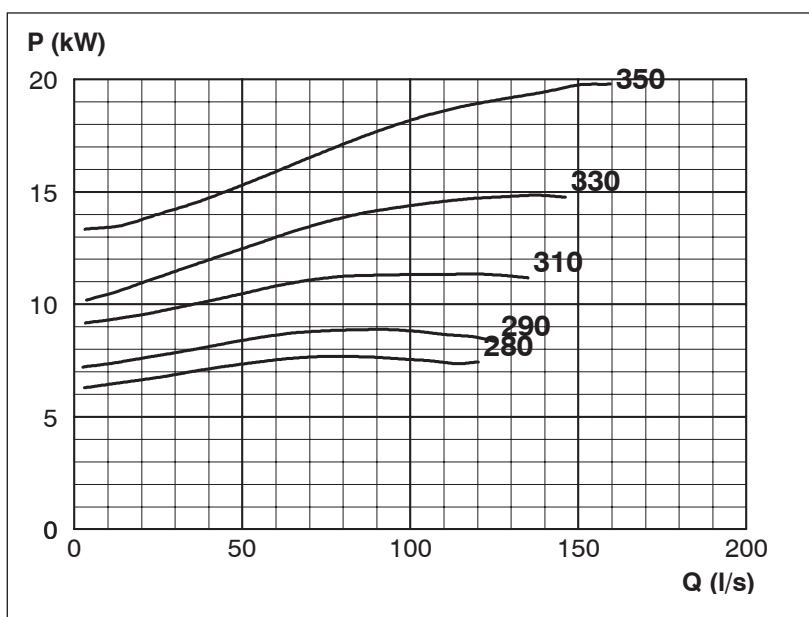
**Retroc-Fit** Pumps **ISP Process Pumps - ISP200-315 (250-200-315)**  
**ISP Impeller 283887 Open B48 Z5**

Performance Curve - ISP200-315-O-980

980 rpm



Impeller Dia		
Ød <sub>2</sub> (mm)	K°	Øda (mm)
350	5	341.6
345	6	334.8
340	7	327.8
335	8	320.9
330	9	314.0
325	10	306.9
320	11	299.8
315	12	292.8
310	13	285.5
305	14	278.1
300	15	270.8
295	16	263.3
290	17	255.8
285	18	247.9
280	19	240.0



MTP127

Exclusively Distributed by