

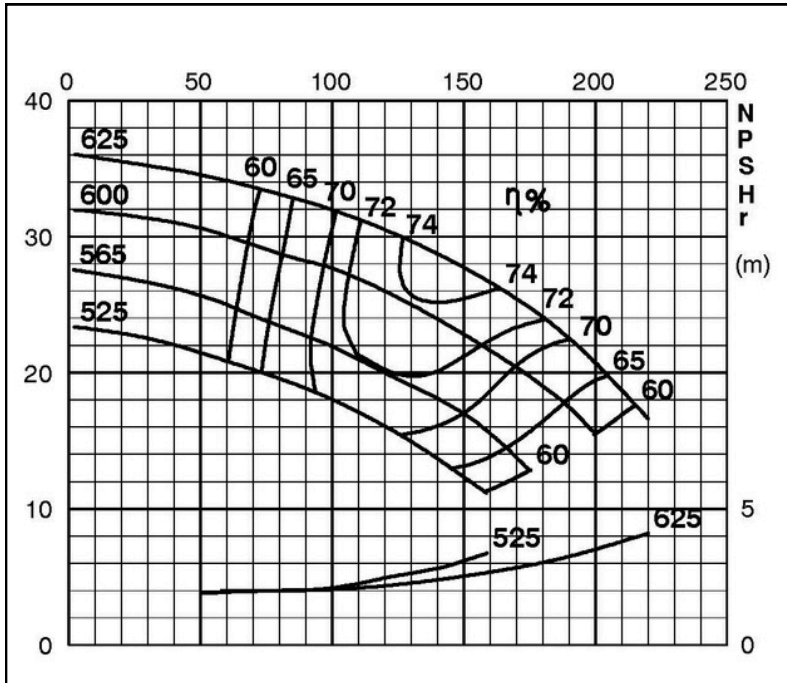
TECHNICAL SPECIFICATIONS



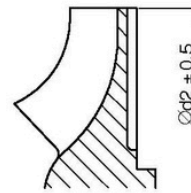
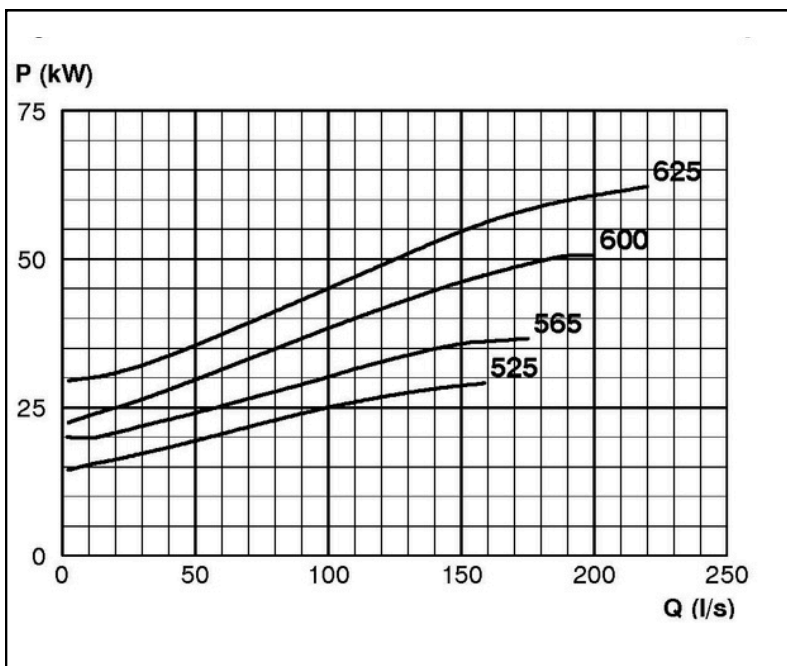
ISP Process Pumps - ISP200-600 (300-200-600) ISP Impeller 283938 OPEN B46 Z4

Performance Curve - ISP200-600-O-740

740 rpm



IMPELLER DIA
∅d ₂ (mm)
625
620
615
610
605
600
595
590
585
580
575
570
565
560
555
550
545
540
535
530
525



RET13937