

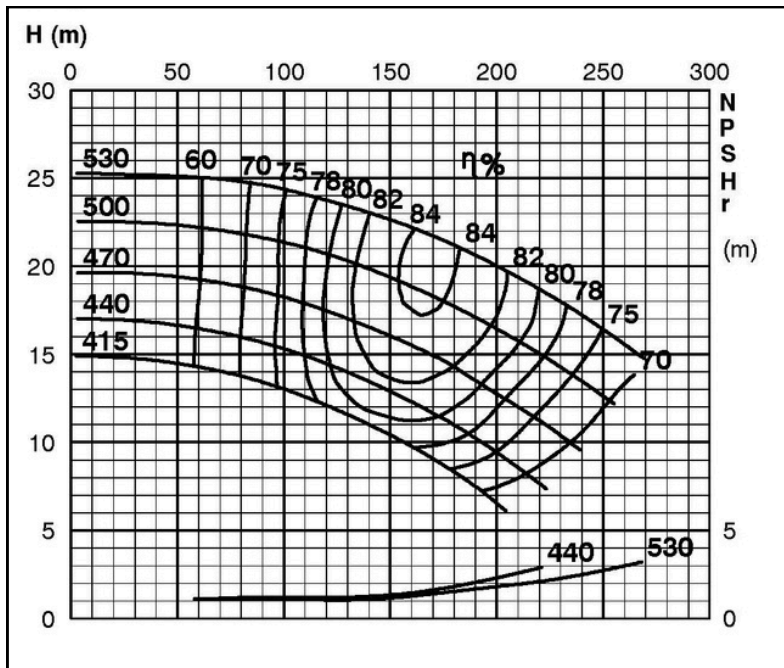
TECHNICAL SPECIFICATIONS



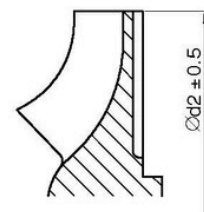
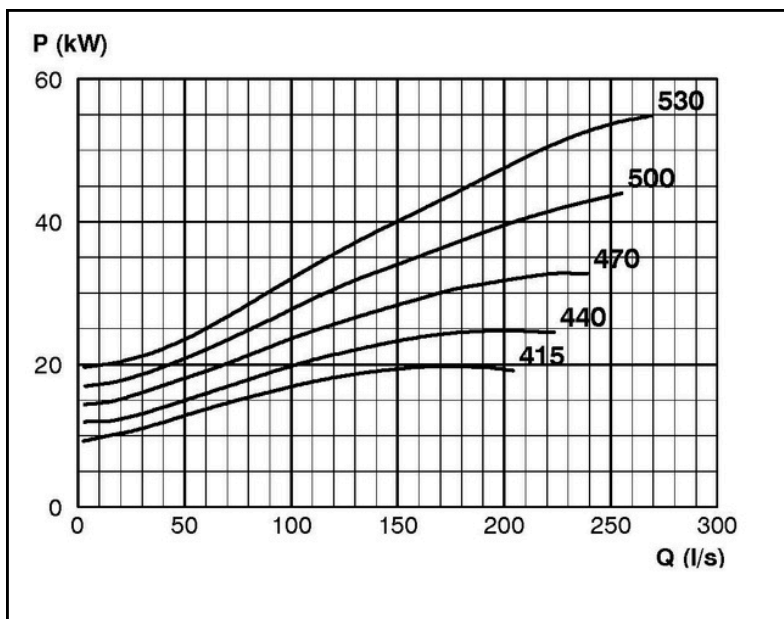
ISP Process Pumps - ISP250-500 (300-250-500) ISP Impeller 287904 OPEN B30 Z5

Performance Curve - ISP250-500-O-740

740 rpm



IMPELLER DIA
∅d ₂ (mm)
530
525
520
515
510
505
500
495
490
485
480
475
470
465
460
455
450
445
440
435
430
425
420
415



RET13932