

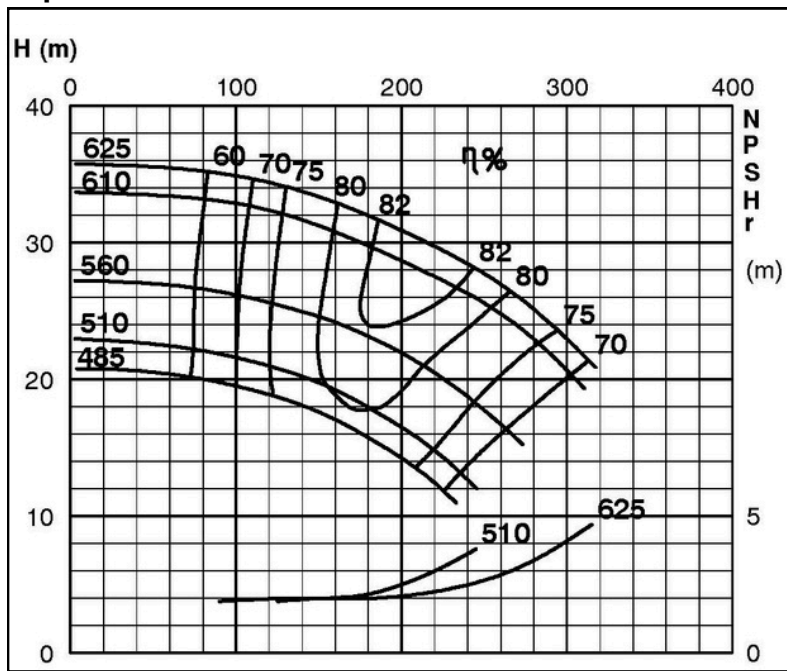
TECHNICAL SPECIFICATIONS



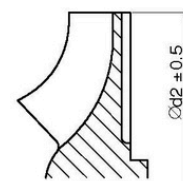
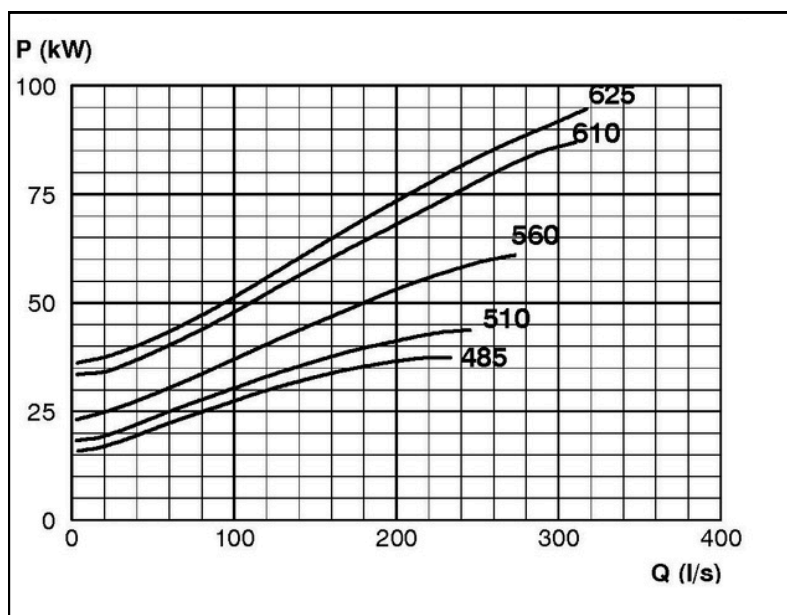
ISP Process Pumps - ISP250-600 (300-250-600) ISP Impeller 283939 OPEN B43 Z5

Performance Curve - ISP250-600-O-740

740 rpm



IMPELLER DIA
∅d ₂ (mm)
625
620
615
610
605
600
595
590
585
580
575
570
565
560
555
550
545
540
535
530
525
520
515
510
505
500
495
490
485



RET13938