

Retroc-Fit

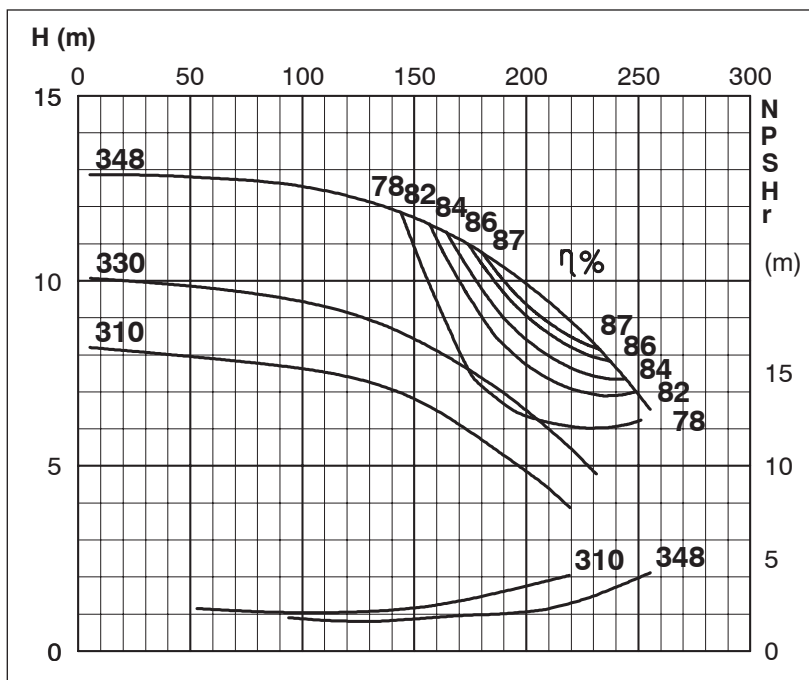
Pumps

TECHNICAL SPECIFICATIONS

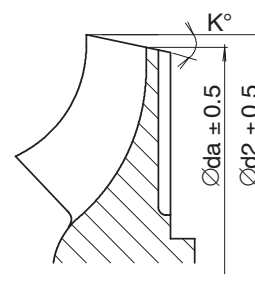
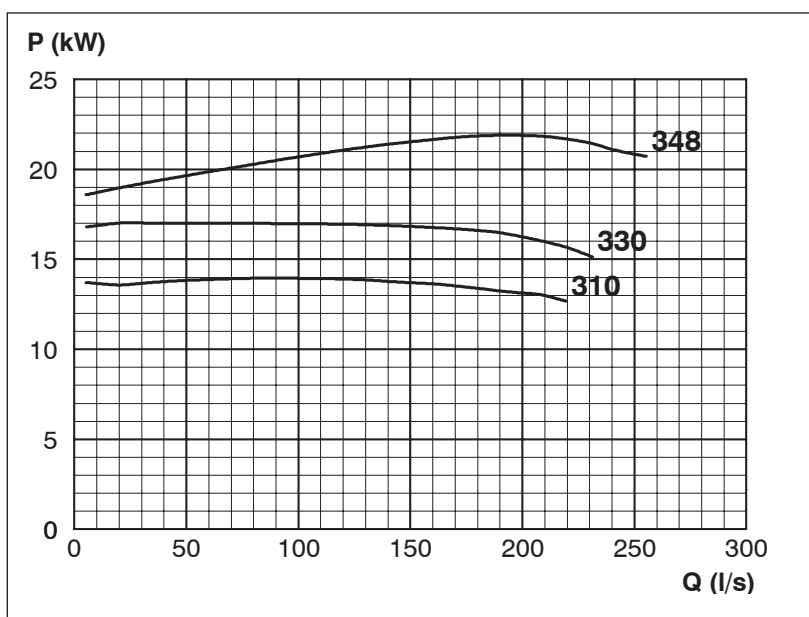
Retroc-Fit Pumps ISP Process Pumps - ISP300-250 (300-300-250)
ISP Impeller 283885 Open B71 Z5

Performance Curve - ISP300-250-O-980

980 rpm



Impeller Dia		
Ød ₂ (mm)	K°	Øda (mm)
348	17	307.1
345	18	301.1
340	19	292.8
335	20	284.4
330	21	275.9
325	22	267.3
320	23	258.3
315	24	249.1
310	25	239.8



MTP127

Exclusively Distributed by