

# Retroc-Fit

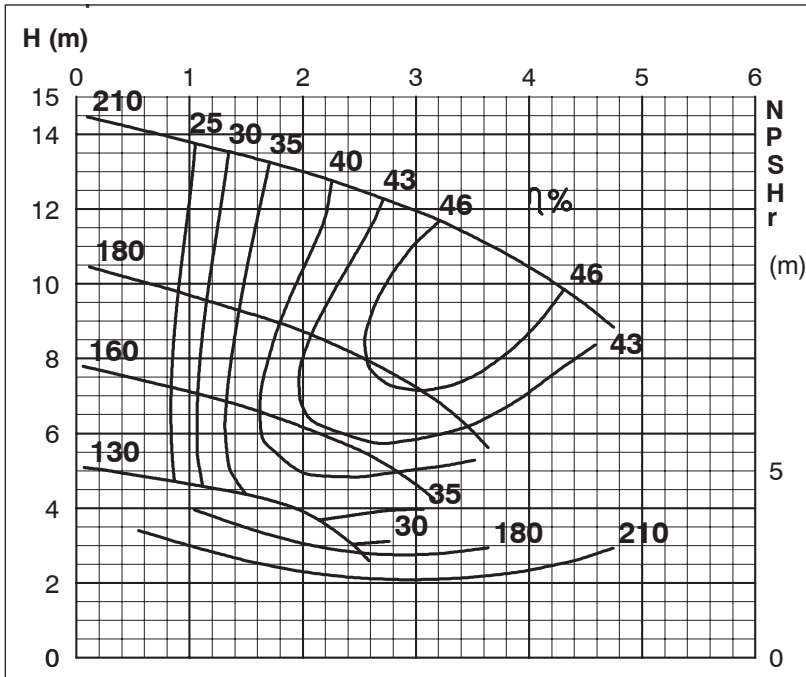
Pumps

## TECHNICAL SPECIFICATIONS

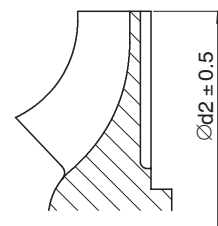
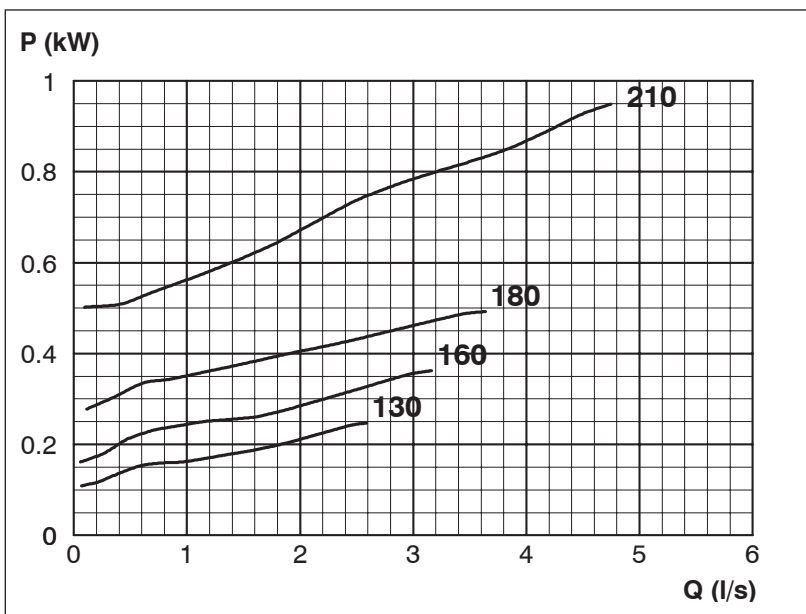
**Retroc-Fit** Pumps  
**ISP Process Pumps - ISP32-200**  
**ISP Impeller 283867 Open B8 Z3**

Performance Curve - ISP32-200-1420

1420 rpm



| Impeller Dia         |
|----------------------|
| Ød <sub>2</sub> (mm) |
| 210                  |
| 205                  |
| 200                  |
| 195                  |
| 190                  |
| 185                  |
| 180                  |
| 175                  |
| 170                  |
| 165                  |
| 160                  |
| 155                  |
| 150                  |
| 145                  |
| 140                  |
| 135                  |
| 130                  |



MTP127