

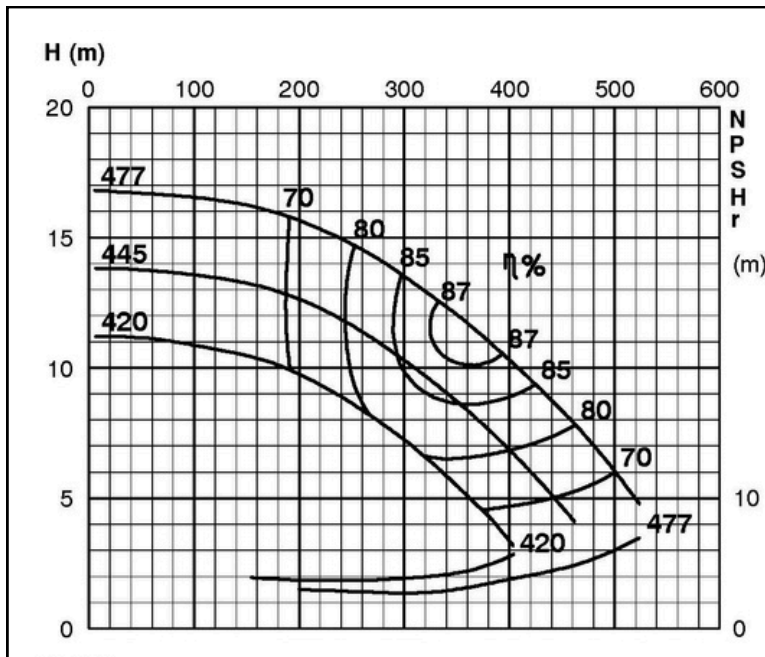
TECHNICAL SPECIFICATIONS



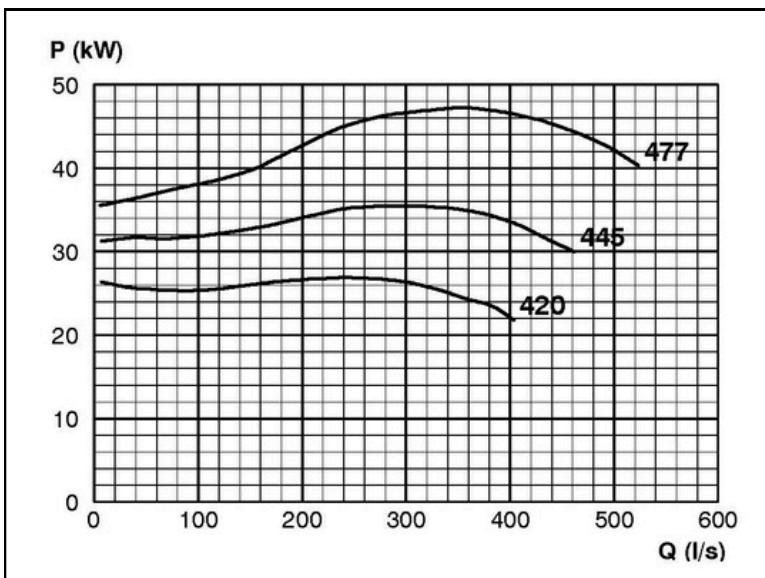
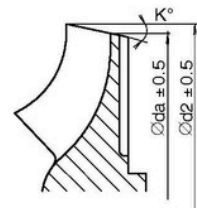
ISP Process Pumps - ISP350-500 (400-350-500) ISP Impeller 283894 OPEN B85 Z6

Performance Curve - ISP350-500-O-740

740 rpm



IMPELLER DIA		
Ød ₂ (mm)	K°	Øda (mm)
477	13	438.7
475	13	436.4
470	13	431.2
465	13	426.0
460	13	420.5
455	14	411.9
450	14	406.9
445	15	398.1
440	16	389.3
435	17	380.3
430	18	371.2
425	19	362.0
420	20	353.0



RET13927