

Retro-Fit

Pumps

TECHNICAL SPECIFICATIONS

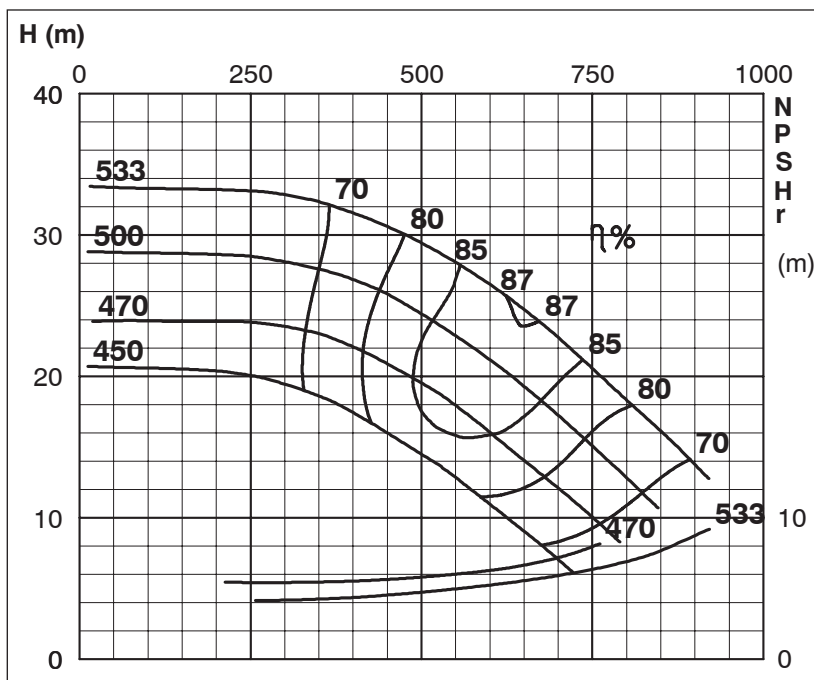
Retro-Fit
Pumps

ISP Process Pumps - ISP400-500 (400-400-500)

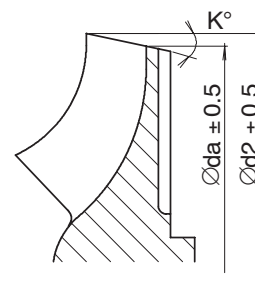
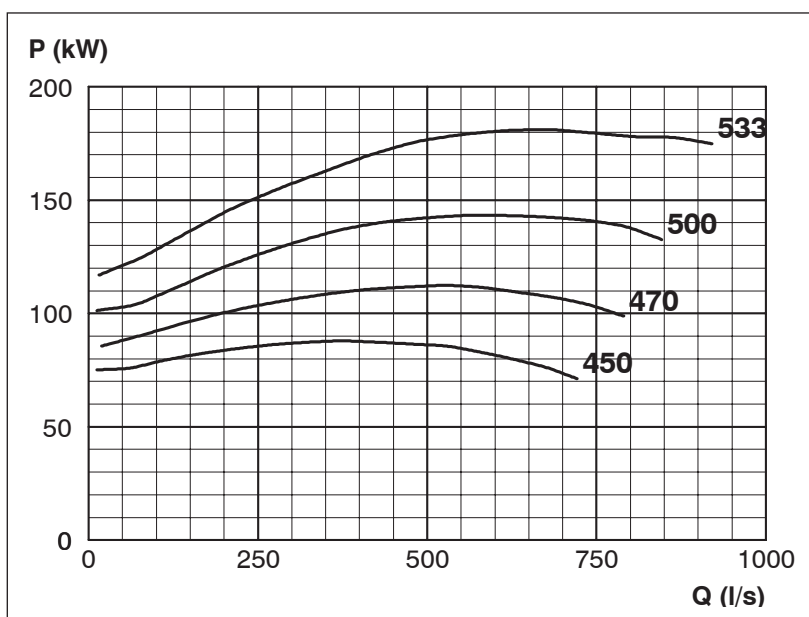
ISP Impeller 283895 Open B95 Z6

Performance Curve - ISP400-500-O-980

980 rpm



Impeller Dia		
Ød ₂ (mm)	K°	Øda (mm)
533	13	490.5
530	13	487.5
525	13	482.1
520	13	476.6
515	13	471.4
510	13	465.9
505	13	460.4
500	13	454.7
495	14	445.6
490	14	439.9
485	15	430.9
480	15	425.1
475	16	415.6
470	17	406.1
465	18	396.0
460	19	386.0
455	21	375.0
450	22	362.0



MTP127

Exclusively Distributed by