

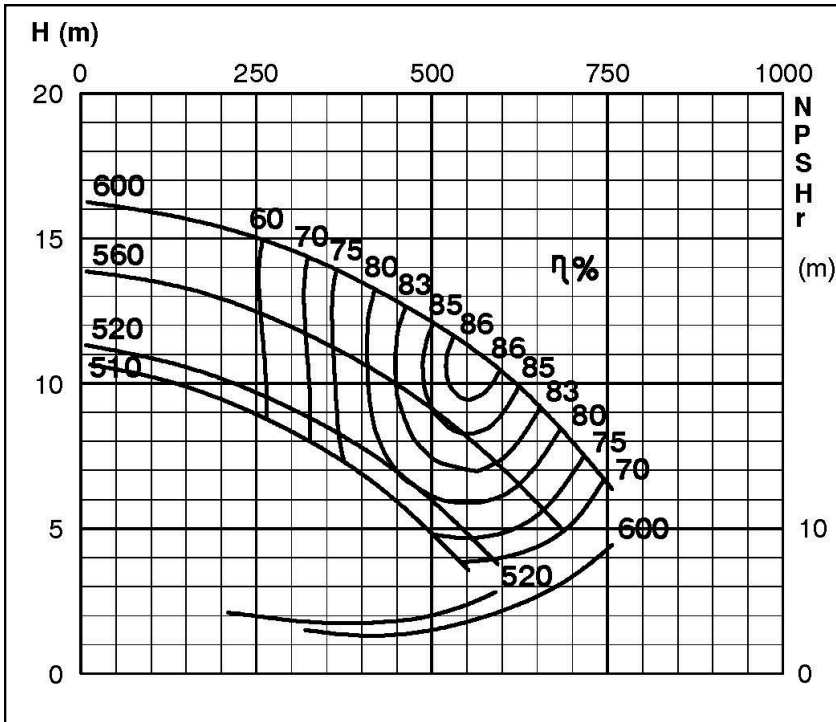
TECHNICAL SPECIFICATIONS



ISP Process Pumps - ISP500-600 (500-500-600) ISP Impeller 283900 OPEN B93 Z6

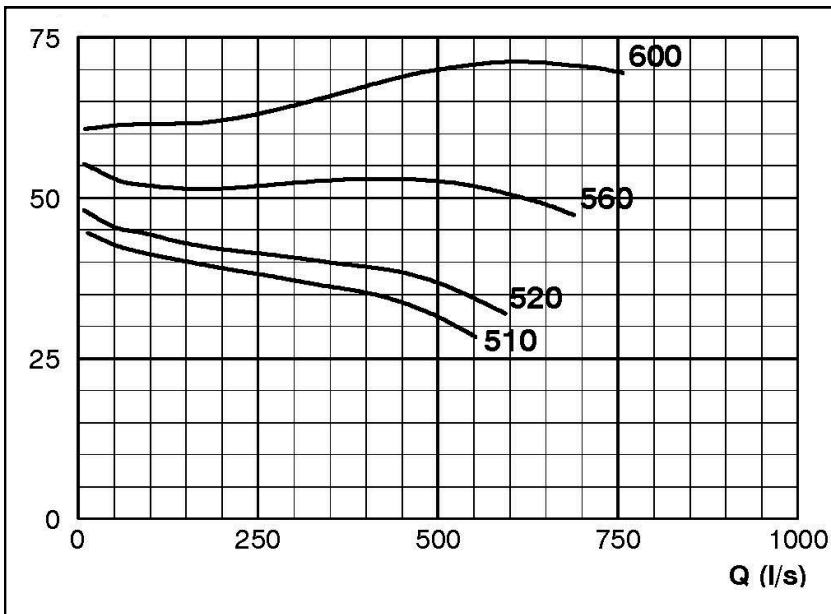
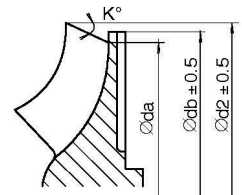
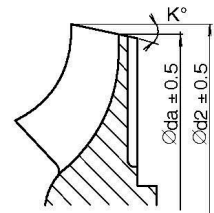
Performance Curve - ISP500-600-O-590

590 rpm



IMPELLER DIA			
∅d ₂ (mm)	K°	∅d _a (mm)	∅d _b (mm)
600	15	541.2	
595	15	535.7	
590	15	530.2	
585	15	524.7	
580	15	519.2	
575	16	509.7	
570	16	503.8	
565	16	498.3	
560	17	488.7	
555	17	482.5	
550	18	427.7	
545	18	466.8	
540	19	456.7	
535	19	450.7	
530	20	440.4	
525	20	434.0	
520	21	423.0	430 (*)
515	22	413.0	430 (*)
510	23	400.0	430 (*)

*) Only for ARP/ASP



RET13949