

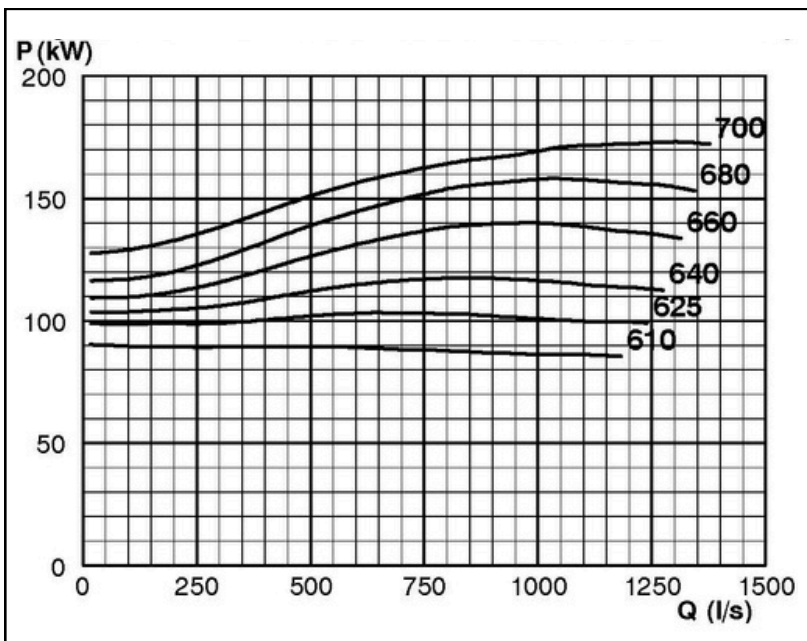
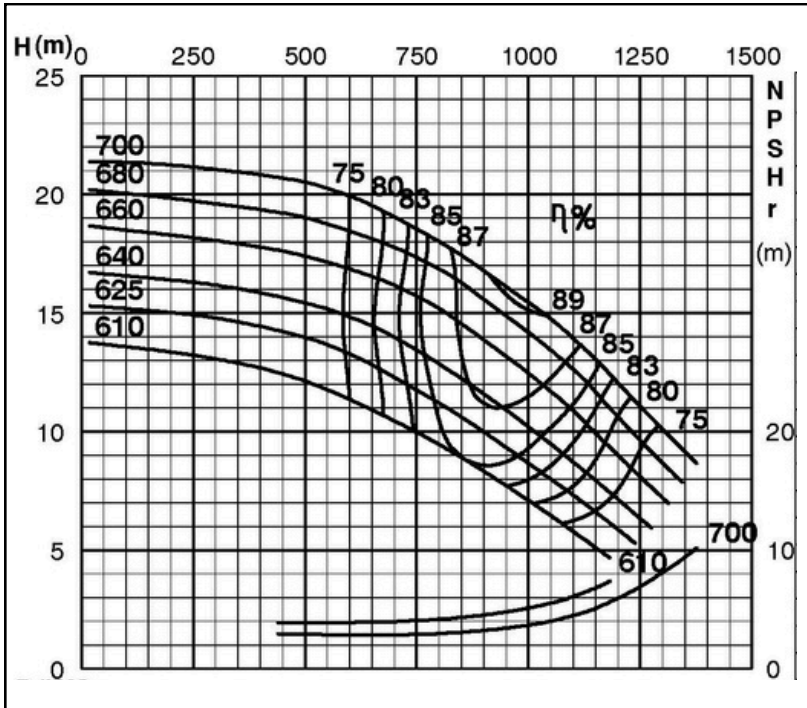
TECHNICAL SPECIFICATIONS



ISP Process Pumps - ISP600-700 (600-600-700) ISP Impeller 286875 OPEN B133 Z6

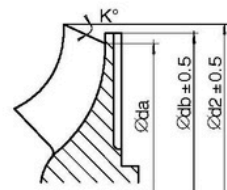
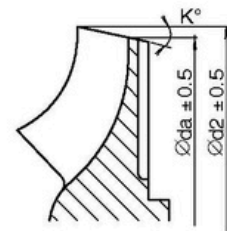
Performance Curve - ISP600-700-O-590

590 rpm



| IMPELLER DIA | | | | |
|----------------------|----|----------------------|-------|----------------------|
| Ød ₂ (mm) | K° | Ød _a (mm) | | Ød _b (mm) |
| | | APP | ARP | |
| 700 | 15 | 632 | 632.4 | |
| 695 | 15 | 625 | 626.0 | |
| 690 | 15 | 620 | 619.6 | |
| 685 | 15 | 614 | 613.2 | |
| 680 | 15 | 608 | 606.7 | |
| 675 | 16 | 598 | 595.6 | |
| 670 | 16 | 592 | 588.7 | |
| 665 | 16 | 586 | 582.3 | |
| 660 | 17 | 576 | 571.1 | |
| 655 | 17 | 570 | 563.8 | |
| 650 | 18 | 560 | 499.8 | |
| 645 | 18 | 554 | 545.5 | |
| 640 | 19 | 544 | 533.7 | |
| 635 | 19 | 538 | 526.7 | |
| 630 | 20 | 526 | 514.7 | |
| 625 | 20 | 520 | 507.2 | 520 (*) |
| 620 | 21 | 509 | 494.3 | 520 (*) |
| 615 | 22 | 498 | 482.6 | 520 (*) |
| 610 | 23 | 486 | 467.4 | 520 (*) |

*) Only for ARP



RET13956

Exclusively Distributed by