

Retroc-Fit

Pumps

TECHNICAL SPECIFICATIONS

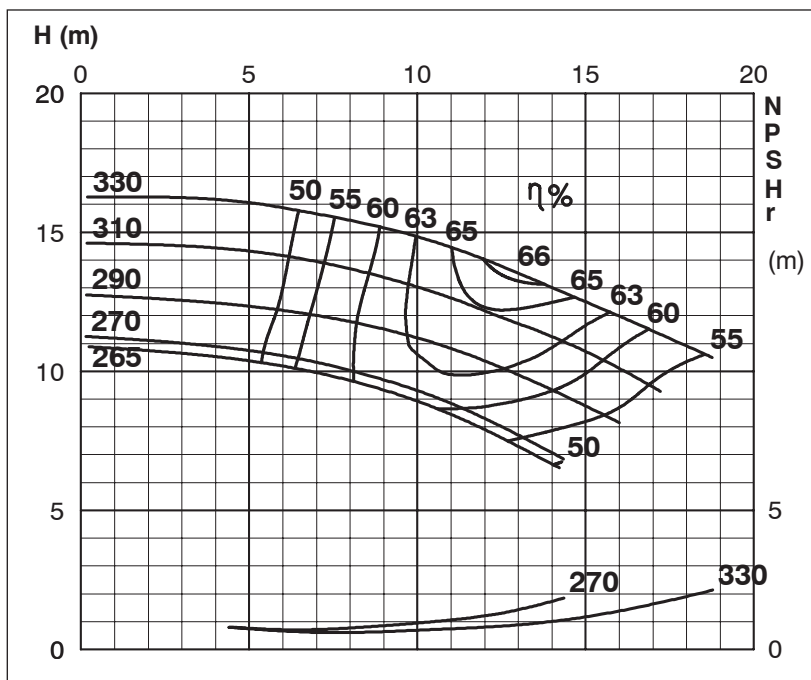
Retroc-Fit
Pumps

ISP Process Pumps - ISP65-315

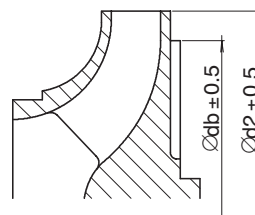
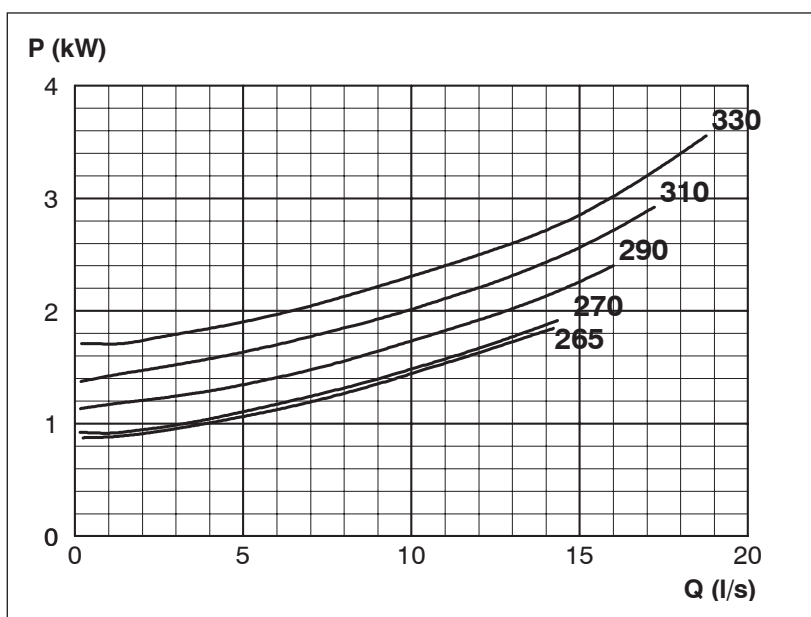
ISP Impeller 283913 Closed B9 Z5

Performance Curve - ISP65-315-960

960 rpm



Impeller Dia	
Ød ₂ (mm)	Ød _b (mm)
330	240
325	235
320	230
315	226
310	222
305	220
300	218
295	216
290	214
285	213
280	211
275	209
270	207
265	205



MTP127

Exclusively Distributed by