

Retro-Fit

Pumps

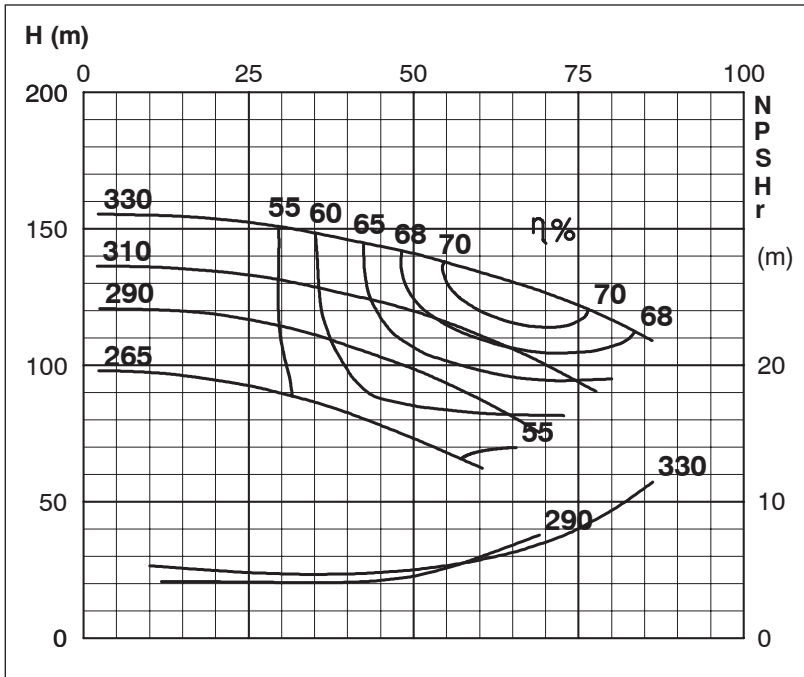
TECHNICAL SPECIFICATIONS



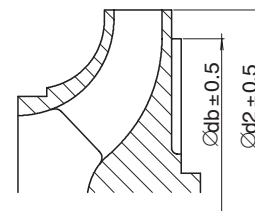
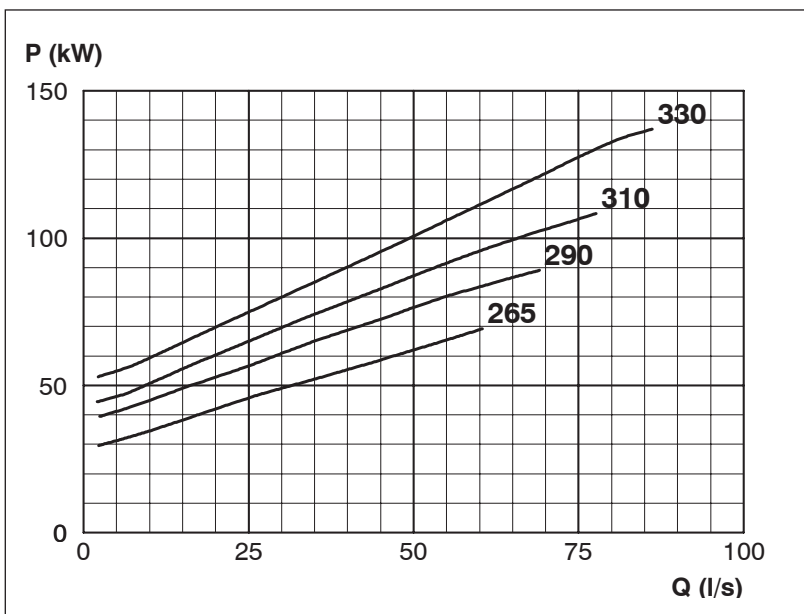
ISP Process Pumps - ISP80-315
ISP Impeller 283914 Closed B13 Z5

Performance Curve - ISP80-315-2950

2950 rpm



| Impeller Dia | |
|----------------------|----------------------|
| Ød ₂ (mm) | Ød _b (mm) |
| 330 | 260 |
| 325 | 256 |
| 320 | 251 |
| 315 | 248 |
| 310 | 245 |
| 305 | 242 |
| 300 | 239 |
| 295 | 237 |
| 290 | 234 |
| 285 | 232 |
| 280 | 230 |
| 275 | 228 |
| 270 | 226 |
| 265 | 224 |



MTP127

Exclusively Distributed by