

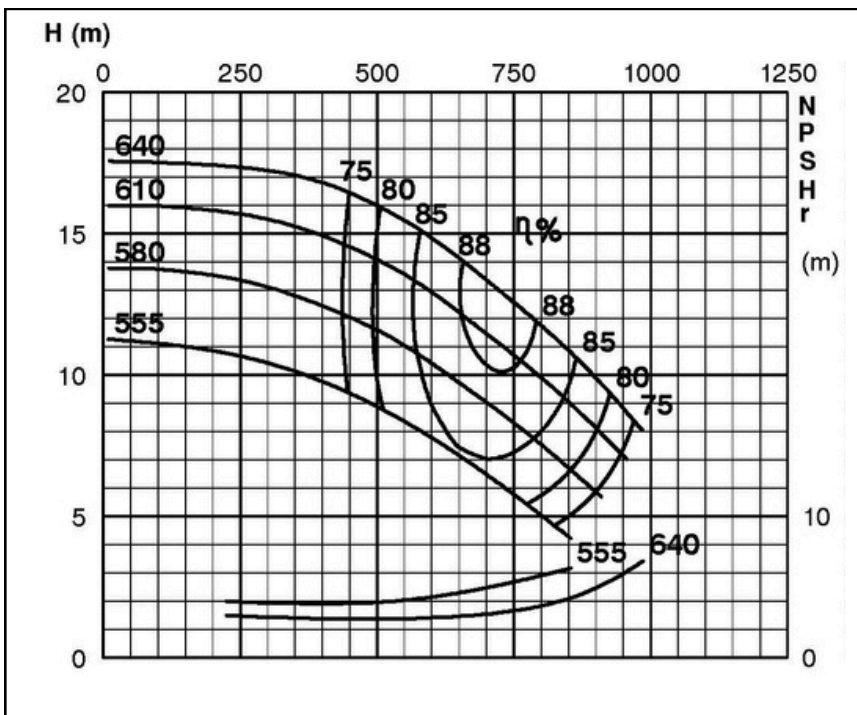
## TECHNICAL SPECIFICATIONS



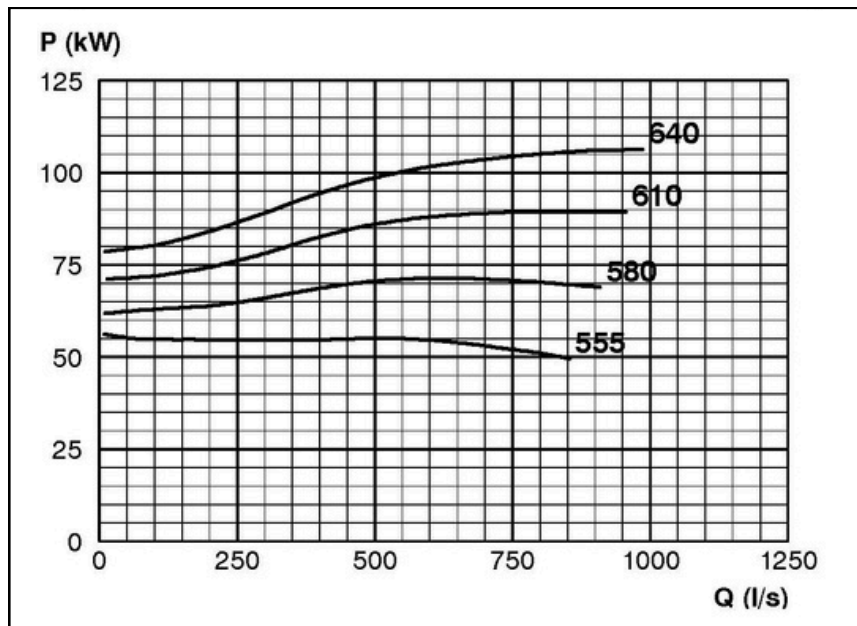
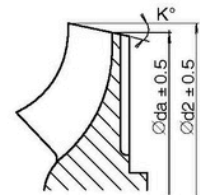
### ISP Process Pumps - ISP600-700 (600-600-700) ISP Impeller 289002 OPEN B121 Z6

#### Performance Curve - ISP600-700-O-590

590 rpm



IMPELLER DIA		
∅d <sub>2</sub> (mm)	K°	∅d <sub>a</sub> (mm)
640	15	577.5
635	15	572.0
630	15	566.5
625	15	561.0
620	15	555.4
615	16	545.6
610	16	540.0
605	16	534.3
600	17	524.3
595	17	518.5
590	18	508.4
585	18	502.5
580	19	492.2
575	19	486.2
570	20	475.7
565	21	465.1
560	22	454.4
555	23	443.2



RET13957