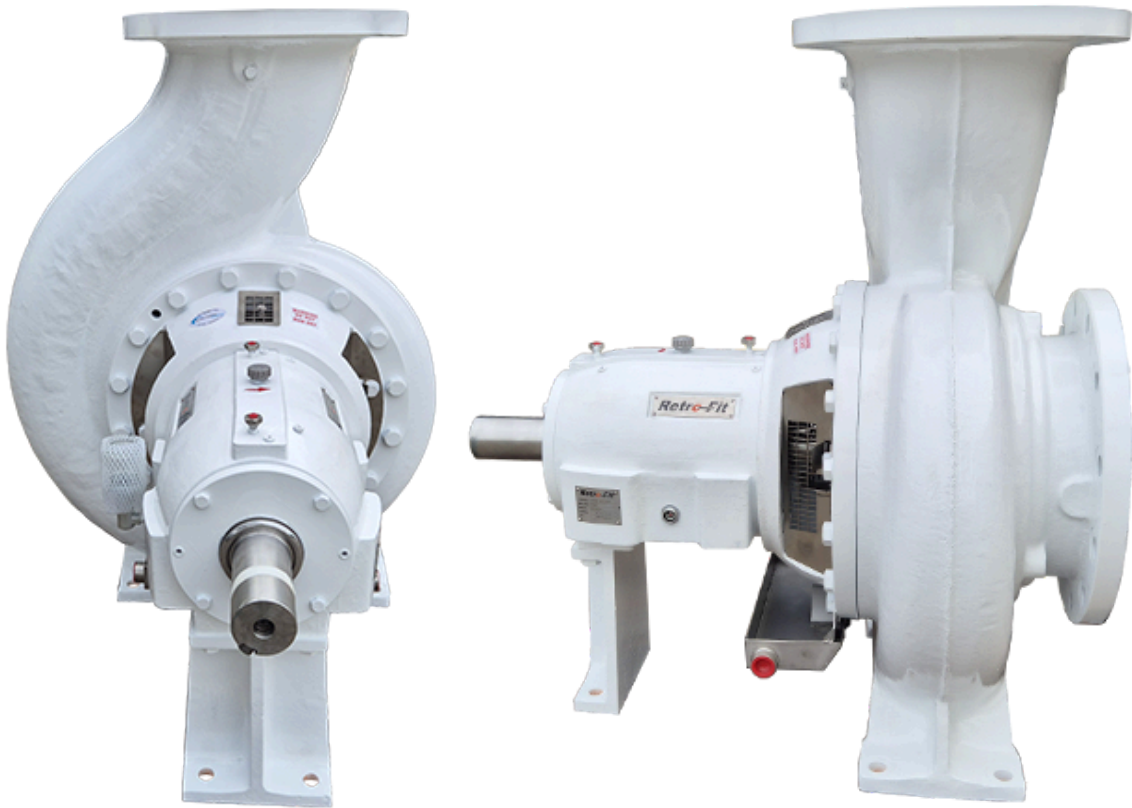


# TECHNICAL DATA SHEETS

## *Air Separation Version (ISRP) 750 Pump Curve Booklet*



## TECHNICAL SPECIFICATIONS

### ISP Process Pumps - ISP100-400 (125-100-400)



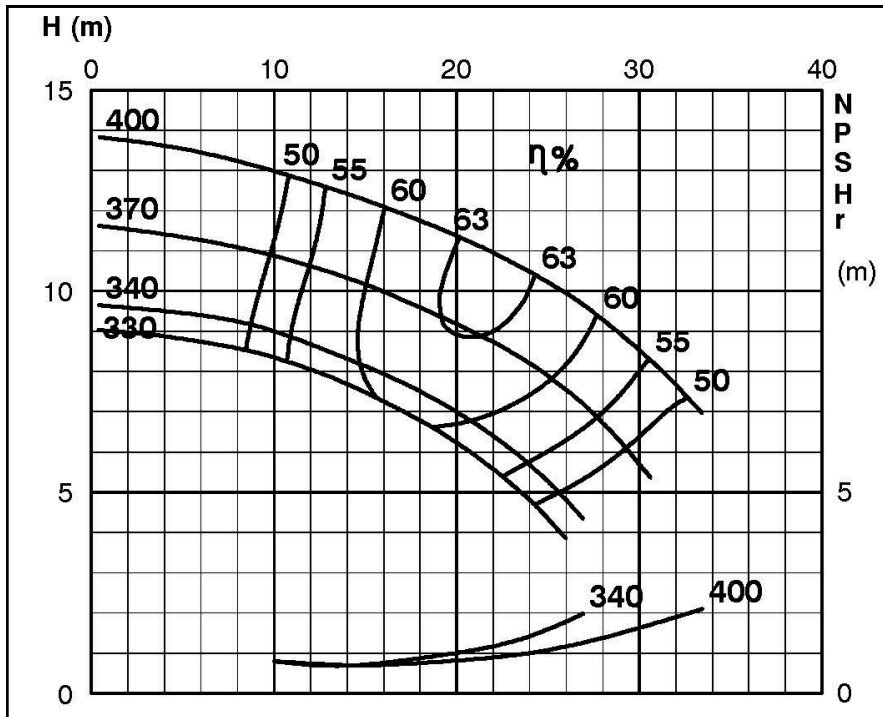
### ISP Impeller 283882 OPEN B18 Z4

ISRP: Impeller 285263 OPEN B18 Z4, please add the power demand of the degassing unit = 0.3 kW

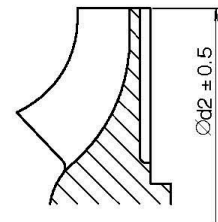
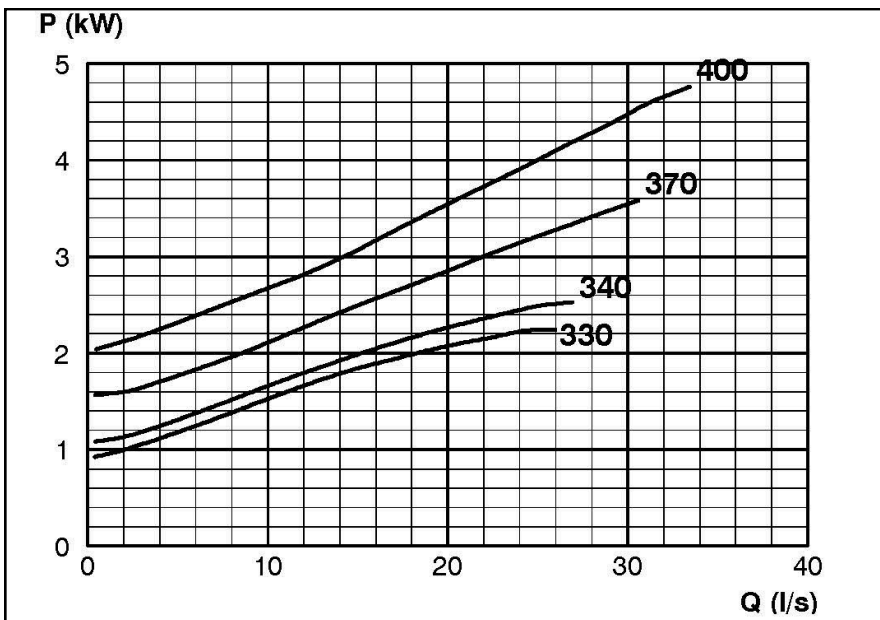
ISSP: Impeller 285263 OPEN B18 Z4, please add the power demand of the degassing unit = 1.0 kW

#### Performance Curve - ISP100-400-O-710

710 rpm



IMPELLER DIA
Ød <sub>2</sub> (mm)
400
395
390
385
380
375
370
365
360
355
350
345
340
335
330



RET13919

## TECHNICAL SPECIFICATIONS



### ISP Process Pumps - ISP125-400 (150-125-400)

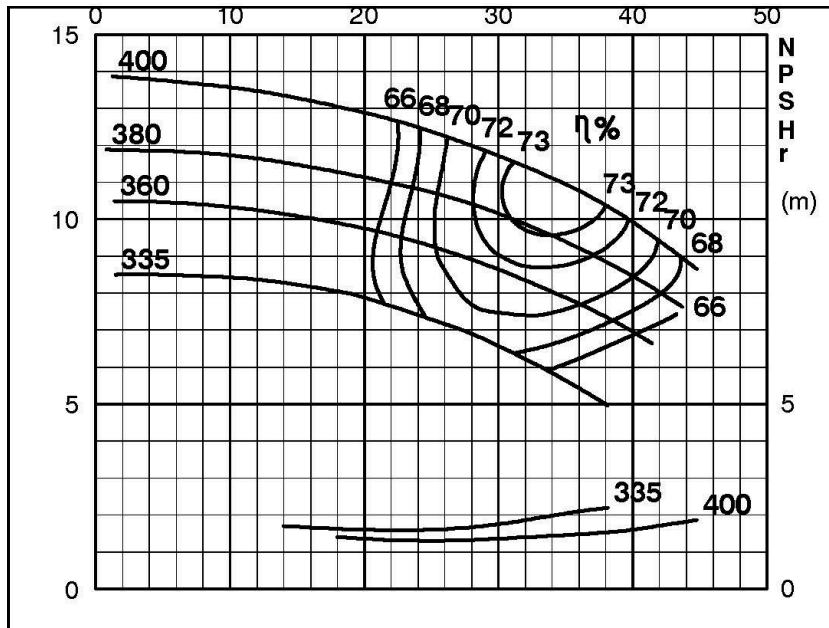
### ISP Impeller 283883 OPEN B29 Z4

ISRP: Impeller 285264 OPEN B29 Z4, please add the power demand of the degassing unit = 0.3 kW

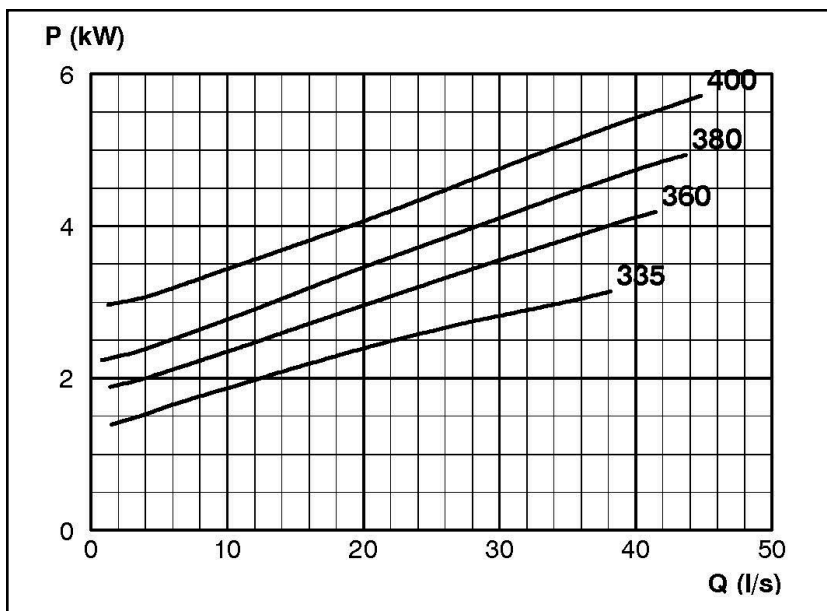
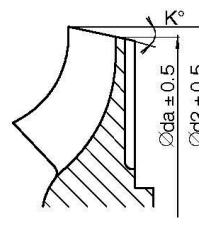
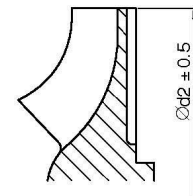
ISSP: Impeller 285264 OPEN B29 Z4, please add the power demand of the degassing unit = 1.0 kW

#### Performance Curve - ISP125-400-O-720

720 rpm



IMPELLER DIA		
∅d <sub>2</sub> (mm)	K°	∅d <sub>a</sub> (mm)
400		
395		
390	1	389
385	2	382.5
380	3	375
375	3	372
370	4	366
365	4	361
360	5	354
355	6	348
350	8	341
345	9	334.5
340	10	329
335	11	322.5



## TECHNICAL SPECIFICATIONS



### ISP Process Pumps - ISP250-315 (300-250-315)

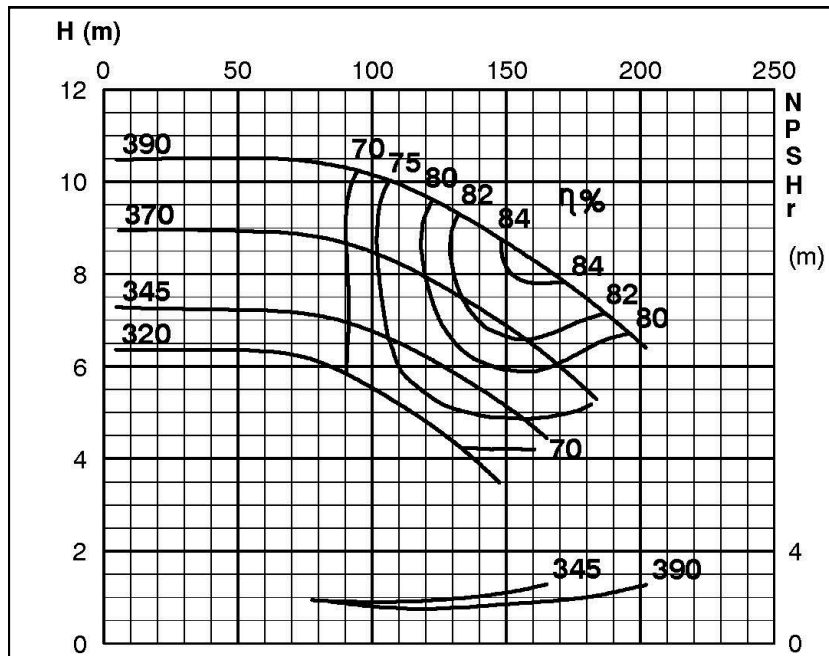
#### ISP Impeller 283888 OPEN B64 Z5

ARP: Impeller 285269 OPEN B64 Z5, Please add the power demand of the degassing unit = 1.3 kW

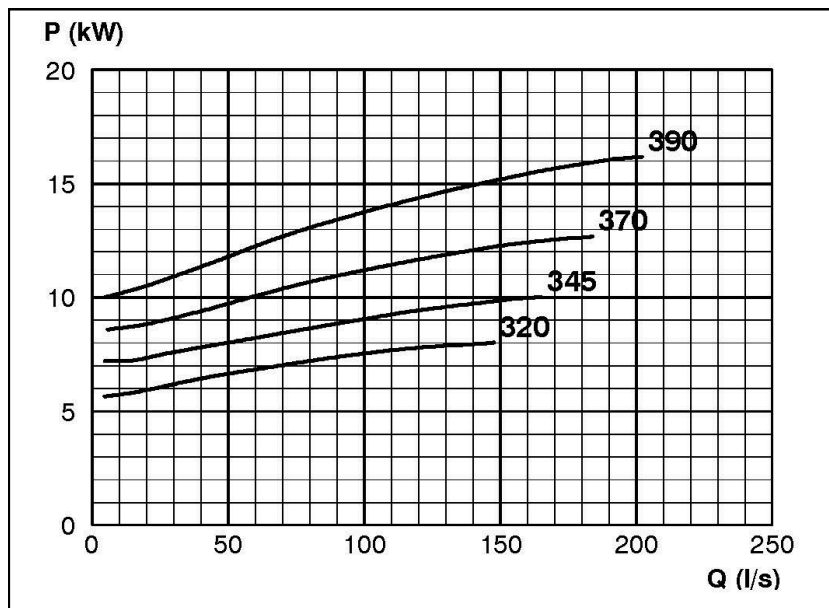
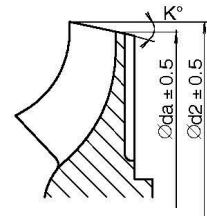
ASP: Impeller 285269 OPEN B64 Z5, Please add the power demand of the degassing unit = 0.3 kW

#### Performance Curve - ISP250-315-O-730

730 rpm



IMPELLER DIA		
∅d <sub>2</sub> (mm)	K°	∅d <sub>1</sub> (mm)
390	9	370.0
385	9	364.8
380	10	357.3
375	10	352.1
370	11	344.4
365	11	339.0
360	12	331.3
355	13	323.5
350	14	315.6
345	15	307.7
340	16	299.8
335	17	291.4
330	18	283.0
325	19	274.5
320	20	266.0



RET13921

## TECHNICAL SPECIFICATIONS



### ISP Process Pumps - ISP300-315 (350-300-315)

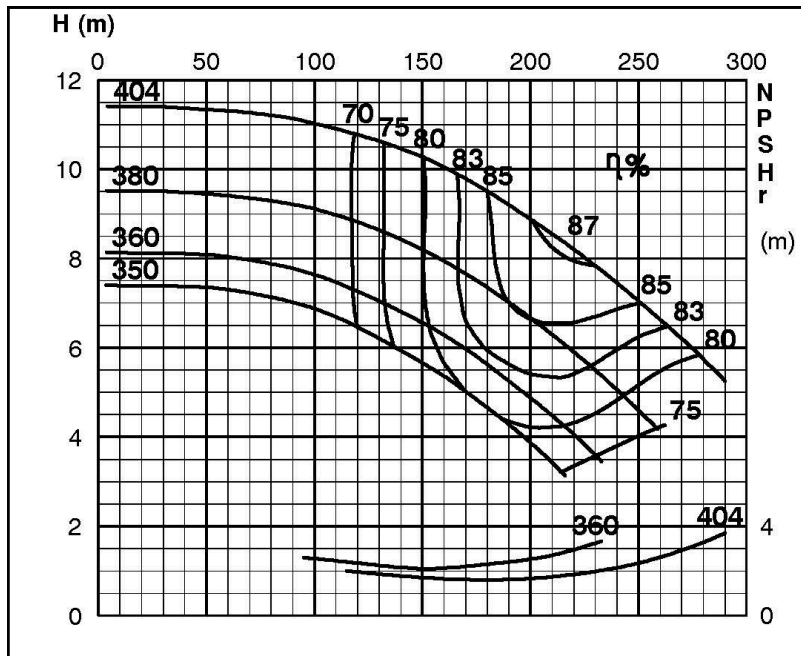
### ISP Impeller 283889 OPEN B72 Z6

ISRP: Impeller 285270 OPEN B72 Z6, please add the power demand of the degassing unit = 3.3 kW

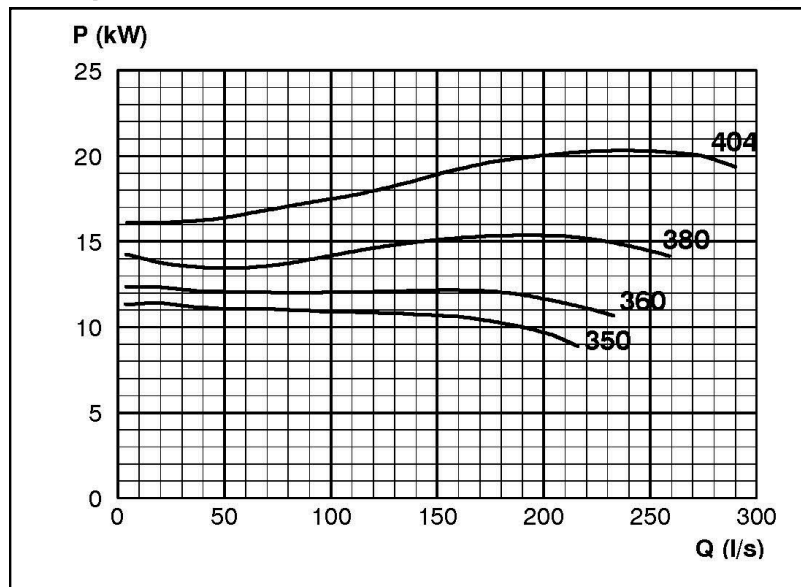
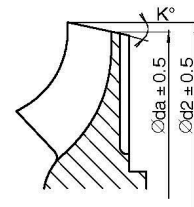
ISSP: Impeller 285270 OPEN B72 Z6, please add the power demand of the degassing unit = 1.2 kW

#### Performance Curve - ISP300-315-O-730

730 rpm



IMPELLER DIA		
∅d <sub>2</sub> (mm)	K°	∅d <sub>a</sub> (mm)
404	13	371.7
400	13	367.2
395	14	359.2
390	14	354.0
385	15	346.2
380	16	338.1
375	17	330.0
370	18	321.8
365	19	313.6
360	20	304.9
355	22	293.6
350	24	282.1



RET13922

# Retro-Fit

Pumps

## TECHNICAL SPECIFICATIONS



### ISP Process Pumps - ISP150-400 (200-150-400)

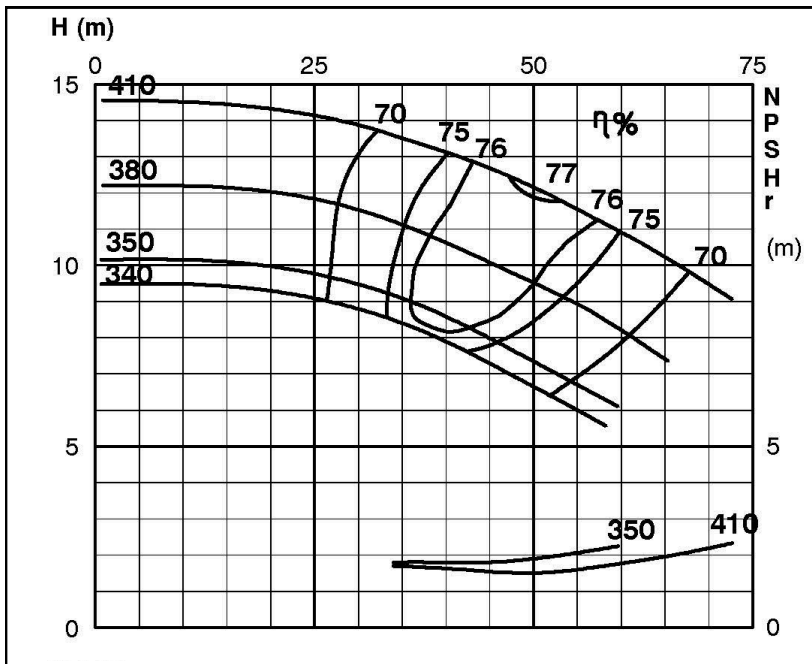
#### ISP Impeller 283890 OPEN B26 Z5

ISRP: Impeller 285271 OPEN B26 Z5, Please add the power demand of the degassing unit = 0.3 kW

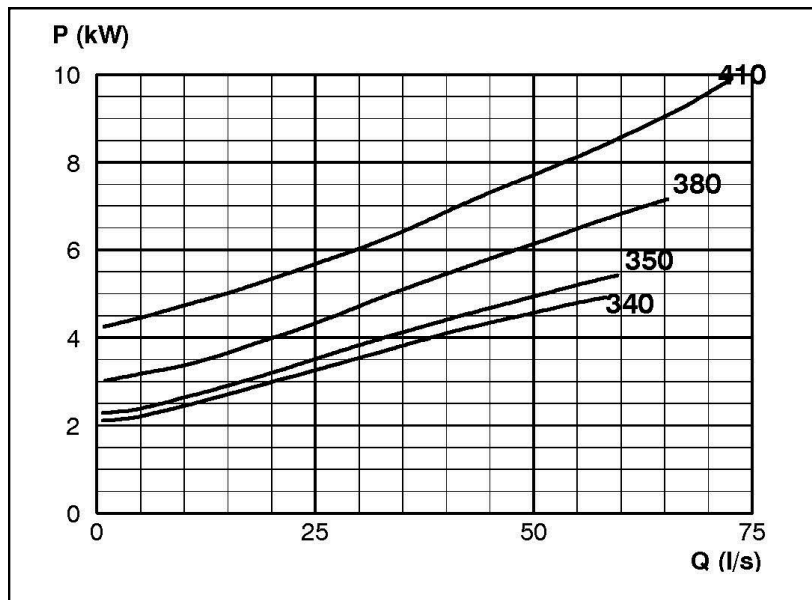
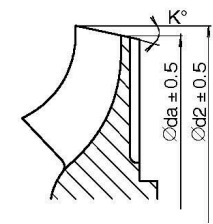
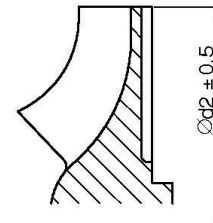
ISSP: Impeller 285271 OPEN B26 Z5, Please add the power demand of the degassing unit = 1.2 kW

#### Performance Curve - ISP150-400-O-730

730 rpm



IMPELLER DIA		
∅d <sub>2</sub> (mm)	K°	∅d <sub>a</sub> (mm)
410		
405		
400		
395		
390		
385		
380	1	379
375	2	373
370	3	367
365	4	361
360	5	355
355	6	349
350	7	343
345	7	338
340	8	332



RET13923

## TECHNICAL SPECIFICATIONS



### ISP Process Pumps - ISP200-400 (250-200-400)

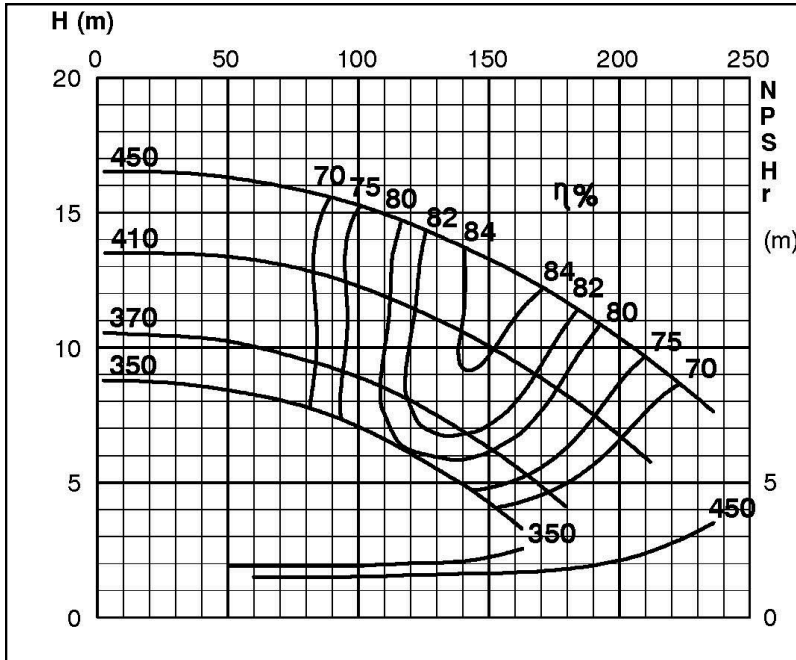
#### ISP Impeller 283891 OPEN B46 Z5

ISRP: Impeller 285272 OPEN B46 Z5, please add the power demand of the degassing unit = 0.3 kW

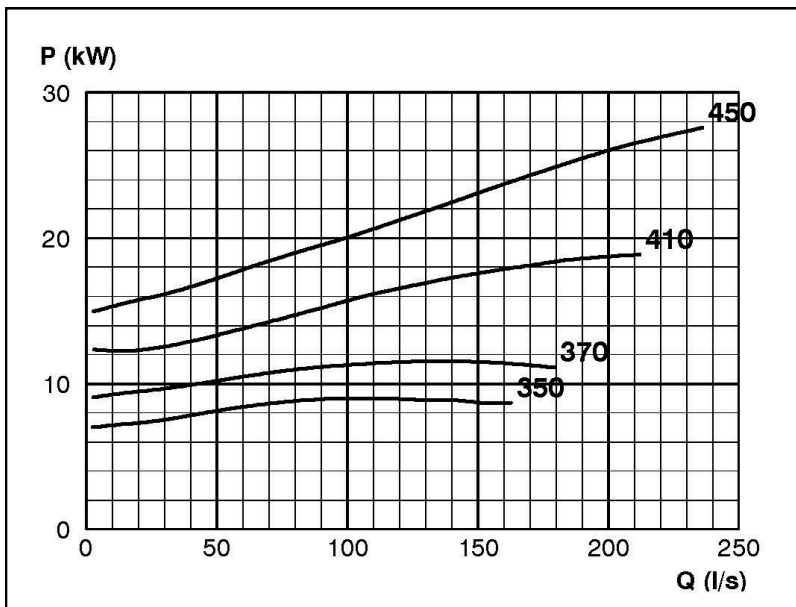
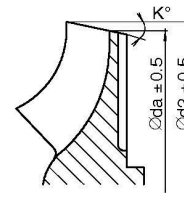
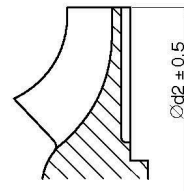
ISSP: Impeller 285272 OPEN B46 Z5, please add the power demand of the degassing unit = 1.2 kW

#### Performance Curve - ISP200-400-O-730

730 rpm



IMPELLER DIA		
∅d <sub>2</sub> (mm)	K°	∅da (mm)
450		
445		
440		
435		
430		
425		
420		
415		
410		
405		
400		
395		
390	2	385.9
385	2	380.9
380	3	373.8
375	4	366.5
370	5	359.3
365	6	352.1
360	7	344.8
355	8	337.3
350	9	329.7



RET13924

## TECHNICAL SPECIFICATIONS



### ISP Process Pumps - ISP250-400 (300-250-400)

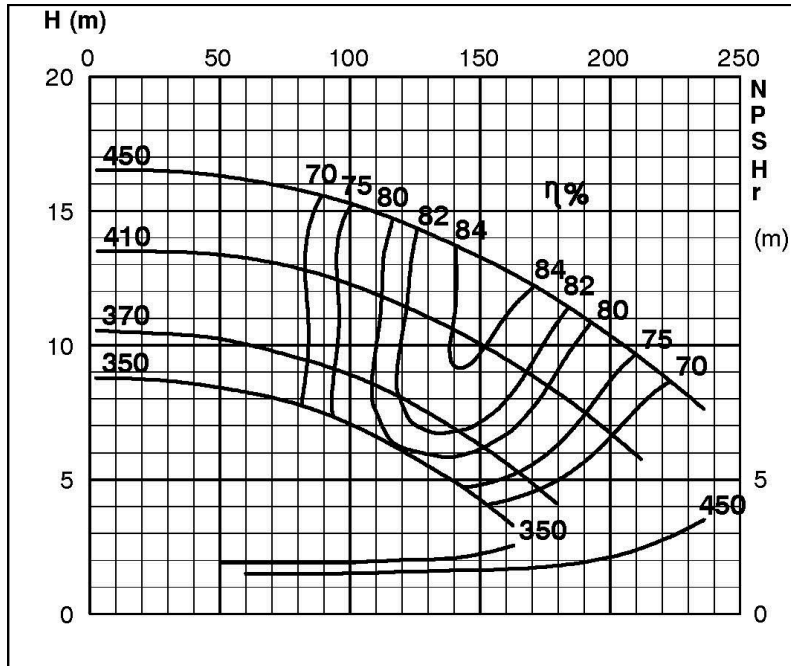
#### ISP Impeller 283892 OPEN B55 Z5

ISRP: Impeller 285273 OPEN B55 Z5, please add the power demand of the degassing unit = 0.7 kW

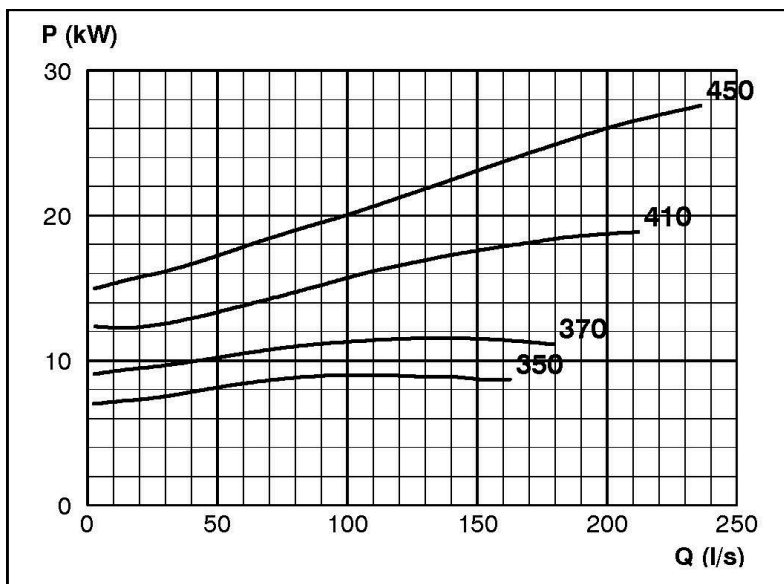
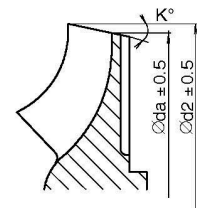
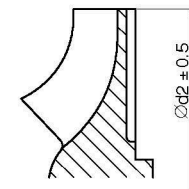
ISSP: Impeller 285273 OPEN B55 Z5, please add the power demand of the degassing unit = 2.0 kW

#### Performance Curve - ISP250-400-O-730

730 rpm



IMPELLER DIA		
∅d <sub>2</sub> (mm)	K°	∅da (mm)
450		
445		
440		
435		
430		
425		
420		
415		
410		
405		
400		
395		
390	2	385.9
385	2	380.9
380	3	373.8
375	4	366.5
370	5	359.3
365	6	352.1
360	7	344.8
355	8	337.3
350	9	329.7



RET13925

# Retroc-Fit

Pumps

## TECHNICAL SPECIFICATIONS



### ISP Process Pumps - ISP300-400 (350-300-400)

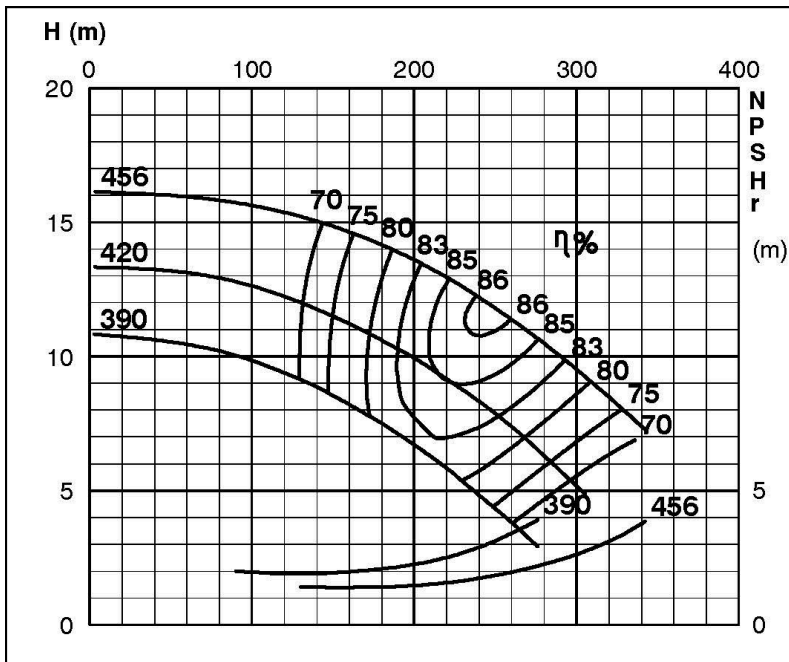
### ISP Impeller 283893 OPEN B69 Z6

ISRP: Impeller 285274 OPEN B69 Z6, Please add the power demand of the degassing unit = 0.7 kW

ISSP: Impeller 285274 OPEN B69 Z6, Please add the power demand of the degassing unit = 2.0 kW

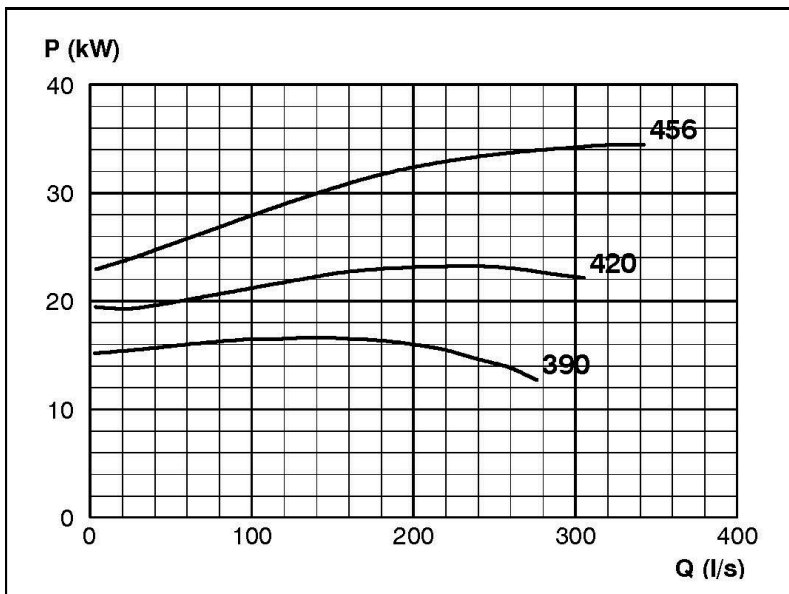
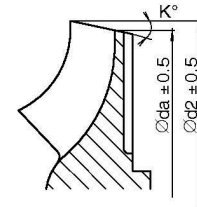
#### Performance Curve - ISP300-400-O-730

730 rpm



IMPELLER DIA		
∅d <sub>2</sub> (mm)	K°	∅da (mm)
456	8	436.8
450	8	430.7
445	9	423.1
440	10	415.5
435	10	410.3
430	11	402.6
425	11	397.2
420	12	389.4
415	12	384.0
410	13	376.1
405	14	367.9
400	15	359.8
395	16	351.7
390	17	343.2

1)



RET13926

# Retro-Fit

Pumps

## TECHNICAL SPECIFICATIONS



### ISP Process Pumps - ISP350-500 (400-350-500)

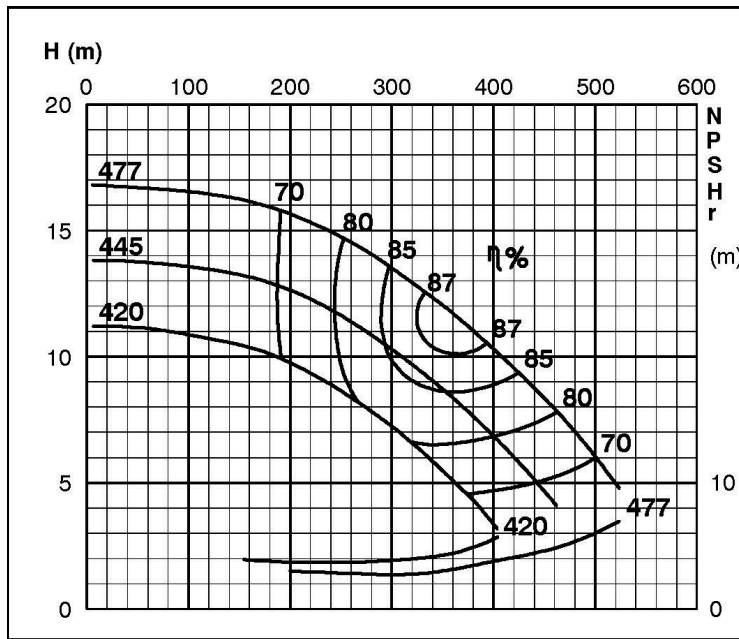
### ISP Impeller 283894 OPEN B85 Z6

ARP: Impeller 285275 OPEN B85 Z6, please add the power demand of the degassing unit = 1.3 kW

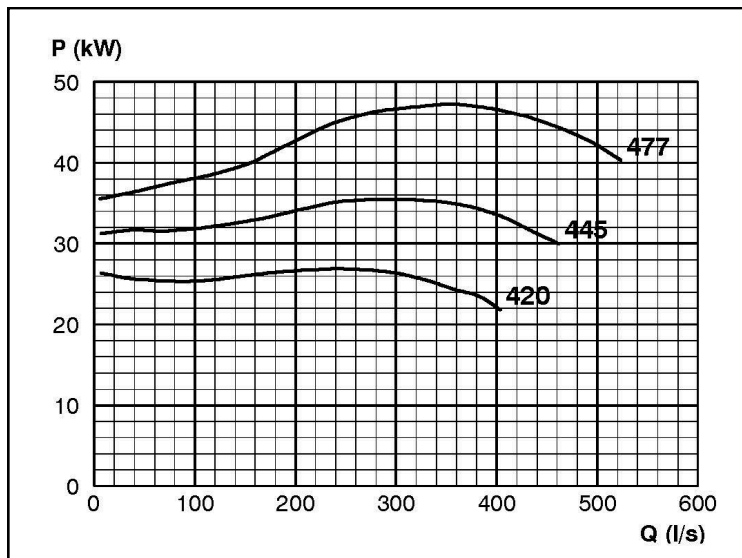
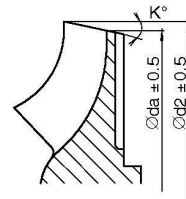
ASP: Impeller 285275 OPEN B85 Z6, please add the power demand of the degassing unit = 2.0 kW

#### Performance Curve - ISP350-500-O-740

740 rpm



IMPELLER DIA		
∅d <sub>2</sub> (mm)	K°	∅da (mm)
477	13	438.7
475	13	436.4
470	13	431.2
465	13	426.0
460	13	420.5
455	14	411.9
450	14	406.9
445	15	398.1
440	16	389.3
435	17	380.3
430	18	371.2
425	19	362.0
420	20	353.0



RET13927

## TECHNICAL SPECIFICATIONS



### ISP Process Pumps - ISP400-500 (400-400-500)

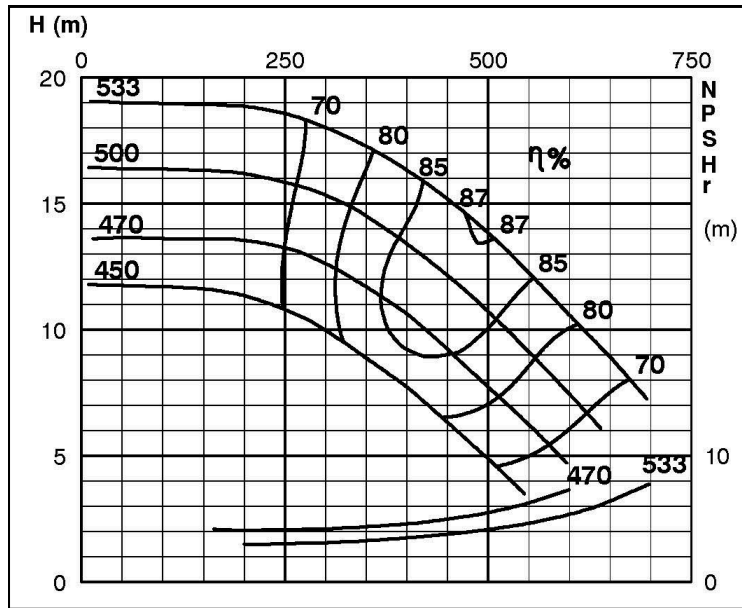
### ISP Impeller 283895 OPEN B95 Z6

ISRP: Impeller 285276 OPEN B95 Z6, please add the power demand of the degassing unit = 1.3 kW

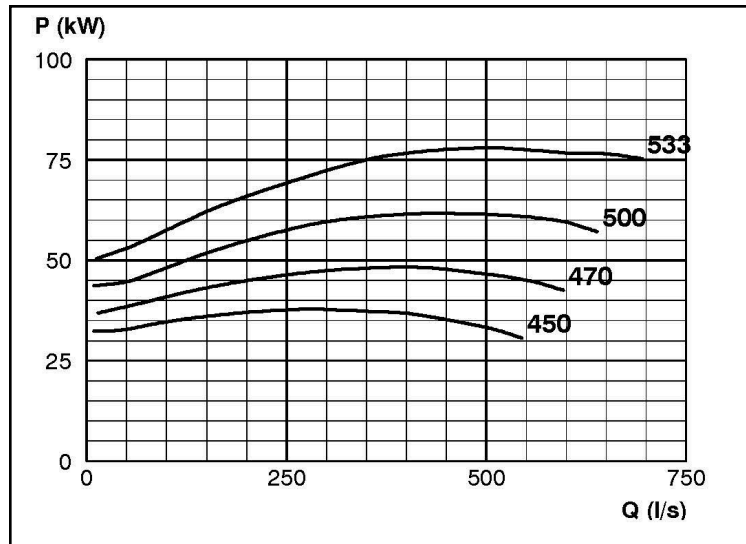
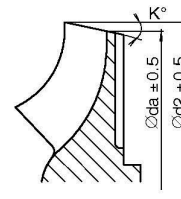
ISPP: Impeller 285276 OPEN B95 Z6, please add the power demand of the degassing unit = 2.0 kW

#### Performance Curve - ISP400-500-O-740

740 rpm



IMPELLER DIA		
∅d <sub>2</sub> (mm)	K°	∅da (mm)
533	13	490.5
530	13	487.5
525	13	482.1
520	13	476.6
515	13	471.4
510	13	465.9
505	13	460.4
500	13	454.7
495	14	445.6
490	14	439.9
485	15	430.9
480	15	425.1
475	16	415.6
470	17	406.1
465	18	396.0
460	19	386.0
455	21	375.0
450	22	362.0



## TECHNICAL SPECIFICATIONS



### ISP Process Pumps - ISP100-500 (200-100-500)

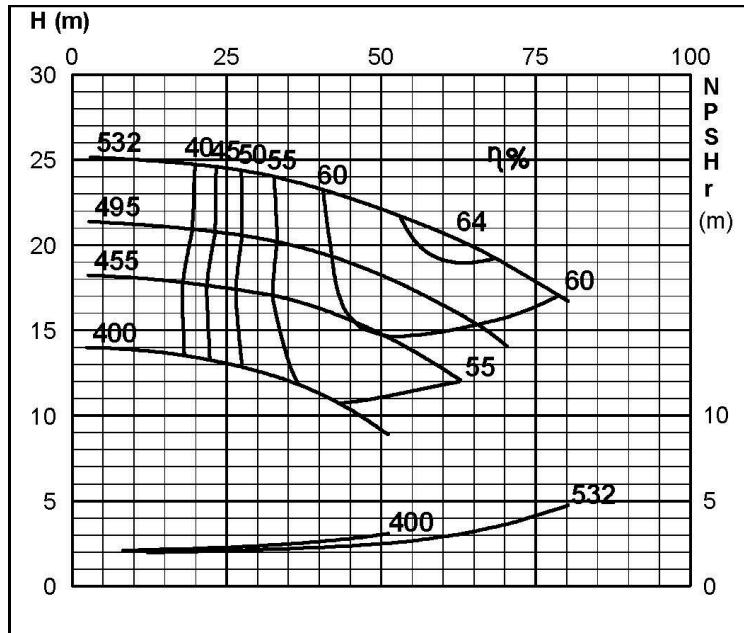
#### ISP Impeller 285944 OPEN B24 Z4

ARP: Impeller 286058 OPEN B24 Z4, please add the power demand of the degassing unit = 0.7 kW

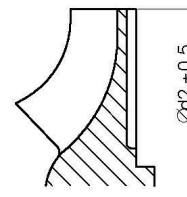
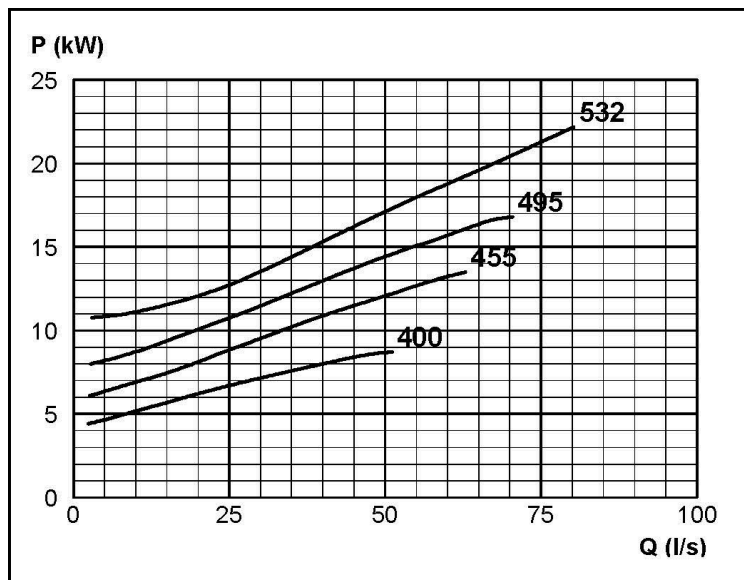
ASP: Impeller 286058 OPEN B24 Z4, please add the power demand of the degassing unit = 2.0 kW

#### Performance Curve - ISP100-500-O-730

730 rpm



IMPELLER DIA
∅d <sub>2</sub> (mm)
532
525
520
515
510
505
500
495
490
485
480
475
470
465
460
455
450
445
440
435
430
425
420
415
410
405
400



RET13929

## TECHNICAL SPECIFICATIONS



### ISP Process Pumps - ISP150-500 (250-150-500)

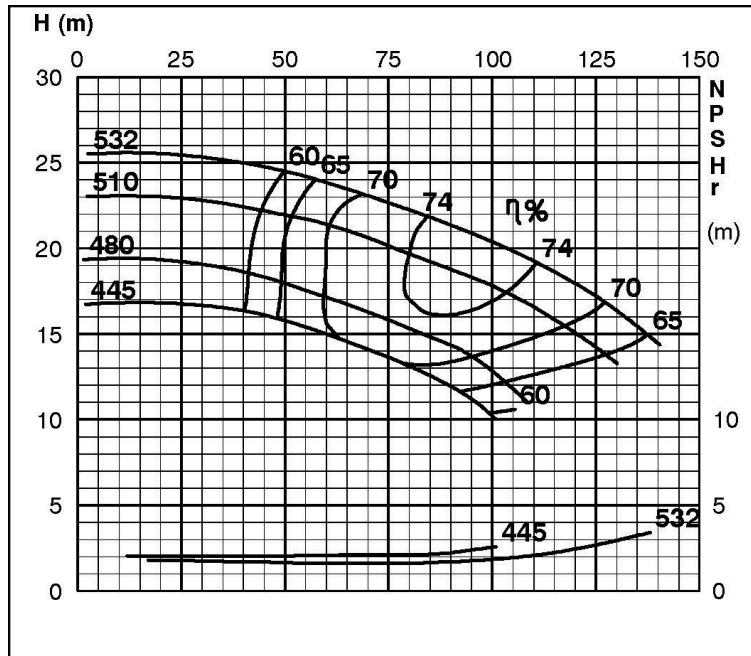
#### ISP Impeller 283896 OPEN B40 Z4

ARP: Impeller 285277 OPEN B40 Z4, please add the power demand of the degassing unit = 0.7 kW

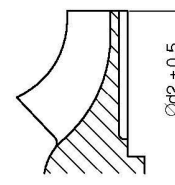
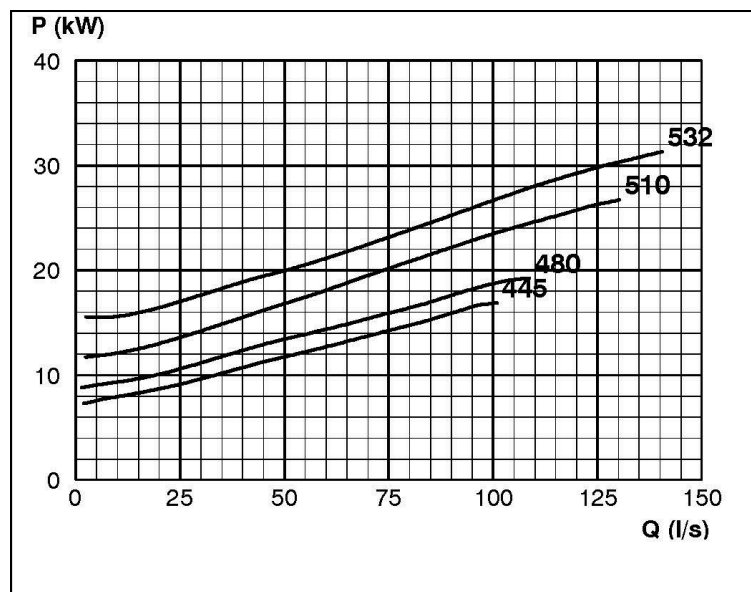
ASP: Impeller 285277 OPEN B40 Z4, please add the power demand of the degassing unit = 2.0 kW

#### Performance Curve - ISP150-500-O-740

740 rpm



IMPELLER DIA
∅d <sub>2</sub> (mm)
532
525
520
515
510
505
500
495
490
485
480
475
470
465
460
455
450
445



RET13930

## TECHNICAL SPECIFICATIONS



### ISP Process Pumps - ISP200-500 (250-200-500)

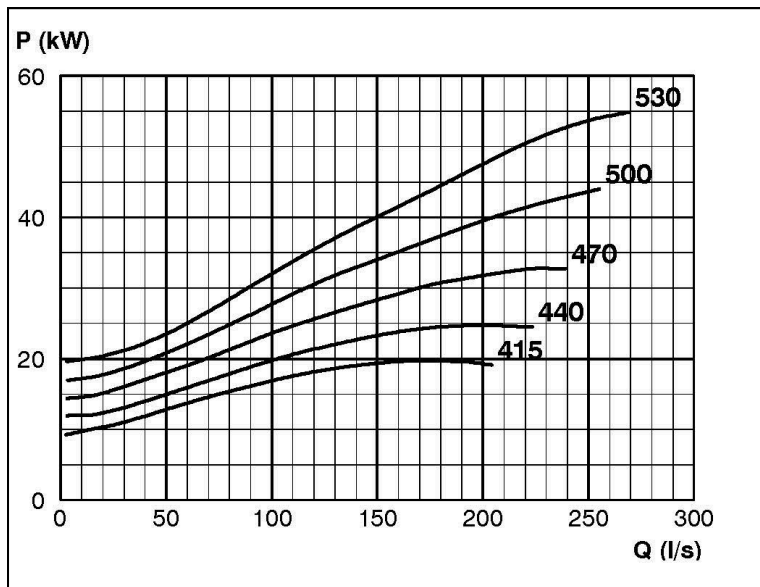
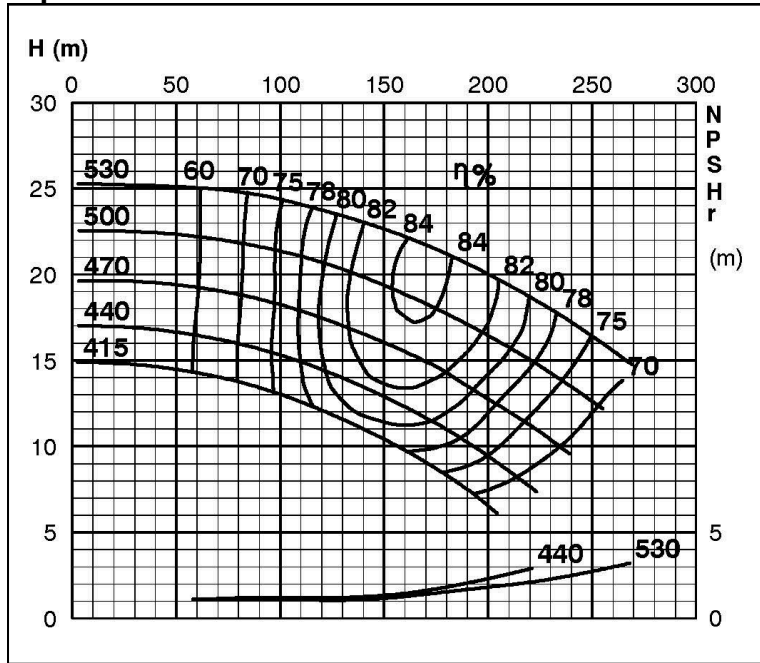
#### ISP Impeller 283897 OPEN B35 Z5

ISRP: Impeller 285278 OPEN B35 Z5, please add the power demand of the degassing unit = 0.7 kW

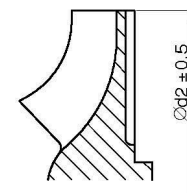
ISSP: Impeller 285278 OPEN B35 Z5, please add the power demand of the degassing unit = 2.0 kW

#### Performance Curve - ISP200-500-O-740

740 rpm



IMPELLER DIA
∅d <sub>2</sub> (mm)
530
525
520
515
510
505
500
495
490
485
480
475
470
465
460
455
450
445
440
435
430
425
420
415



RET13931

## TECHNICAL SPECIFICATIONS



### ISP Process Pumps - ISP250-500 (300-250-500)

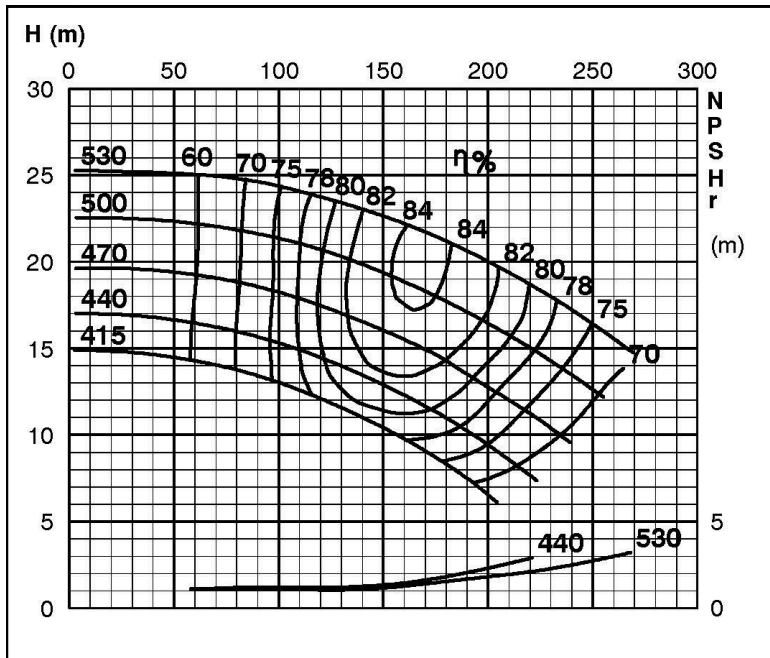
#### ISP Impeller 287904 OPEN B30 Z5

ARP: Impeller 285279 OPEN B49 Z5, please add the power demand of the degassing unit = 0.7 kW

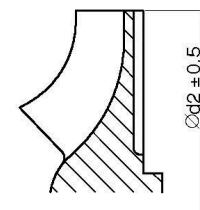
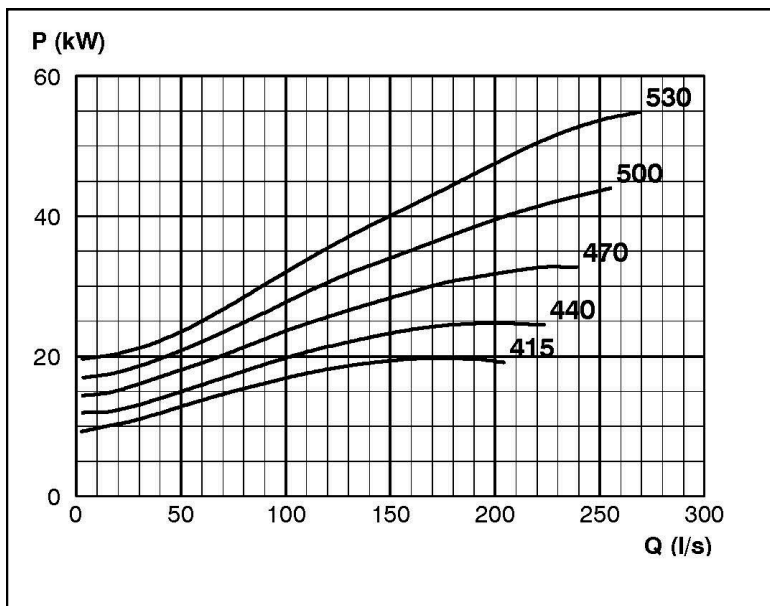
ASP: Impeller 285279 OPEN B49 Z5, please add the power demand of the degassing unit = 2.0 kW

#### Performance Curve - ISP250-500-O-740

740 rpm



IMPELLER DIA
∅d <sub>2</sub> (mm)
530
525
520
515
510
505
500
495
490
485
480
475
470
465
460
455
450
445
440
435
430
425
420
415



RET13932

Exclusively Distributed by

# Retro-Fit

Pumps

## TECHNICAL SPECIFICATIONS



ISP Process Pumps - ISP300-500 (350-300-500)

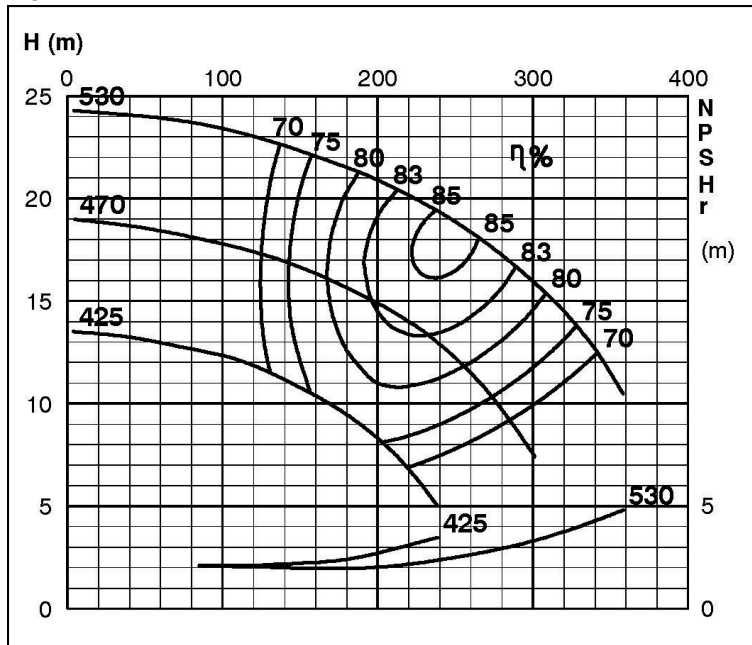
ISP Impeller 283899 OPEN B64 Z5

ARP: Impeller 285280 OPEN B64 Z5, please add the power demand of the degassing unit = 0.7 kW

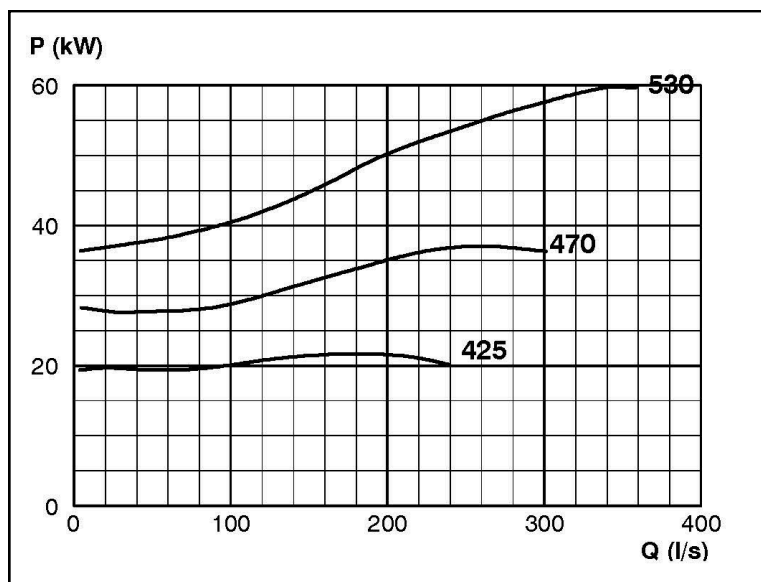
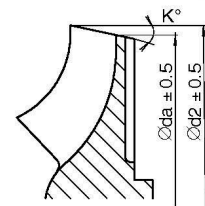
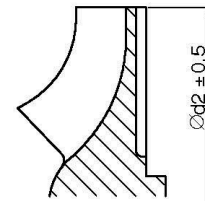
ASP: Impeller 285280 OPEN B64 Z5, please add the power demand of the degassing unit = 2.0 kW

### Performance Curve - ISP300-500-O-740

740 rpm



IMPELLER DIA		
∅d <sub>2</sub> (mm)	K°	∅d <sub>1</sub> (mm)
530		
525		
520		
515		
510		
505		
500		
495		
490		
485		
480		
475		
470		
465	1	462.6
460	2	455.1
455	3	447.6
450	4	440.0
445	5	432.4
440	6	424.7
435	7	417.0
430	8	409.1
425	10	398.6



RET13933

# Retro-Fit

Pumps

## TECHNICAL SPECIFICATIONS



### ISP Process Pumps - ISP400-600 (500-400-600)

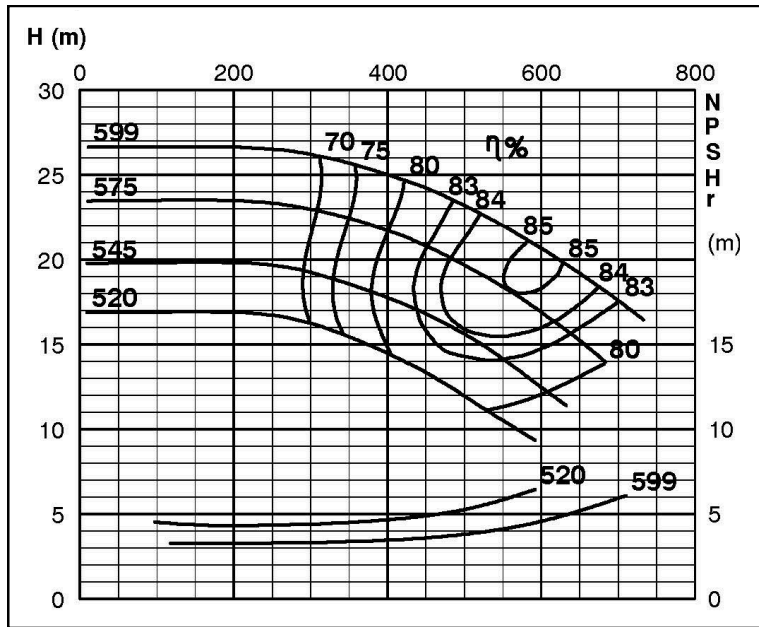
#### ISP Impeller 283899 OPEN B64 Z5

ARP: Impeller 285281 OPEN B93 Z6, please add the power demand of the degassing unit = 1.3 kW

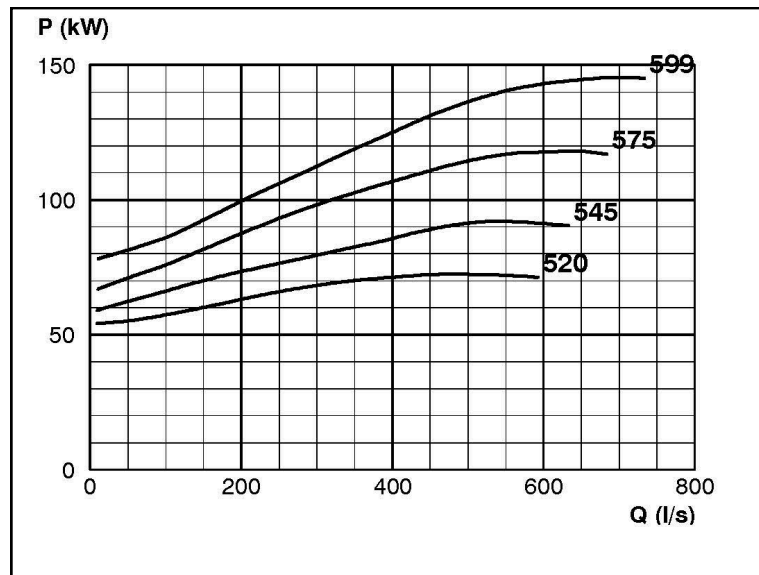
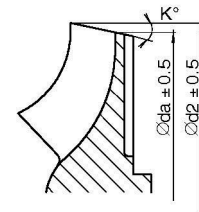
ASP: Impeller 285281 OPEN B93 Z6, please add the power demand of the degassing unit = 2.0 kW

#### Performance Curve - ISP400-600-O-740

740 rpm



IMPELLER DIA		
∅d <sub>2</sub> (mm)	K°	∅d <sub>1</sub> (mm)
599	7	576.4
595	7	572.2
590	8	563.8
585	8	558.7
580	9	550.3
575	9	545.1
570	10	536.7
565	10	531.3
560	11	522.8
555	11	517.4
550	13	505.2
545	13	500.0
540	14	491.1
535	14	485.6
530	15	476.7
525	16	467.7
520	17	458.6



RET13934

# Retro-Fit

Pumps

## TECHNICAL SPECIFICATIONS



### ISP Process Pumps - ISP500-600 (500-500-600)

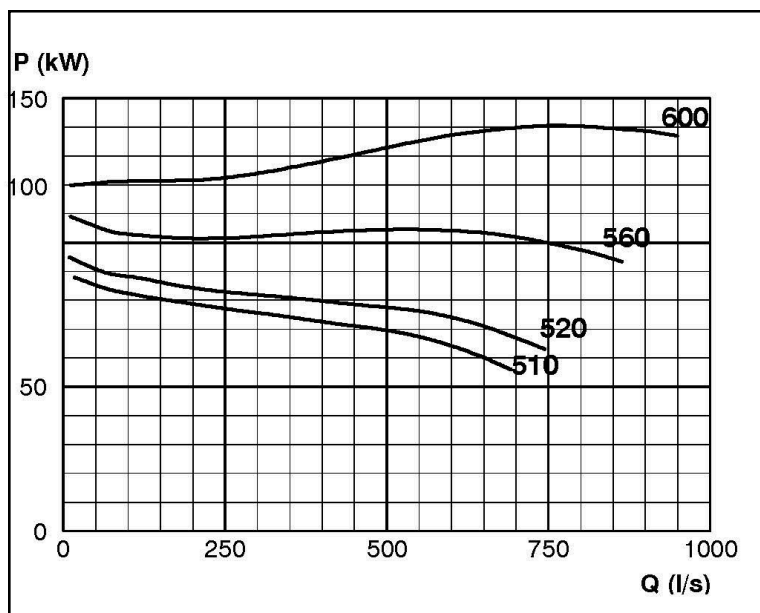
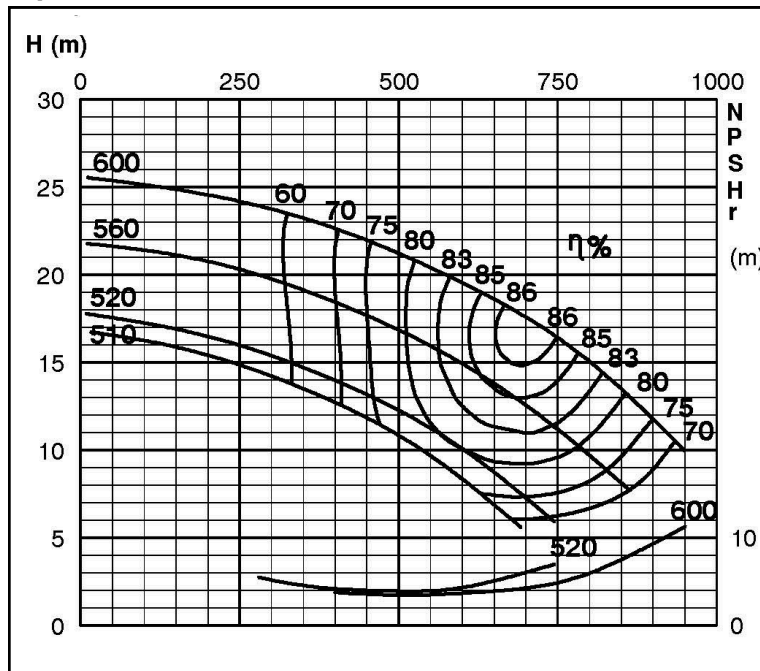
#### ISP Impeller 283901 OPEN B114 Z6

ISRP: Impeller 285282 OPEN B114 Z6, please add the power demand of the degassing unit = 1.3 kW

ISSP: Impeller 285282 OPEN B114 Z6, please add the power demand of the degassing unit = 2.0 kW

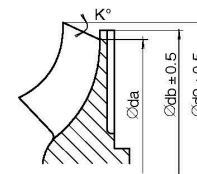
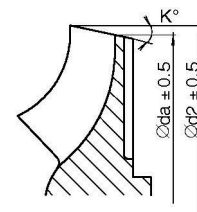
#### Performance Curve - ISP500-600-O-740

740 rpm



IMPELLER DIA			
$\odot d_2$ (mm)	K°	$\odot d_a$ (mm)	$\odot d_b$ (mm)
600	15	541.2	
595	15	535.7	
590	15	530.2	
585	15	524.7	
580	15	519.2	
575	16	509.7	
570	16	503.8	
565	16	498.3	
560	17	488.7	
555	17	482.5	
550	18	427.7	
545	18	466.8	
540	19	456.7	
535	19	450.7	
530	20	440.4	
525	20	434.0	
520	21	423.0	430 (*)
515	22	413.0	430 (*)
510	23	400.0	430 (*)

\*) Only for ARP/ASP



RET13935

# Retro-Fit

Pumps

## TECHNICAL SPECIFICATIONS



### ISP Process Pumps - ISP100-600 (200-100-600)

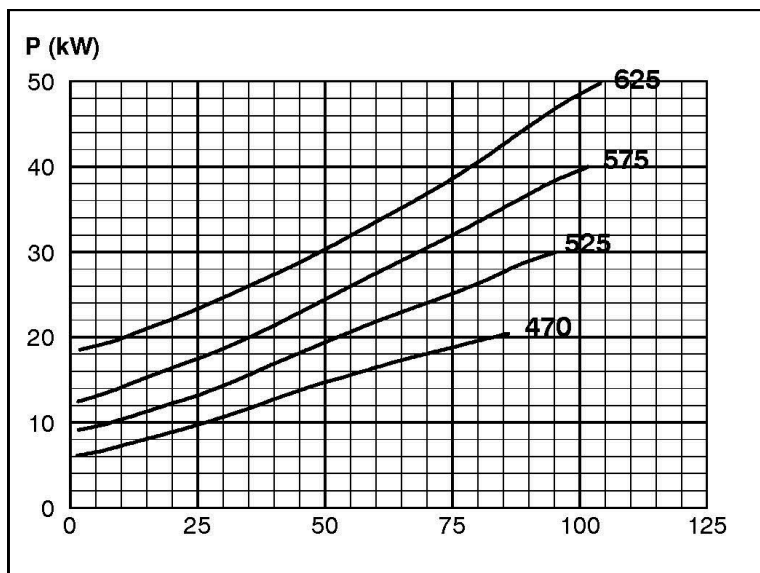
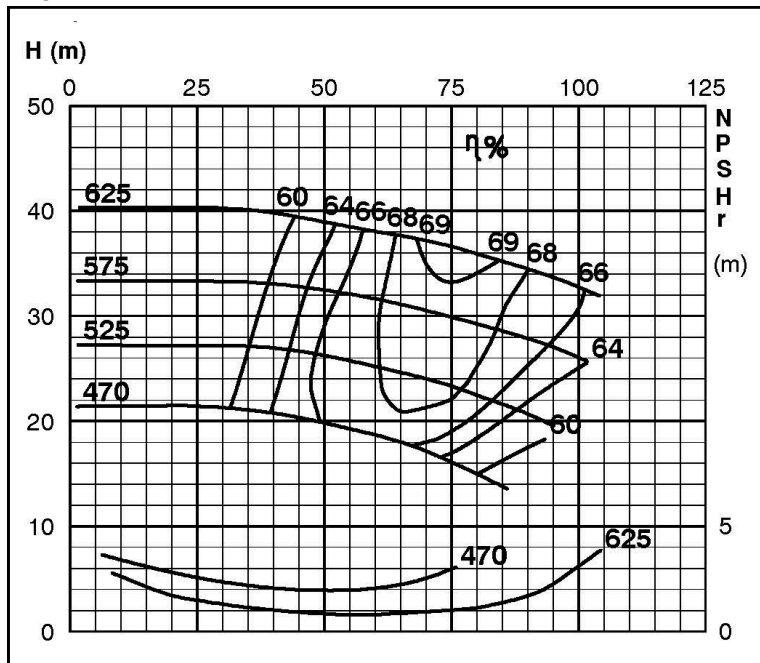
#### ISP Impeller 287904 OPEN B30 Z5

ARP: Impeller 288036 OPEN B30 Z5, please add the power demand of the degassing unit = 1.3 kW

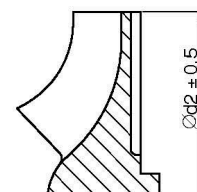
ASP: Impeller 288036 OPEN B30 Z5, please add the power demand of the degassing unit = 2.0 kW

#### Performance Curve - ISP100-600-O-740

740 rpm



IMPELLER DIA
Ød <sub>2</sub> (mm)
625
620
615
610
605
600
595
590
585
580
575
570
565
560
555
550
545
540
535
530
525
520
515
510
505
500
495
490
485
480
475
470



RET13936

# Retro-Fit

Pumps

## TECHNICAL SPECIFICATIONS



ISP Process Pumps - ISP200-600 (300-200-600)

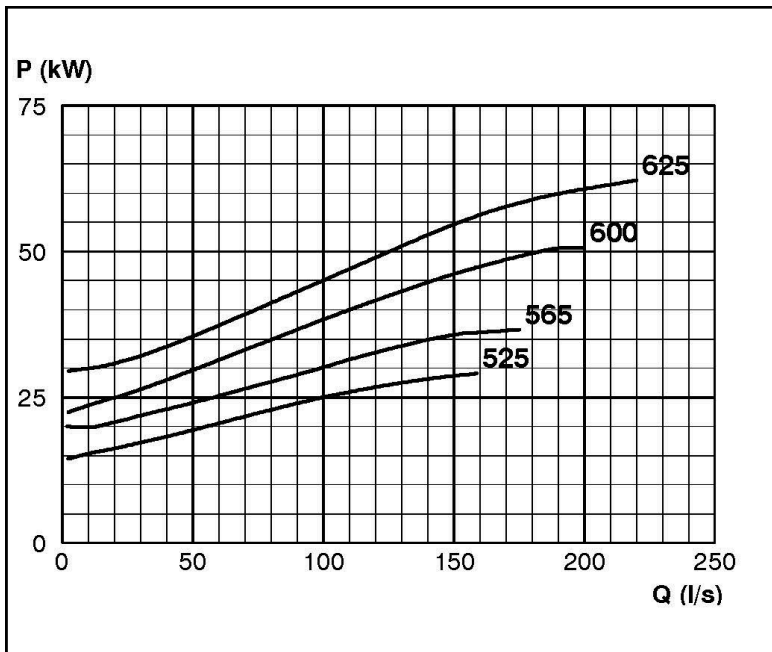
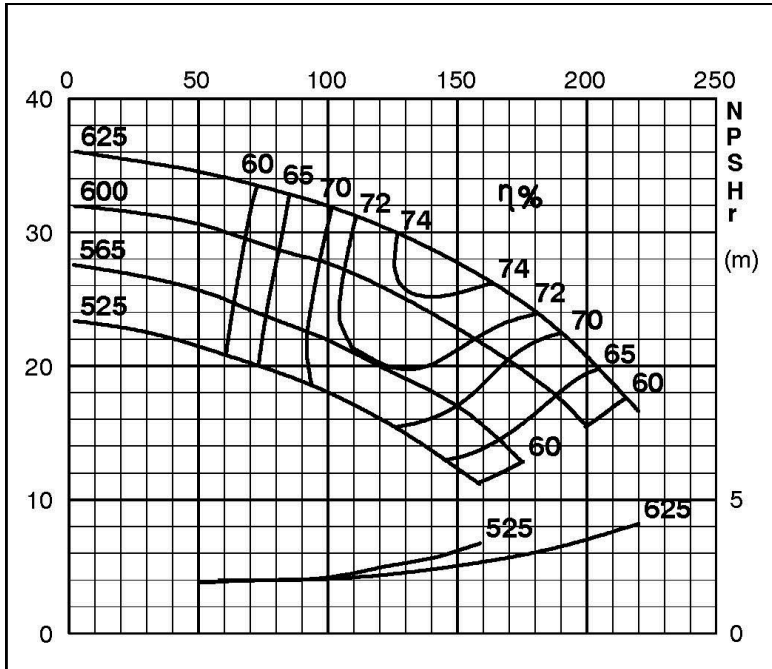
ISP Impeller 283938 OPEN B46 Z4

ISRP: Impeller 285452 OPEN B46 Z4, please add the power demand of the degassing unit = 1.3 kW

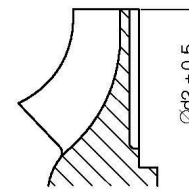
ISSP: Impeller 285452 OPEN B46 Z4, please add the power demand of the degassing unit = 2.0 kW

### Performance Curve - ISP200-600-O-740

740 rpm



IMPELLER DIA
Ød <sub>2</sub> (mm)
625
620
615
610
605
600
595
590
585
580
575
570
565
560
555
550
545
540
535
530
525



RET13937

Exclusively Distributed by

# Retro-Fit

Pumps

## TECHNICAL SPECIFICATIONS



### ISP Process Pumps - ISP250-600 (300-250-600)

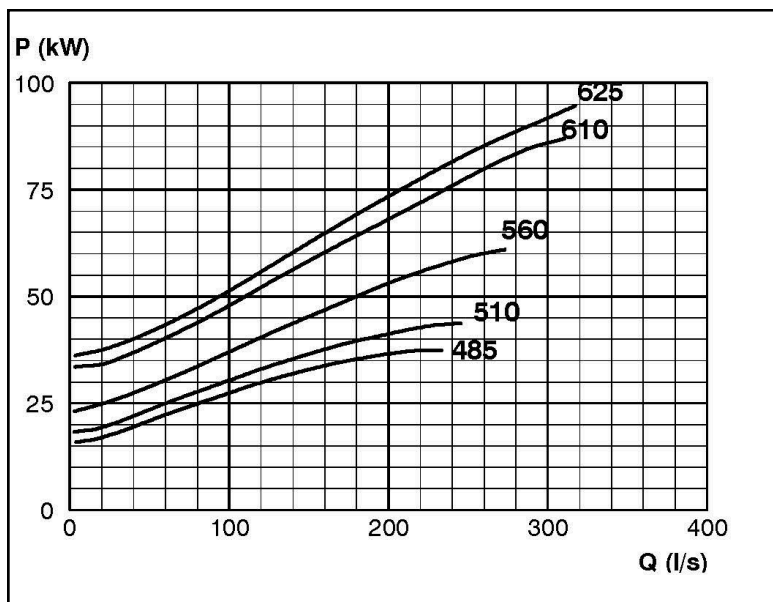
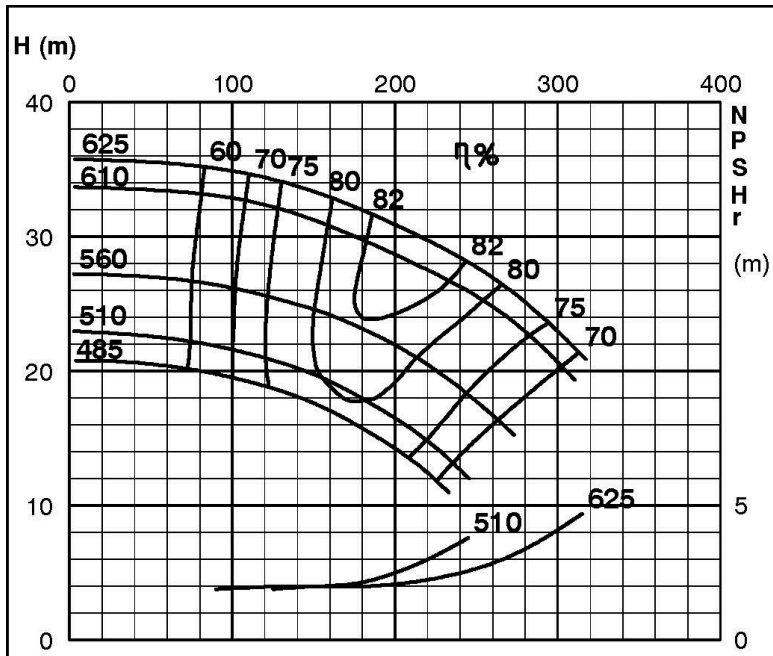
#### ISP Impeller 283939 OPEN B43 Z5

ARP: Impeller 285453 OPEN B43 Z5, please add the power demand of the degassing unit = 1.3 kW

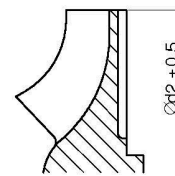
ASP: Impeller 285453 OPEN B43 Z5, please add the power demand of the degassing unit = 2.0 kW

#### Performance Curve - ISP250-600-O-740

740 rpm



IMPELLER DIA
∅d <sub>2</sub> (mm)
625
620
615
610
605
600
595
590
585
580
575
570
565
560
555
550
545
540
535
530
525
520
515
510
505
500
495
490
485



RET13938

# Retro-Fit

Pumps

## TECHNICAL SPECIFICATIONS



ISP Process Pumps - ISP250-600 (300-250-600)

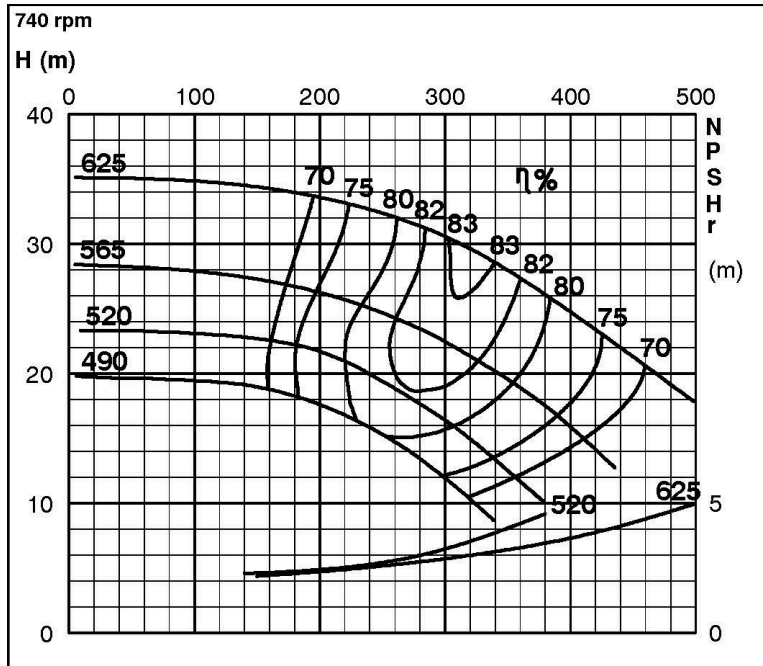
ISP Impeller 283938 OPEN B46 Z4

ISRP: Impeller 285454 OPEN B67 Z5, please add the power demand of the degassing unit = 1.3 kW

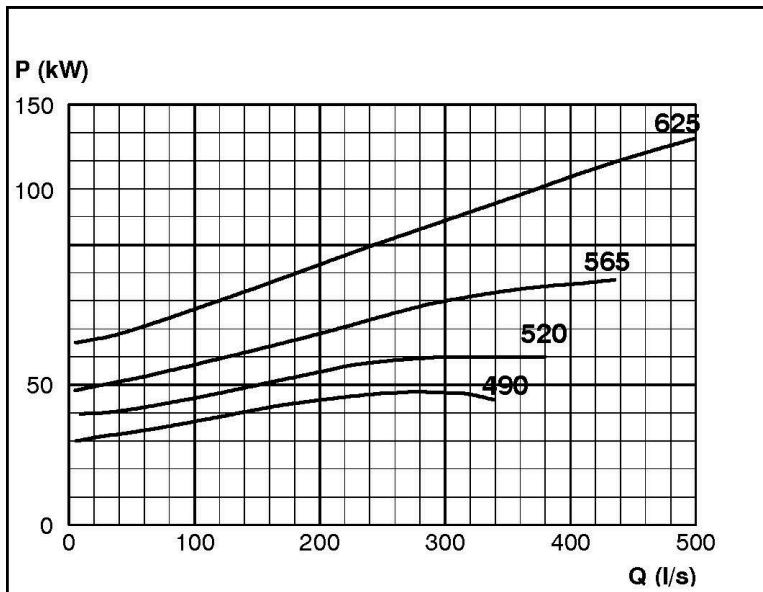
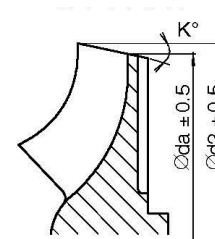
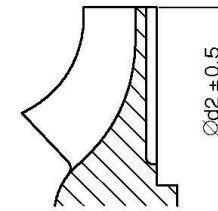
ISSP: Impeller 285454 OPEN B67 Z5, please add the power demand of the degassing unit = 2.0 kW

### Performance Curve - ISP250-600-O-740

740 rpm



IMPELLER DIA		
∅d <sub>2</sub> (mm)	K°	∅d <sub>a</sub> (mm)
625		
620		
615		
610		
605		
600		
595		
590		
585		
580		
575		
570		
565		
560		
555		
550		
545		
540		
535		
530		
525	1	522
520	2	515
515	3	507
510	4	501
505	4.5	493
500	5	486
495	5.5	479
490	6	473



RET13939

# Retro-Fit

Pumps

## TECHNICAL SPECIFICATIONS



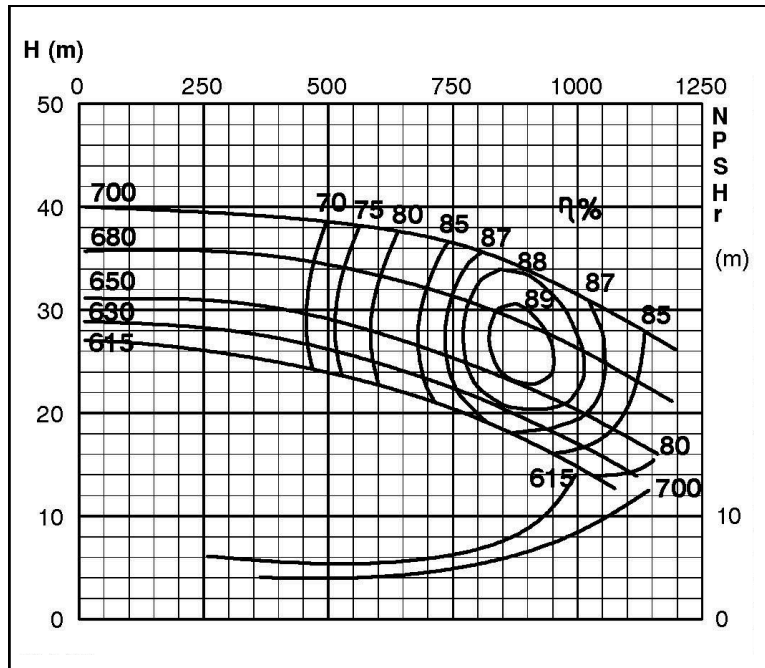
ISP Process Pumps - ISP500-700 (500-500-700)

ISP Impeller 287984 OPEN B108 Z6

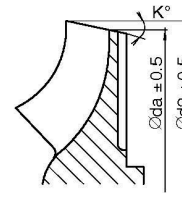
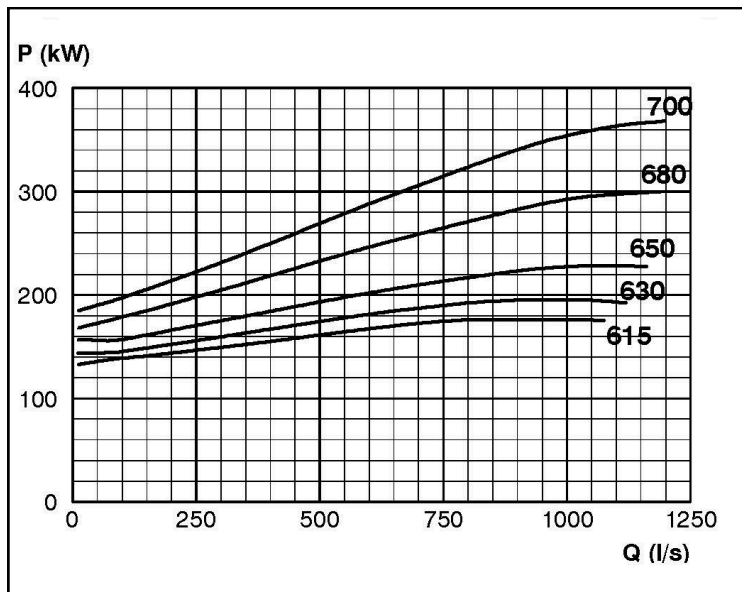
ISR: Impeller 289019 OPEN B108 Z6, please add the power demand of the degassing unit = 2.8 kW

### Performance Curve - ISP500-700-O-740

740 rpm



IMPELLER DIA		
∅d <sub>2</sub> (mm)	K°	∅d <sub>a</sub> (mm)
700	7	673.6
695	7	668.8
690	8	659.6
685	8	654.4
680	9	645.4
675	9	640.2
670	10	631.0
665	10	625.8
660	11	616.6
655	11	611.2
650	12	602.0
645	12	596.6
640	13	587.4
635	13	581.8
630	14	572.4
625	14	567.0
620	15	557.4
615	16	547.8
610	16	542.2
605	17	532.4
600	18	522.6
595	19	512.6
590	20	502.6
585	21	492.4
580	22	482.2
575	23	472.0
570	24	461.4
565	25	450.8
560	26	440.0
555	27	429.0
550	28	418.0



RET13940

# Retro-Fit

Pumps

## TECHNICAL SPECIFICATIONS



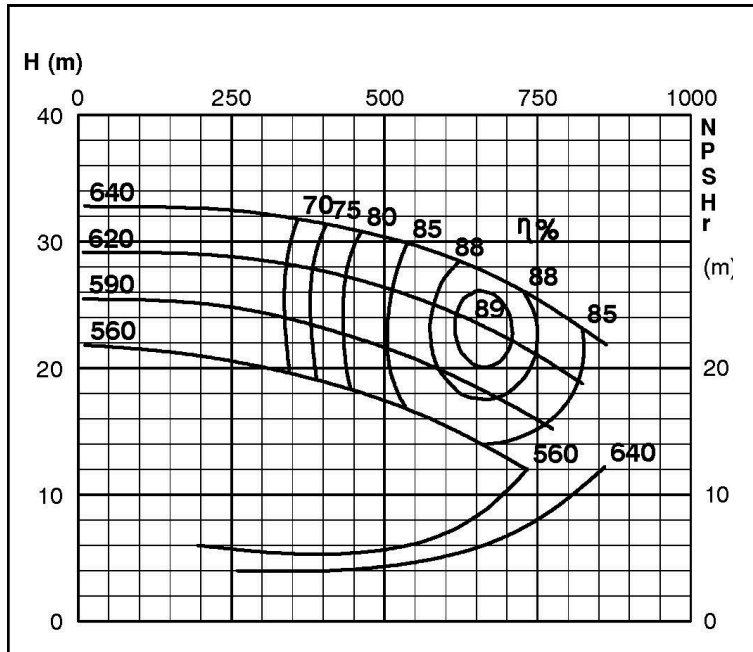
ISP Process Pumps - ISP500-700 (500-500-700)

ISP Impeller 289003 OPEN B98

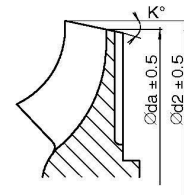
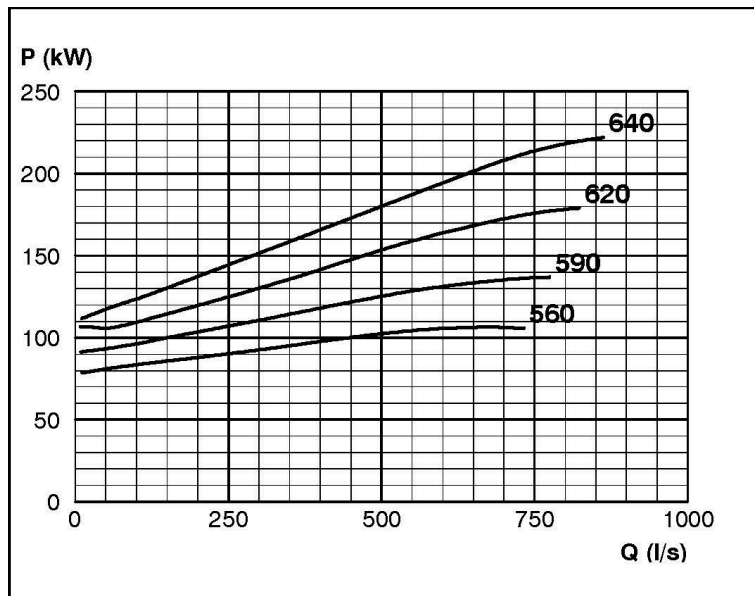
ISRP: Impeller 289211 OPEN B98 Z6, please add the power demand of the degassing unit = 2.8 kW

### Performance Curve - ISP500-700-O-740

740 rpm



IMPELLER DIA		
∅d <sub>2</sub> (mm)	K°	∅d <sub>1</sub> (mm)
640	7	616.1
635	7	611.0
630	8	604.4
625	8	597.2
620	9	588.5
615	10	579.8
610	10	574.6
605	11	565.8
600	11	560.3
595	12	551.6
590	13	542.7
585	13	537.3
580	14	528.3
575	14	522.8
570	15	513.7
565	16	504.5
560	16	498.9
555	17	489.6
550	17	483.9
545	18	474.4
540	19	464.8
535	20	455.1
530	21	445.4
525	22	435.5
520	23	425.4
515	24	415.2
510	25	404.9
505	26	394.3



RET13941

# Retro-Fit

Pumps

## TECHNICAL SPECIFICATIONS



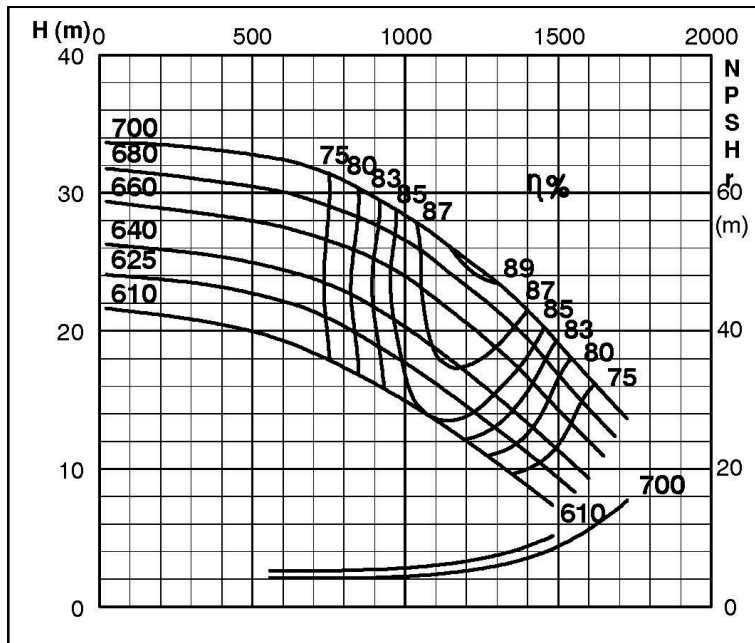
ISP Process Pumps - ISP600-700 (600-600-700)

ISP Impeller 286875 OPEN B133 Z6

ISRP: Impeller 289213 OPEN B121 Z6, Please add the power demand of the degassing unit = 2.8 kW

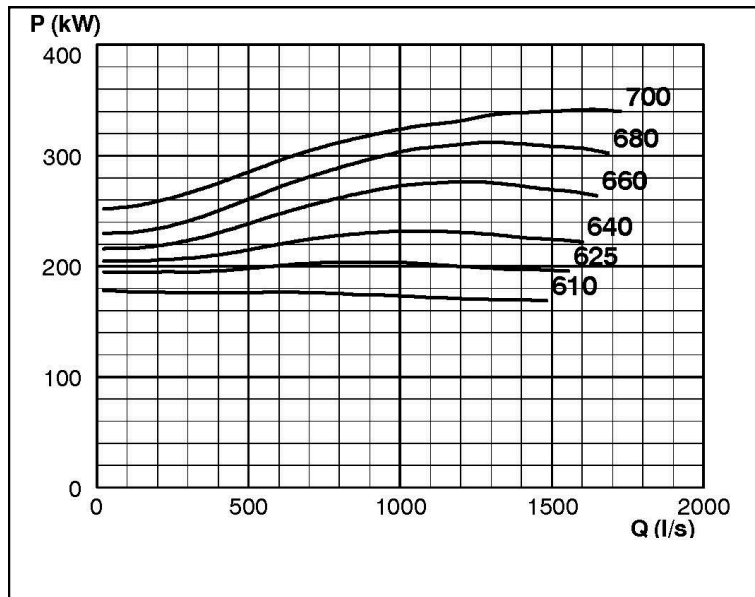
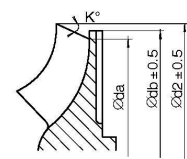
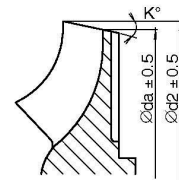
### Performance Curve - ISP600-700-O-740

740 rpm



IMPELLER DIA				
Ød <sub>2</sub> (mm)	K°	Ød <sub>a</sub> (mm)		Ød <sub>b</sub> (mm)
		APP	ARP	
700	15	632	632.4	
695	15	625	626.0	
690	15	620	619.6	
685	15	614	613.2	
680	15	608	606.7	
675	16	598	595.6	
670	16	592	588.7	
665	16	586	582.3	
660	17	576	571.1	
655	17	570	563.8	
650	18	560	499.8	
645	18	554	545.5	
640	19	544	533.7	
635	19	538	526.7	
630	20	526	514.7	
625	20	520	507.2	520 (*)
620	21	509	494.3	520 (*)
615	22	498	482.6	520 (*)
610	23	486	467.4	520 (*)

\* Only for ARP



RET13942

# Retro-Fit

Pumps

## TECHNICAL SPECIFICATIONS

**Retro-Fit**  
Pumps

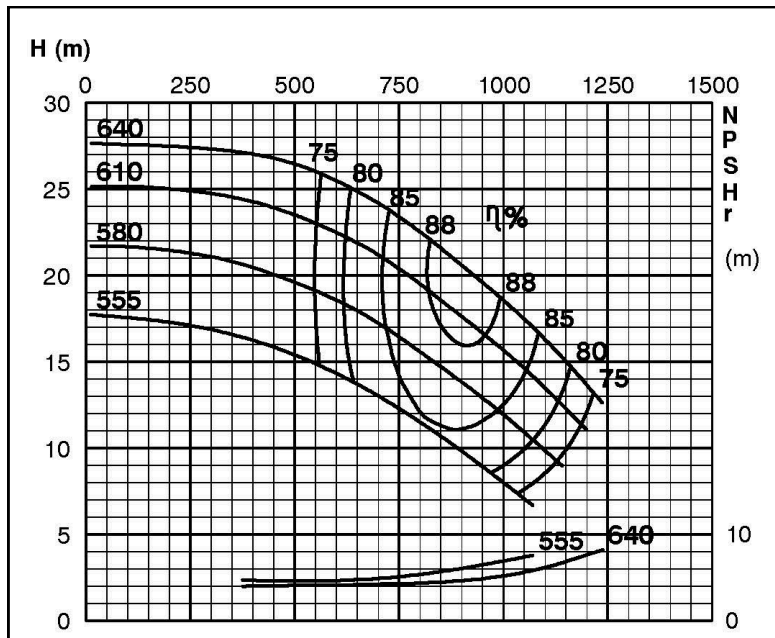
ISP Process Pumps - ISP600-700 (500-500-700)

ISP Impeller 289002 OPEN B121 Z6

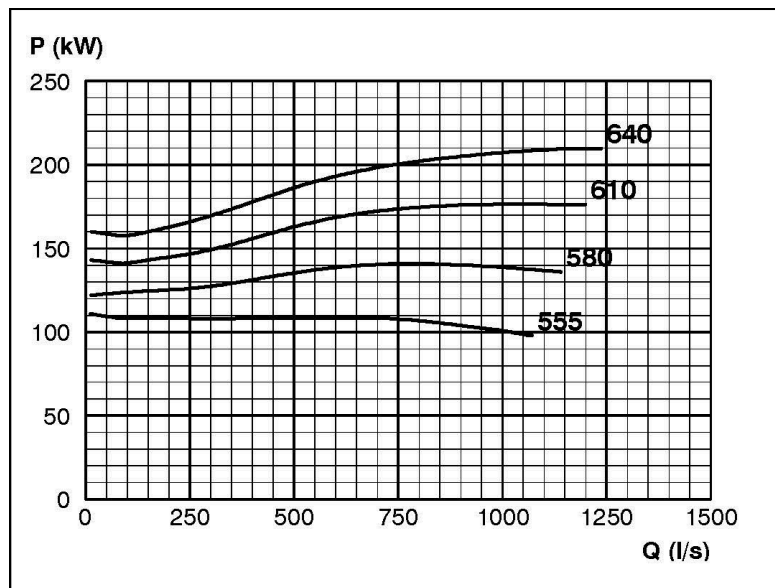
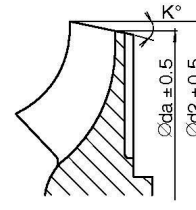
ISRP Impeller 289213 OPEN B121 Z6, please add the power demand of the degassing unit = 2.8 kW

### Performance Curve - ISP600-700-O-740

740 rpm



IMPELLER DIA		
∅d <sub>2</sub> (mm)	K°	∅d <sub>a</sub> (mm)
640	15	577.5
635	15	572.0
630	15	566.5
625	15	561.0
620	15	555.4
615	16	545.6
610	16	540.0
605	16	534.3
600	17	524.3
595	17	518.5
590	18	508.4
585	18	502.5
580	19	492.2
575	19	486.2
570	20	475.7
565	21	465.1
560	22	454.4
555	23	443.2



RET13943

Exclusively Distributed by

# Retro-Fit

Pumps

## TECHNICAL SPECIFICATIONS



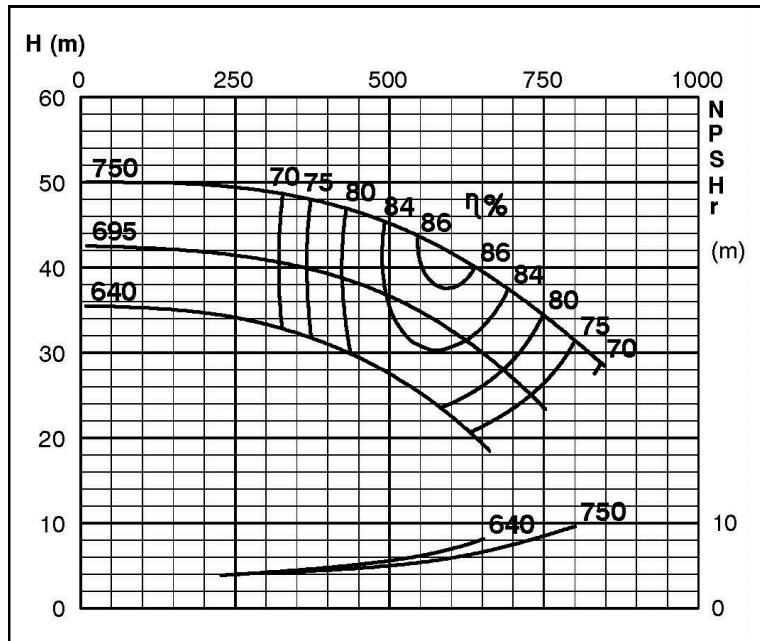
ISP Process Pumps - ISP400-750 (500-400-750)

ISP Impeller 289034 OPEN B84 Z6

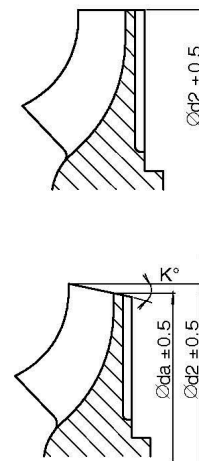
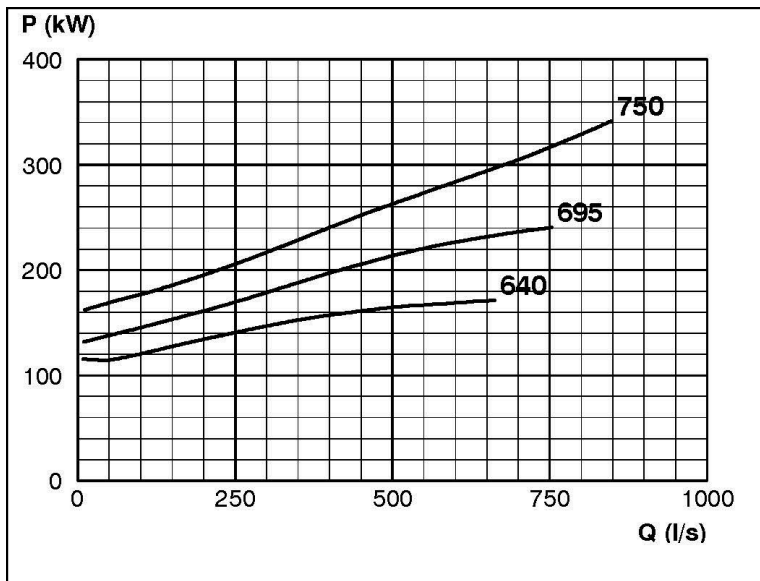
ARP: Impeller 289205 OPEN B84 Z6, please add the power demand of the degassing unit = 2.8 kW

### Performance Curve - ISP400-750-O-740

740 rpm



IMPELLER DIA		
∅d <sub>2</sub> (mm)	K°	∅d <sub>a</sub> (mm)
750		
745		
740		
735		
730		
725		
720		
715		
710		
705		
700		
695		
690		
685		
680		
675		
670		
665		
660		
655		
650	1	646.8
645	1	641.7
640	2	633.4
635	2	628.4
630	3	620.0
625	3	614.9
620	4	606.5
615	5	597.9
610	5	592.8
605	6	584.2



RET13944

# Retro-Fit

Pumps

## TECHNICAL SPECIFICATIONS



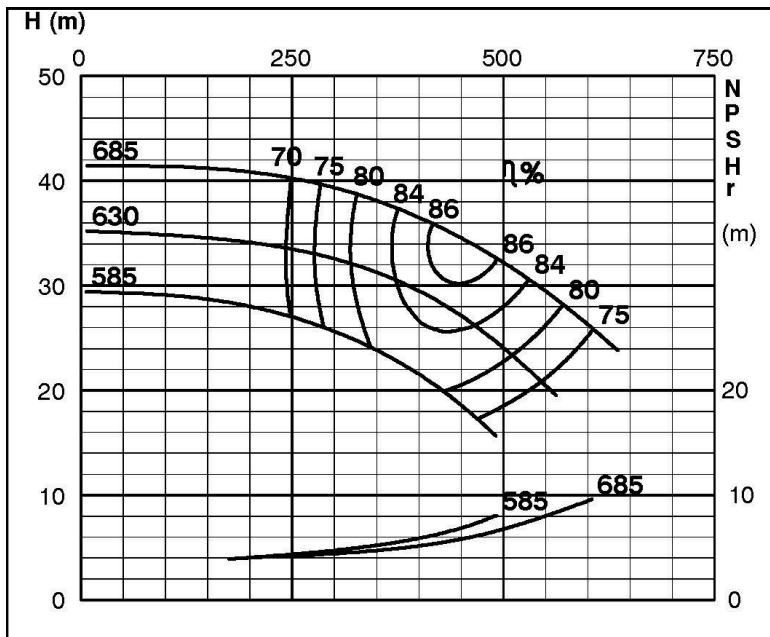
ISP Process Pumps - ISP400-750 (500-400-750)

ISP Impeller 289035 OPEN B76 Z6

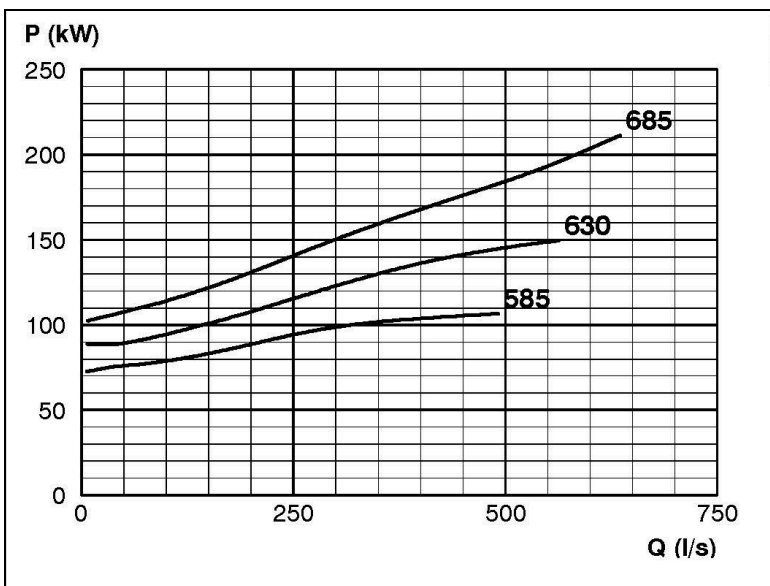
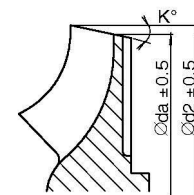
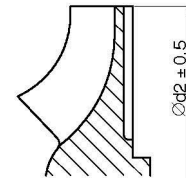
ISRP: Impeller 289207 OPEN B76 Z6, please add the power demand of the degassing unit = 2.8 kW

### Performance Curve - ISP400-750-O-740

740 rpm



IMPELLER DIA		
∅d <sub>2</sub> (mm)	K°	∅d <sub>a</sub> (mm)
685		
680		
675		
670		
665		
660		
655		
650		
645		
640		
635		
630		
625		
620		
615		
610		
605		
600		
595	1	592.1
590	1	587.1
585	2	579.1
580	2	574.0
575	3	568.0
570	3	560.9
565	4	552.7
560	5	544.5
555	5	539.4
550	6	531.1



RET13945