

# Retro-Fit

Pumps

## TECHNICAL SPECIFICATIONS

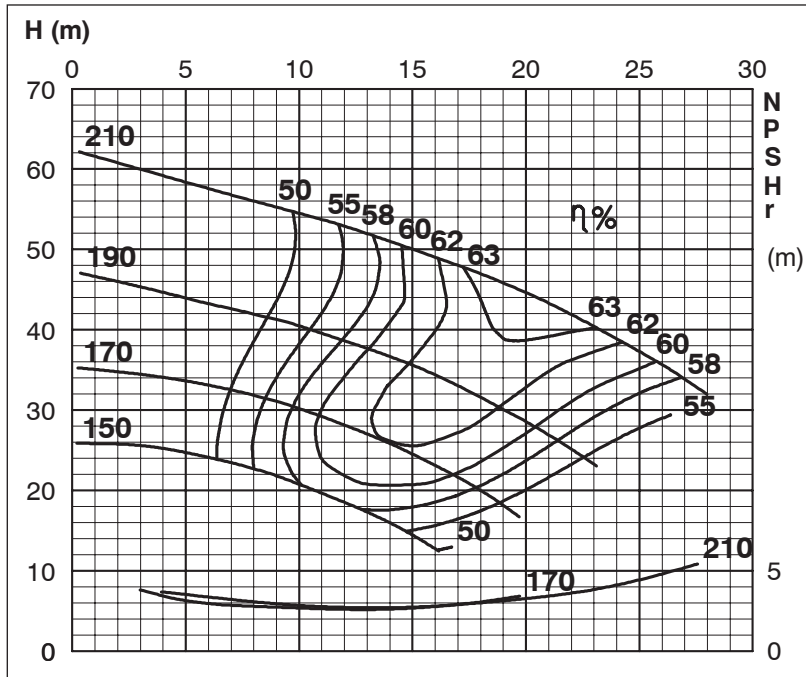
**Retro-Fit**  
Pumps

### ISP Process Pumps - ISP50-200 (50-32-200) ISP Impeller 283869 Open B16 Z3

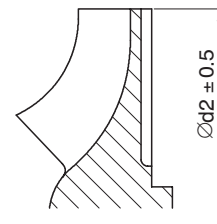
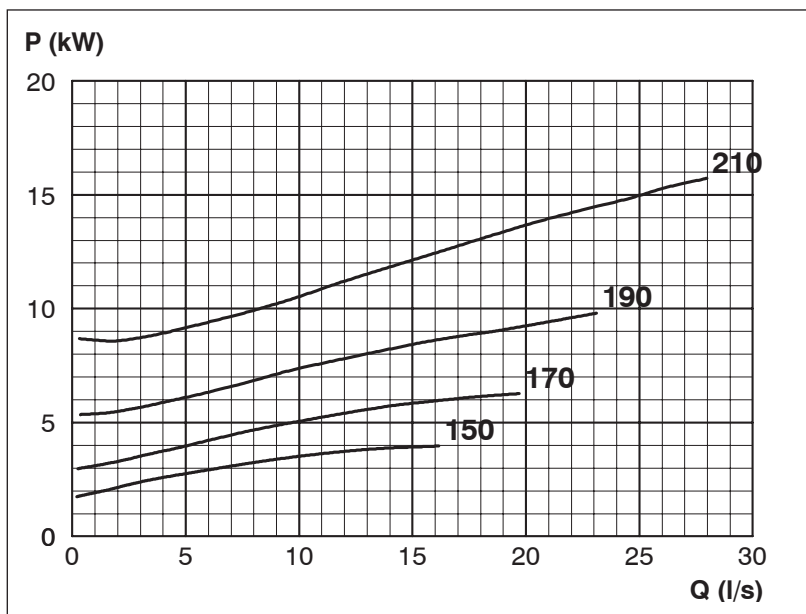
ISRP: Impeller 287958 OPEN B8 Z3, Please add the power demand of the degassing unit = 3.7 kW  
ISSP: Impeller 287958 OPEN B8 Z3, Please add the power demand of the degassing unit = 1.7 kW

#### Performance Curve - ISP50-200-O-2910

2910 rpm



Impeller Dia
Ød <sub>2</sub> (mm)
210
205
200
195
190
185
180
175
170
165
160
155
150



MTP127