

Retroc-Fit

Pumps

TECHNICAL SPECIFICATIONS

Retroc-Fit
Pumps

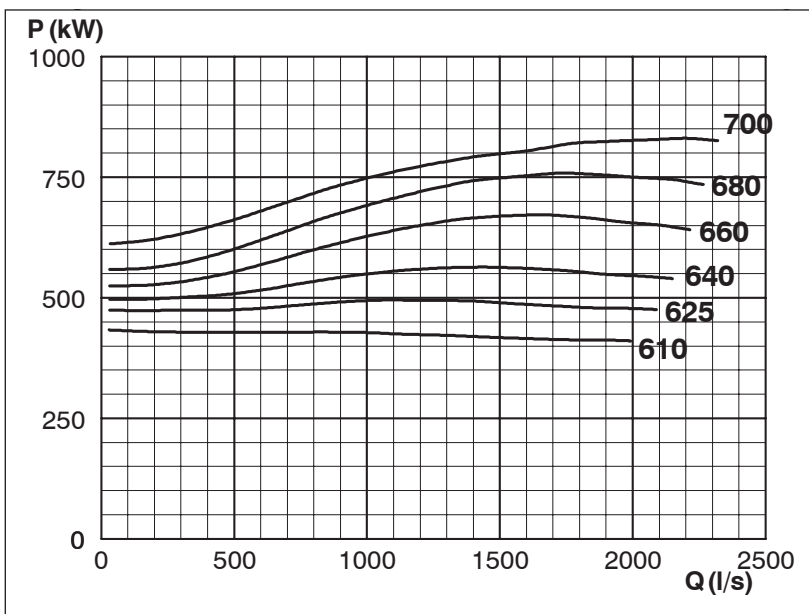
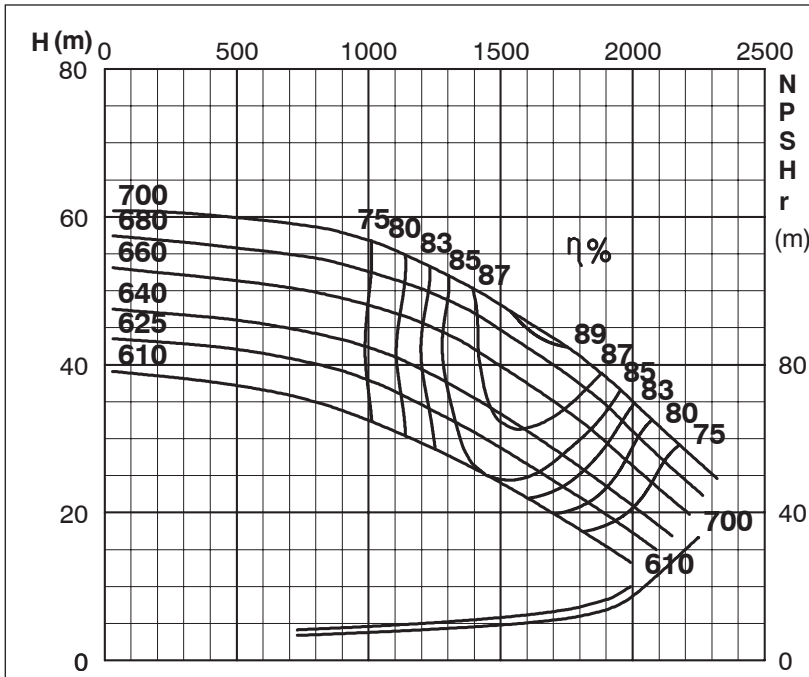
ISP Process Pumps - ISP600-700 (600-600-700)

ISP Impeller 286875 Open B133 Z6

ISRP: Impeller 289213 OPEN B121 Z6, Please add the power demand of the degassing unit = 6.5 kW

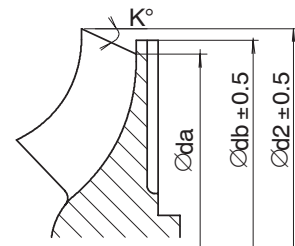
Performance Curve - ISP600-700-O-995

995 rpm



Ød ₂ (mm)	K°	Impeller Dia		Ød _b (mm)
		Ød _a (mm)		
		APP	ARP	
700	15	632.4	632.4	
695	15	625	626.0	
690	15	620	619.6	
685	15	614	613.2	
680	15	608	606.7	
675	16	598	595.6	
670	16	592	588.7	
665	16	586	582.3	
660	17	576	571.1	
655	17	570	563.8	
650	18	560	499.8	
645	18	554	545.5	
640	19	544	533.7	
635	19	538	526.7	
630	20	526	514.7	
625	20	520	507.2	520 (*)
620	21	509	494.3	520 (*)
615	22	498	482.6	520 (*)
610	23	486	467.4	520 (*)

*) Only for ARP



MTP127