

TECHNICAL DATA SHEETS

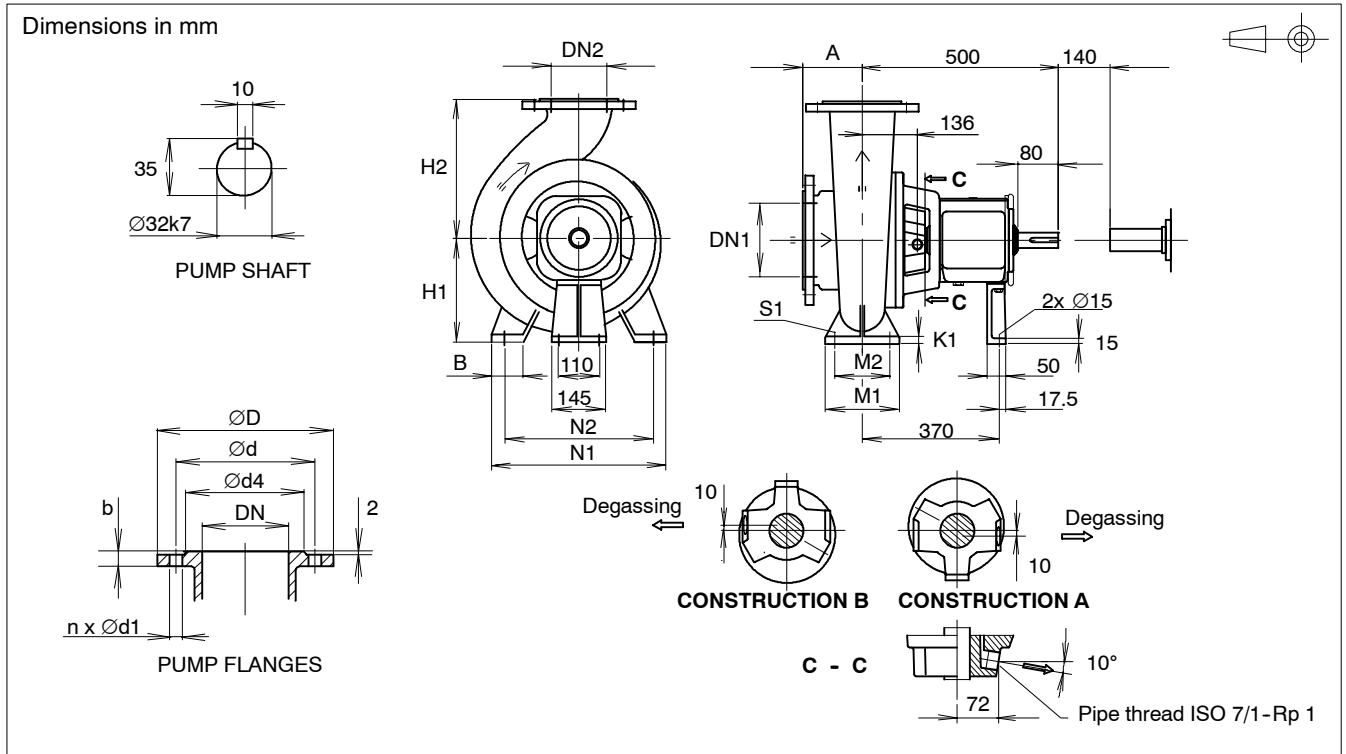
Air Separation Version (ISSP)



TECHNICAL DATA SHEETS

RETRO-FIT ISSP PROCESS PUMP ISSP32-250... ISSP50-315

Dimensional Drawing



DIMENSIONS

Pump size	DN1	DN2	A	H1	H2	B	M1	M2	N1	N2	S1	K1	J kgm ²	Weight kg
ISSP22-32	50	32	100	180	225	55	125	95	300	250	15	18	0.031	120
ISSP22-40	65	40	100	180	225	55	125	95	300	250	15	18	0.031	120
ISSP22-50	80	50	125	180	225	55	125	95	300	250	15	18	0.033	122
ISSP22-65	100	65	125	200	250	65	160	120	340	280	19	20	0.048	124
ISSP22-80	125	80	125	225	280	65	160	120	370	315	19	20	0.071	129
ISSP22-8S	150	80	140	225	280	65	160	120	370	315	19	20	0.071	129
ISSP23-40	65	40	125	225	280	65	125	95	330	280	15	18	0.076	152
ISSP23-50	80	50	125	225	280	65	125	95	330	280	15	18	0.078	152

DRILLING OF FLANGES

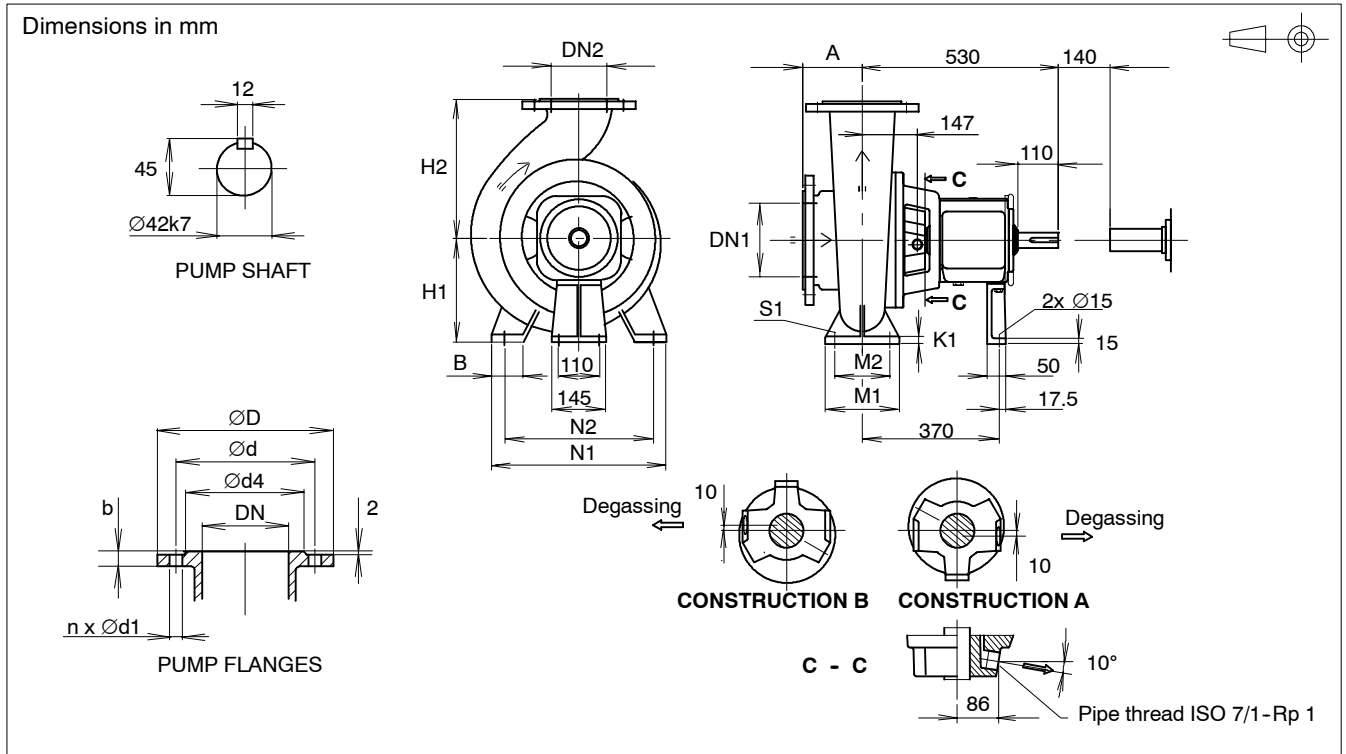
DN	D	d4	b	ISO 7005-1 PN10 ⁽⁴⁾			ISO 7005-1 PN16 ⁽⁴⁾			ISO 7005-2 PN10 ⁽⁴⁾			ISO 7005-2 PN16 ⁽⁴⁾			JIS B 2210 10K			JIS B 2210 16K			ANSI/ASME B 16 Class 125/150		
				d	d1	n	d	d1	n	d	d1	n	d	d1	n	d	d1	n	d	d1	n	d	d1	n
32	140	72	16	100	18	4	100	18	4	100	19	4	100	19	4	100	19	4	100	19	4	89.0	16	4
40	150	81	18	110	18	4	110	18	4	110	19	4	110	19	4	105	19	4	105	19	4	98.5	16	4
50	165	100	20	125	18	4	125	18	4	125	19	4	125	19	4	120	19	4	120	19	8	120.5	20	4
65	185	119	23	145	18	8	145	18	8	145	19	4	145	19	4	140	19	4	140	19	8	139.5	20	4
80	200	130	24	160	18	8	160	18	8	160	19	8	160	19	8	150	19	8	160	23	8	152.5	20	4
100	229	155	24	180	18	8	180	18	8	180	19	8	180	19	8	175	19	8	185	23	8	190.5	20	8
125	270	186	24	210	18	8	210	18	8	210	19	8	210	19	8	210	23	8	225	25	8	216.0	22	8
150	305	212	26	240	22	8	240	22	8	240	23	8	240	23	8	240	23	8	260	25	12	241.5	22	8

1. Same as ISO 2084, DIN 2501 and SFS 2123 except steel flange DN65 n=8.

TECHNICAL DATA SHEETS

RETRO-FIT ISSP PROCESS PUMP ISSP100-250... ISSP125-400

Dimensional Drawing



DIMENSIONS

Pump size	DN1	DN2	A	H1	H2	B	M1	M2	N1	N2	S1	K1	J kgm ²	Weight kg
ISSP31-100	125	100	140	225	280	65	160	120	370	315	19	20	0.103	185
ISSP31-10S	150	100	140	225	280	65	160	120	370	315	19	20	0.103	185
ISSP31-125	150	125	140	250	355	65	160	120	370	315	19	20	0.125	200
ISSP31-10P	150	100	140	250	355	65	160	120	370	315	19	20	0.125	200
ISSP31-150	200	150	160	280	375	85	200	150	470	400	24	20	0.180	230
ISSP32-65	100	65	125	225	280	65	160	120	370	315	19	20	0.083	195
ISSP32-80	125	80	125	250	315	65	160	120	370	315	19	20	0.120	200
ISSP32-8S	150	80	140	250	315	65	160	120	370	315	19	20	0.120	200
ISSP32-100	125	100	140	250	315	65	160	120	370	315	19	20	0.150	210
ISSP32-10S	150	100	140	250	315	65	160	120	370	315	19	20	0.150	210
ISSP32-125	150	125	140	280	355	85	200	150	470	400	24	20	0.200	220
ISSP32-10P	150	100	140	280	355	85	200	150	470	400	24	20	0.200	220
ISSP33-100	125	100	140	280	355	85	200	150	470	400	24	20	0.220	260
ISSP33-10S	150	100	140	280	355	85	200	150	470	400	24	20	0.220	260
ISSP33-125	150	125	140	315	400	85	200	150	470	400	24	20	0.290	275
ISSP33-10P	150	100	140	315	400	85	200	150	470	400	24	20	0.290	275

DRILLING OF FLANGES

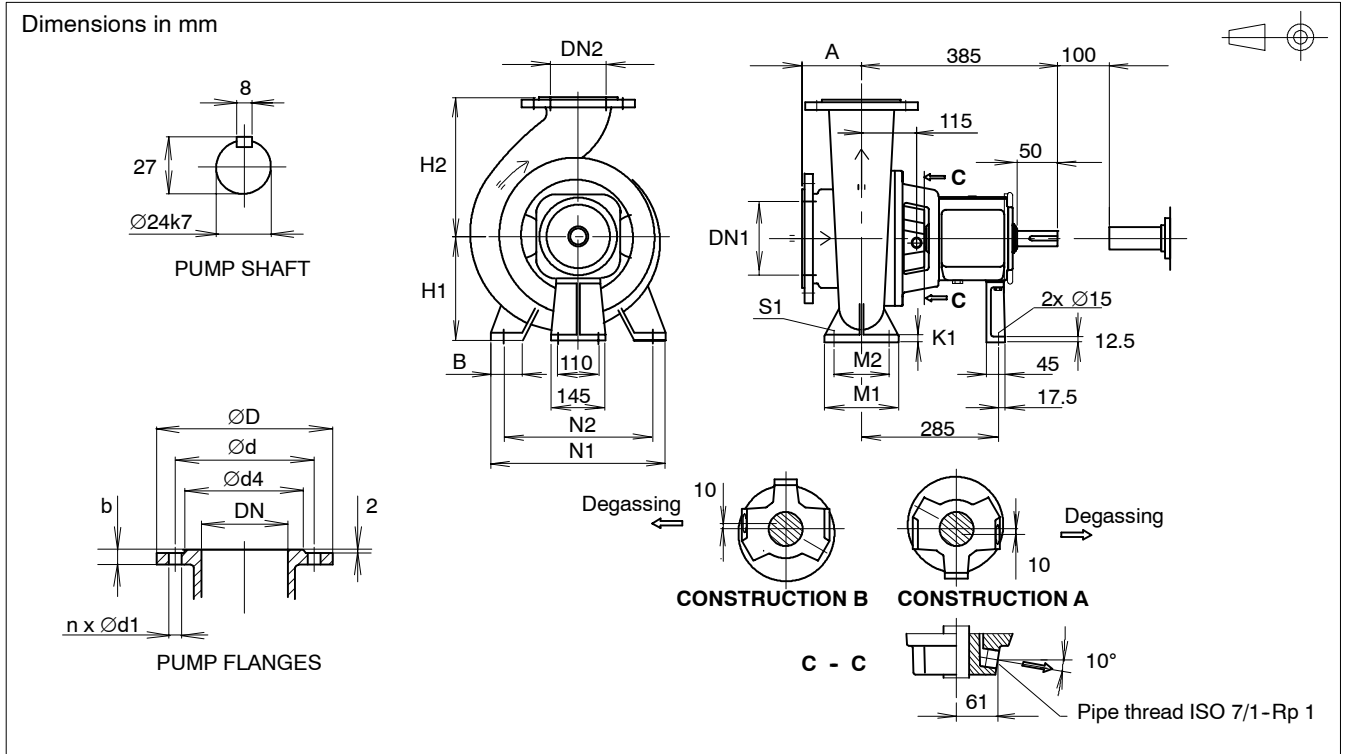
DN	D	ISO 7005-1 PN10 ⁽⁴⁾			ISO 7005-1 PN16 ⁽⁴⁾			ISO 7005-2 PN10 ⁽⁴⁾			ISO 7005-2 PN16 ⁽⁴⁾			JIS B 2210 10K			JIS B 2210 16K			ANSI/ASME B 16 Class 125/150				
		d4	b	n	d	d1	n	d	d1	n	d	d1	n	d	d1	n	d	d1	n	d	d1	n		
65	185	119	23	145	18	8	145	18	8	145	19	4	145	19	4	140	19	4	140	19	8	139.5	20	4
80	200	130	24	160	18	8	160	18	8	160	19	8	160	19	8	150	19	8	160	23	8	152.5	20	4
100	229	155	24	180	18	8	180	18	8	180	19	8	180	19	8	175	19	8	185	23	8	190.5	20	8
125	270	186	24	210	18	8	210	18	8	210	19	8	210	19	8	210	23	8	225	25	8	216.0	22	8
150	305	212	26	240	22	8	240	22	8	240	23	8	240	23	8	240	23	8	260	25	12	241.5	22	8
200	350	266	29	295	22	8	295	22	12	295	23	8	295	23	12	290	23	12	305	25	12	298.5	22	8

1. Same as ISO 2084, DIN 2501 and SFS 2123 except steel flange DN65 n=8.

TECHNICAL DATA SHEETS

RETRO-FIT ISSP PROCESS PUMP ISSP32-200... ISSP50-200

Dimensional Drawing



DIMENSIONS

Pump size	DN1	DN2	A	H1	H2	B	M1	M2	N1	N2	S1	K1	J kgm ²	Weight kg
ISSP11-32	50	32	80	160	180	45	100	70	230	190	15	15	0.007	74
ISSP11-40	65	40	100	160	180	45	100	70	255	212	15	15	0.011	75
ISSP11-50	80	50	100	160	200	45	100	70	255	212	15	15	0.016	76

DRILLING OF FLANGES

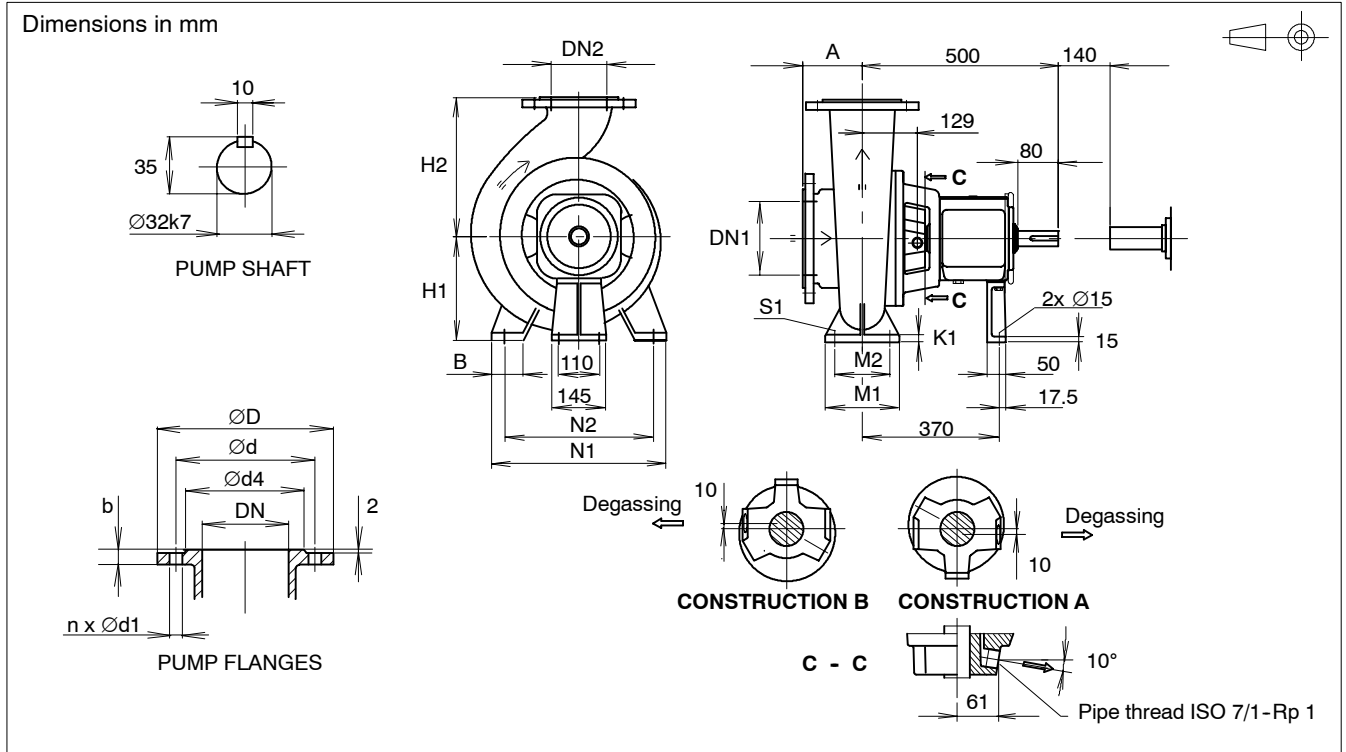
DN	D	d4	b	ISO 7005-1 PN10 ⁽⁴⁾			ISO 7005-1 PN16 ⁽⁴⁾			ISO 7005-2 PN10 ⁽⁴⁾			ISO 7005-2 PN16 ⁽⁴⁾			JIS B 2210 10K			JIS B 2210 16K			ANSI/ASME B 16 Class 125/150		
				d	d1	n	d	d1	n	d	d1	n	d	d1	n	d	d1	n	d	d1	n	d	d1	n
32	140	72	16	100	18	4	100	18	4	100	19	4	100	19	4	100	19	4	100	19	4	89.0	16	4
40	150	81	18	110	18	4	110	18	4	110	19	4	110	19	4	105	19	4	105	19	4	98.5	16	4
50	165	100	20	125	18	4	125	18	4	125	19	4	125	19	4	120	19	4	120	19	8	120.5	20	4
65	185	119	23	145	18	8	145	18	8	145	19	4	145	19	4	140	19	4	140	19	8	139.5	20	4
80	200	130	24	160	18	8	160	18	8	160	19	8	160	19	8	150	19	8	160	23	8	152.5	20	4

1. Same as ISO 2084, DIN 2501 and SFS 2123 except steel flange DN65 n=8.

TECHNICAL DATA SHEETS

RETRO-FIT ISSP PROCESS PUMP ISSP65-200... ISSP80-200

Dimensional Drawing



DIMENSIONS

Pump size	DN1	DN2	A	H1	H2	B	M1	M2	N1	N2	S1	K1	J kgm ²	Weight kg
ISSP21-65	100	65	100	180	225	55	125	95	300	250	15	18	0.025	105
ISSP21-80	125	80	125	180	250	55	125	95	300	280	15	18	0.035	114
ISSP21-8S	150	80	140	180	250	55	125	95	300	280	15	18	0.035	114

DRILLING OF FLANGES

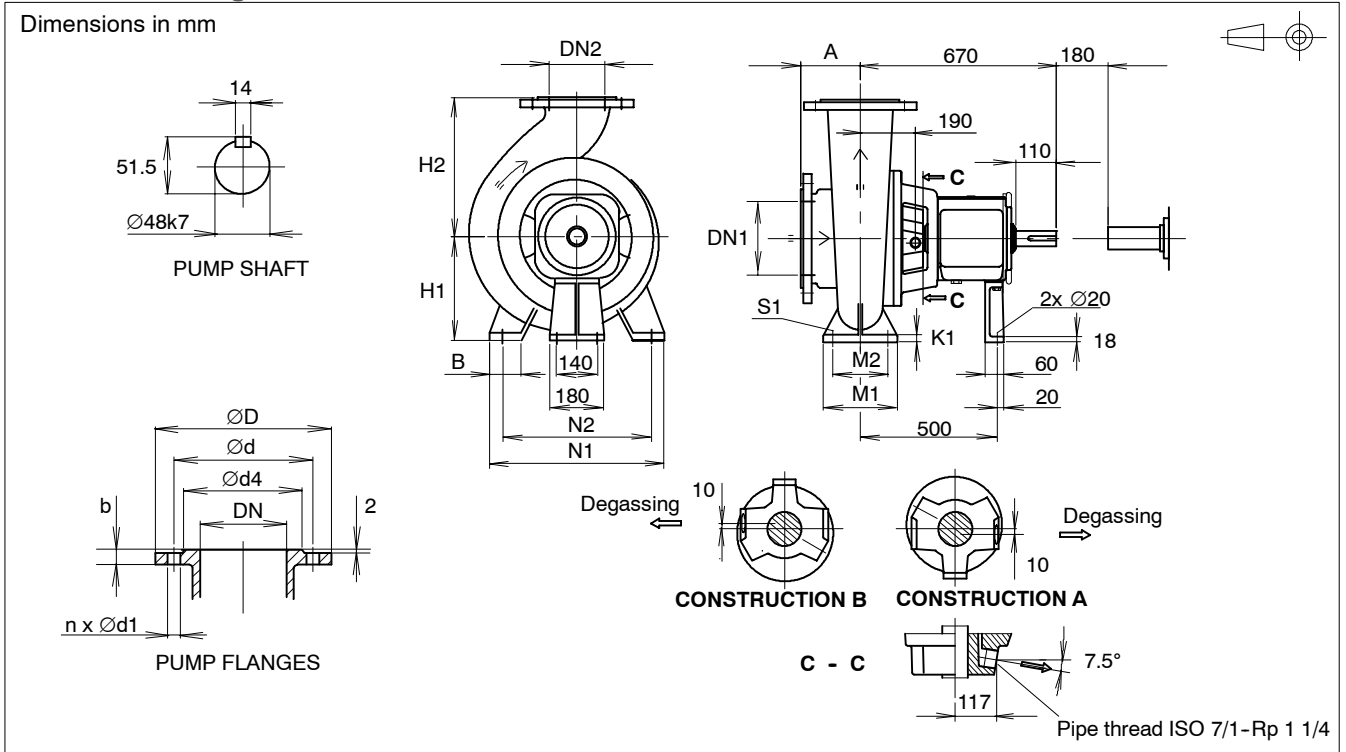
DN	D	d4	b	ISO 7005-1 PN10 ⁽⁴⁾			ISO 7005-1 PN16 ⁽⁴⁾			ISO 7005-2 PN10 ⁽⁴⁾			ISO 7005-2 PN16 ⁽⁴⁾			JIS B 2210 10K			JIS B 2210 16K			ANSI/ASME B 16 Class 125/150		
				d	d1	n	d	d1	n	d	d1	n	d	d1	n	d	d1	n	d	d1	n	d	d1	n
65	185	119	23	145	18	8	145	18	8	145	19	4	145	19	4	140	19	4	140	19	8	139.5	20	4
80	200	130	24	160	18	8	160	18	8	160	19	8	160	19	8	150	19	8	160	23	8	152.5	20	4
100	229	155	24	180	18	8	180	18	8	180	19	8	180	19	8	175	19	8	185	23	8	190.5	20	8
125	270	186	24	210	18	8	210	18	8	210	19	8	210	19	8	210	23	8	225	25	8	216.0	22	8
150	305	212	26	240	22	8	240	22	8	240	23	8	240	23	8	240	23	8	260	25	12	241.5	22	8

1. Same as ISO 2084, DIN 2501 and SFS 2123 except steel flange DN65 n=8.

TECHNICAL DATA SHEETS

RETRO-FIT ISSP PROCESS PUMP ISSP200-250... ISSP200-400

Dimensional Drawing



DIMENSIONS

Pump size	DN1	DN2	A	H1	H2	B	M1	M2	N1	N2	S1	K1	J kgm ²	Weight kg
ISSP41-200	250	200	200	315	450	85	200	150	520	450	24	25	0.310	345
ISSP41-300	300	300	225	400	560	90	250	190	570	500	28	25	0.560	445
ISSP42-150	200	150	160	315	400	85	200	150	520	450	24	25	0.280	295
ISSP42-200	250	200	180	315	450	85	200	150	520	450	24	25	0.370	335
ISSP43-250	300	250	225	400	560	90	250	190	570	500	28	25	0.750	420
ISSP43-300	350	300	250	450	630	90	250	190	570	500	28	25	0.980	520
ISSP44-150	200	150	160	315	450	85	200	150	520	450	24	25	0.410	320
ISSP44-200	250	200	180	355	500	85	200	150	520	450	24	25	0.620	365

DRILLING OF FLANGES

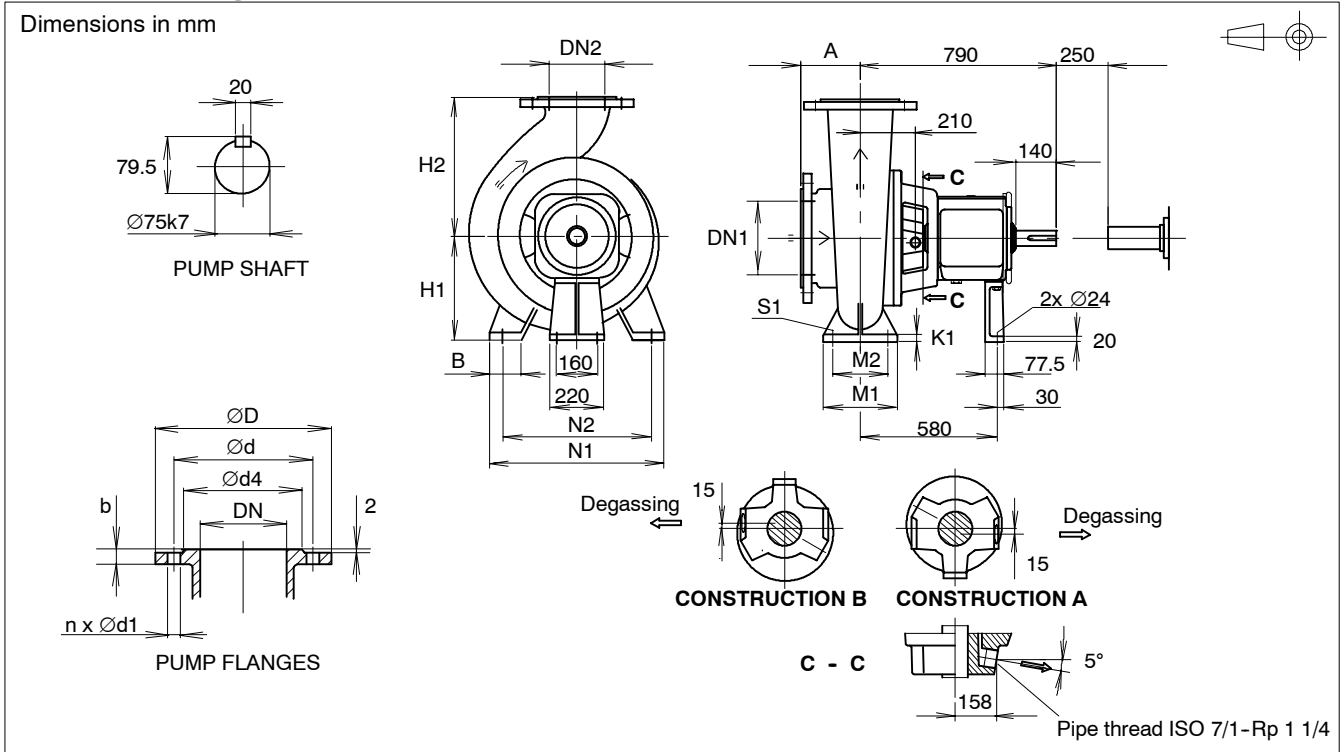
DN	D	d4	b	ISO 7005-1 PN10 ⁽⁴⁾			ISO 7005-1 PN16 ⁽⁴⁾			ISO 7005-2 PN10 ⁽⁴⁾			ISO 7005-2 PN16 ⁽⁴⁾			JIS B 2210 10K			JIS B 2210 16K			ANSI/ASME B 16 Class 125/150		
				d	d1	n	d	d1	n	d	d1	n	d	d1	n	d	d1	n	d	d1	n	d	d1	n
150	305	212	26	240	22	8	240	22	8	240	23	8	240	23	8	240	23	8	260	25	12	241.5	22	8
200	350	266	29	295	22	8	295	22	12	295	23	8	295	23	12	290	23	12	305	25	12	298.5	22	8
250	430	320	31	350	22	12	355	26	12	350	23	12	355	28	12	355	25	12	380	27	12	362.0	26	12
300	485	370	32	400	22	12	410	26	12	400	23	12	410	28	12	400	25	16	430	27	16	432.0	26	12
350	540	419	36	460	22	16	470	26	16	460	23	16	470	28	16	445	25	16	480	33	16	476.0	30	12

- Same as ISO 2084, DIN 2501 and SFS 2123 except steel flange DN65 n=8.

TECHNICAL DATA SHEETS

RETRO-FIT ISSP PROCESS PUMP **ISSP250-400... ISSP400-500** **ISSP200-600... ISSP300-600**

Dimensional Drawing



DIMENSIONS

Pump size	DN1	DN2	A	H1	H2	B	M1	M2	N1	N2	S1	K1	J kgm ²	Weight kg
ISSP51-250	300	250	200	450	560	90	250	190	570	500	28	25	1.080	485
ISSP51-300	350	300	250	450	670	90	250	190	570	500	28	25	1.400	620
ISSP52-350	400	350	280	560	800	110	315	250	680	600	28	30	1.830	800
ISSP52-400	400	400	280	630	850	135	400	315	940	850	35	30	2.800	910
ISSP53-100	200	100	180	400	500	90	250	190	570	500	28	25	0.760	400
ISSP53-150	250	150	180	400	500	90	250	190	570	500	28	25	0.810	430
ISSP53-200	250	200	180	400	560	90	250	190	570	500	28	25	1.300	550
ISSP53-250	300	250	200	450	630	90	250	190	570	500	28	25	1.750	620
ISSP53-300	350	300	250	500	670	90	250	190	570	500	28	25	2.100	670
ISSP54-400	500	400	355	630	850	135	400	315	940	850	35	30	3.900	1100
ISSP54-500	500	500	355	710	1000	135	400	315	940	850	35	30	4.400	1240
ISSP55-200	300	200	200	500	630	110	315	250	680	600	28	30	3.400	860
ISSP55-250	300	250	225	500	710	110	315	250	680	600	28	30	3.500	940
ISSP55-300	400	300	250	560	800	110	315	250	680	600	28	30	4.100	1030

DRILLING OF FLANGES

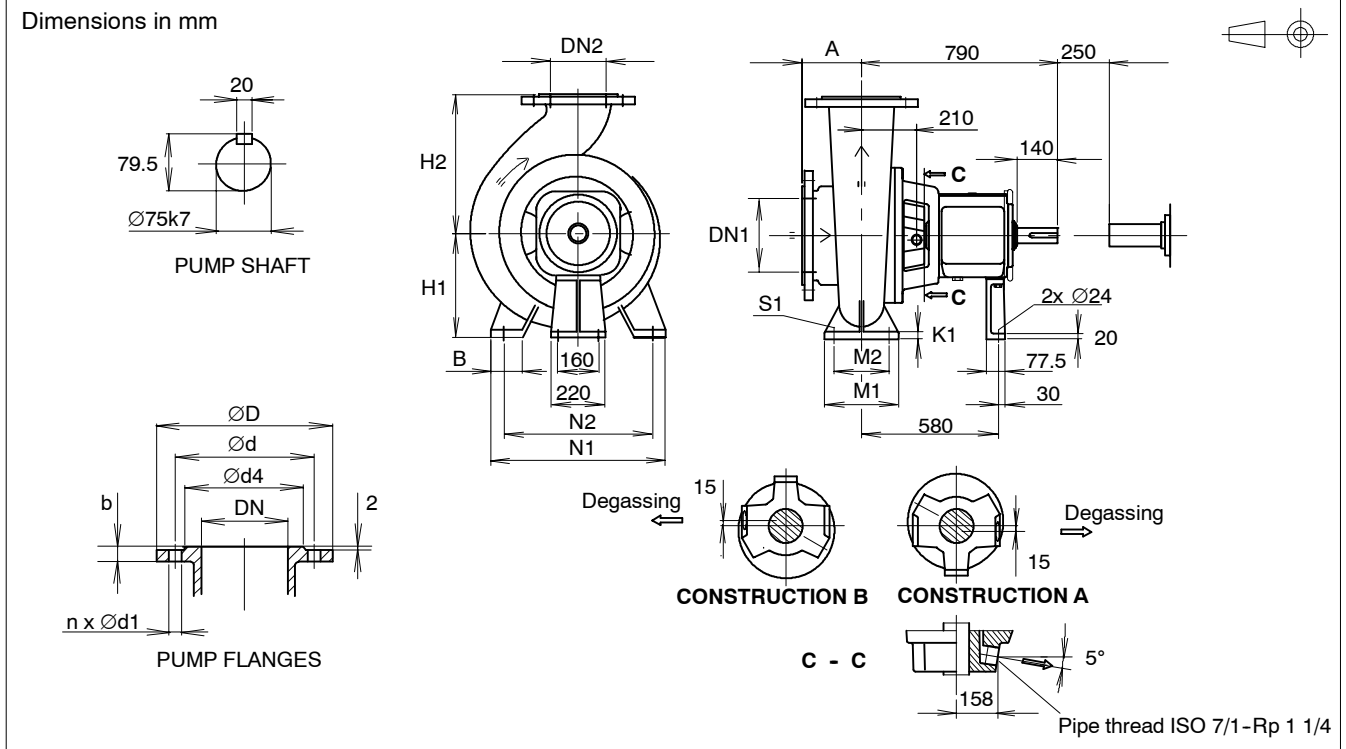
DN	D	d4	b	ISO 7005-1 PN10 ⁽⁴⁾			ISO 7005-1 PN16 ⁽⁴⁾			ISO 7005-2 PN10 ⁽⁴⁾			ISO 7005-2 PN16 ⁽⁴⁾			JIS B 2210 10K			JIS B 2210 16K			ANSI/ASME B 16 Class 125/150		
				d	d1	n	d	d1	n	d	d1	n	d	d1	n	d	d1	n	d	d1	n	d	d1	n
100	229	155	24	180	18	8	180	18	8	180	19	8	180	19	8	175	19	8	185	23	8	190.5	20	8
150	305	212	26	240	22	8	240	22	8	240	23	8	240	23	8	240	23	8	260	25	12	241.5	22	8
200	350	266	29	295	22	8	295	22	12	295	23	8	295	23	12	290	23	12	305	25	12	298.5	22	8
250	430	320	31	350	22	12	355	26	12	350	23	12	355	28	12	355	25	12	380	27	12	362.0	26	12
300	485	370	32	400	22	12	410	26	12	400	23	12	410	28	12	400	25	16	430	27	16	432.0	26	12
350	540	419	36	460	22	16	470	26	16	460	23	16	470	28	16	445	25	16	480	33	16	476.0	30	12
400	605	482	37	515	26	16	525	30	16	515	28	16	525	31	16	510	27	16	540	33	16	540.0	30	16
500	730	585	43	620	26	20	650	33	20	620	28	20	650	34	20	620	27	20	660	33	20	635.0	33	20

1. Same as ISO 2084, DIN 2501 and SFS 2123 except steel flange DN65 n=8.

TECHNICAL DATA SHEETS

RETRO-FIT ISSP PROCESS PUMP ISSP100-600

Dimensional Drawing



DIMENSIONS

Pump size	DN1	DN2	A	H1	H2	B	M1	M2	N1	N2	S1	K1	J kgm ²	Weight kg
ISSP55-100	200	100	250	450	560	90	250	190	570	500	28	25	3.100	790

DRILLING OF FLANGES

DN	D	ISO 7005-1 PN10 ⁽¹⁾		ISO 7005-1 PN16 ⁽¹⁾			ISO 7005-1 PN25 ⁽¹⁾			JIS B 2210 10K			JIS B 2210 16K			ANSI/ASME B 16 Class 125/150					
		d4 ⁽²⁾	b ⁽²⁾	d	d1	n	d	d1	n	d	d1	n	d	d1	n	d	d1	n			
100	254	158 (155)	32 (24)	180	18	8	180	18	8	190	22	8	175	19	8	185	23	8	190.5	20	8
200	381	278 (266)	42 (29)	295	22	8	295	22	12	310	26	12	290	23	12	305	25	12	298.5	22	8
DN	D	ISO 7005-2 PN10 ⁽¹⁾		ISO 7005-2 PN16 ⁽¹⁾			JIS B 2210 30K			ASME B 16.5 Class 300											
		d4 ⁽²⁾	b ⁽²⁾	d	d1	n	d	d1	n	d	d1	n	d	d1	n						
100	254	158 (155)	32 (24)	180	19	8	180	19	8				195	25	8				200.0	23	8
200	381	278 (266)	42 (29)	295	23	18	295	23	12				320	27	12				330.2	25	12

1. Same as ISO 2084, DIN 2501 and SFS 2123 except steel flange DN65 n=8.

2. Dimensions in brackets for cast iron.