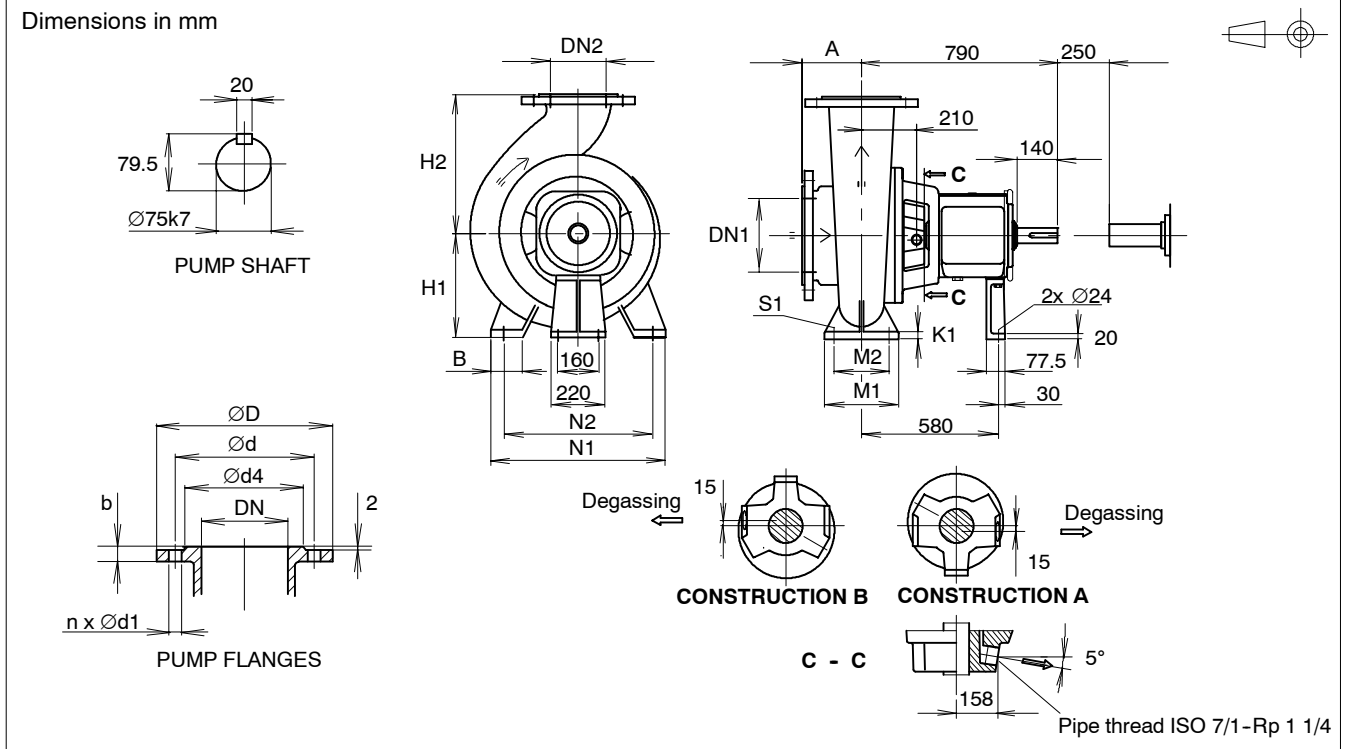


TECHNICAL DATA SHEETS

RETRO-FIT ISSP PROCESS PUMP ISSP100-600

Dimensional Drawing



DIMENSIONS

Pump size	DN1	DN2	A	H1	H2	B	M1	M2	N1	N2	S1	K1	J kgm ²	Weight kg
ISSP55-100	200	100	250	450	560	90	250	190	570	500	28	25	3.100	790

DRILLING OF FLANGES

DN	D	ISO 7005-1 PN10 ⁽¹⁾		ISO 7005-1 PN16 ⁽¹⁾			ISO 7005-1 PN25 ⁽¹⁾			JIS B 2210 10K			JIS B 2210 16K			ANSI/ASME B 16 Class 125/150					
		d4 ⁽²⁾	b ⁽²⁾	d	d1	n	d	d1	n	d	d1	n	d	d1	n	d	d1	n			
100	254	158 (155)	32 (24)	180	18	8	180	18	8	190	22	8	175	19	8	185	23	8	190.5	20	8
200	381	278 (266)	42 (29)	295	22	8	295	22	12	310	26	12	290	23	12	305	25	12	298.5	22	8
				ISO 7005-2 PN10 ⁽¹⁾			ISO 7005-2 PN16 ⁽¹⁾			JIS B 2210 30K			ASME B 16.5 Class 300								
				d	d1	n	d	d1	n	d	d1	n	d	d1	n	d	d1	n	d	d1	n
100	254	158 (155)	32 (24)	180	19	8	180	19	8				195	25	8				200.0	23	8
200	381	278 (266)	42 (29)	295	23	18	295	23	12				320	27	12				330.2	25	12

1. Same as ISO 2084, DIN 2501 and SFS 2123 except steel flange DN65 n=8.

2. Dimensions in brackets for cast iron.