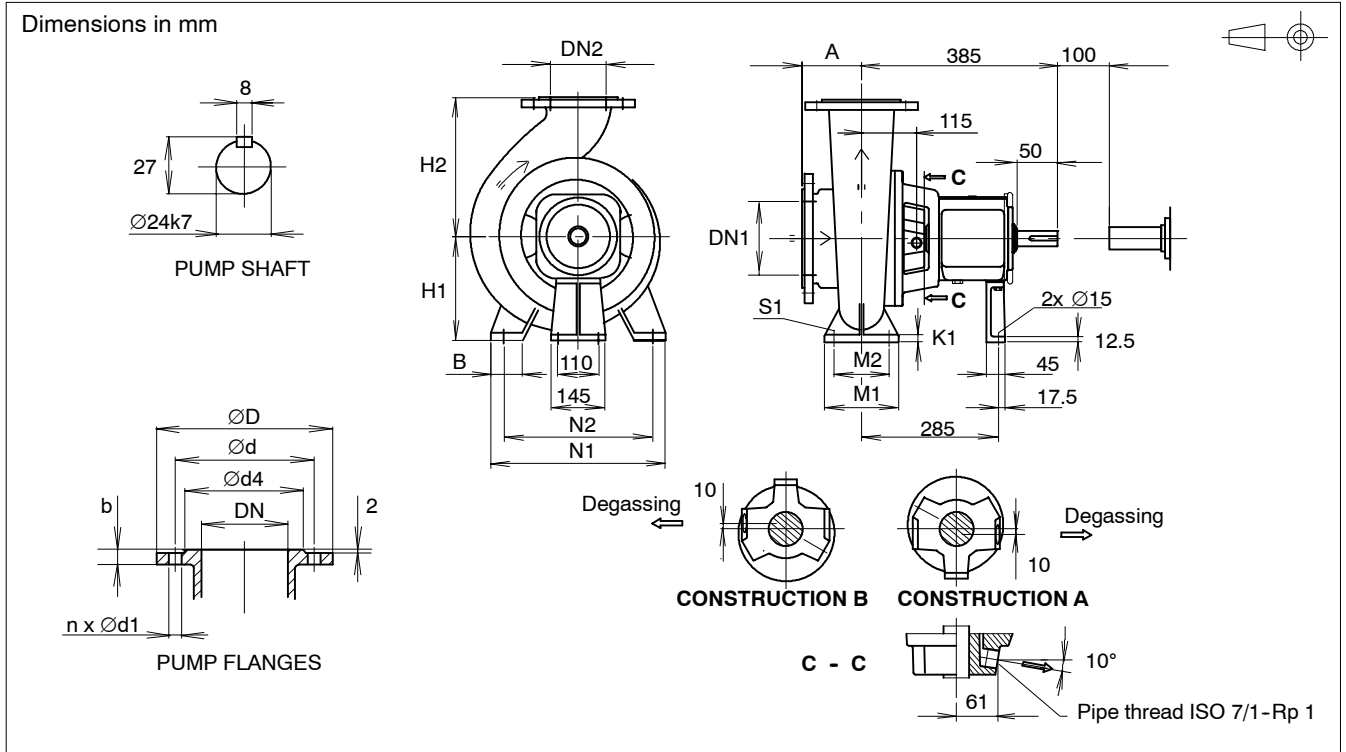


TECHNICAL DATA SHEETS

RETRO-FIT ISSP PROCESS PUMP ISSP32-200... ISSP50-200

Dimensional Drawing



DIMENSIONS

Pump size	DN1	DN2	A	H1	H2	B	M1	M2	N1	N2	S1	K1	J kgm ²	Weight kg
ISSP11-32	50	32	80	160	180	45	100	70	230	190	15	15	0.007	74
ISSP11-40	65	40	100	160	180	45	100	70	255	212	15	15	0.011	75
ISSP11-50	80	50	100	160	200	45	100	70	255	212	15	15	0.016	76

DRILLING OF FLANGES

DN	D	d4	b	ISO 7005-1 PN10 ⁽⁴⁾			ISO 7005-1 PN16 ⁽⁴⁾			ISO 7005-2 PN10 ⁽⁴⁾			ISO 7005-2 PN16 ⁽⁴⁾			JIS B 2210 10K			JIS B 2210 16K			ANSI/ASME B 16 Class 125/150		
				d	d1	n	d	d1	n	d	d1	n	d	d1	n	d	d1	n	d	d1	n	d	d1	n
32	140	72	16	100	18	4	100	18	4	100	19	4	100	19	4	100	19	4	100	19	4	89.0	16	4
40	150	81	18	110	18	4	110	18	4	110	19	4	110	19	4	105	19	4	105	19	4	98.5	16	4
50	165	100	20	125	18	4	125	18	4	125	19	4	125	19	4	120	19	4	120	19	8	120.5	20	4
65	185	119	23	145	18	8	145	18	8	145	19	4	145	19	4	140	19	4	140	19	8	139.5	20	4
80	200	130	24	160	18	8	160	18	8	160	19	8	160	19	8	150	19	8	160	23	8	152.5	20	4

1. Same as ISO 2084, DIN 2501 and SFS 2123 except steel flange DN65 n=8.