

Retro-Fit

Pumps

TECHNICAL SPECIFICATIONS

Retro-Fit
Pumps

ISP Process Pumps - ISP32-250

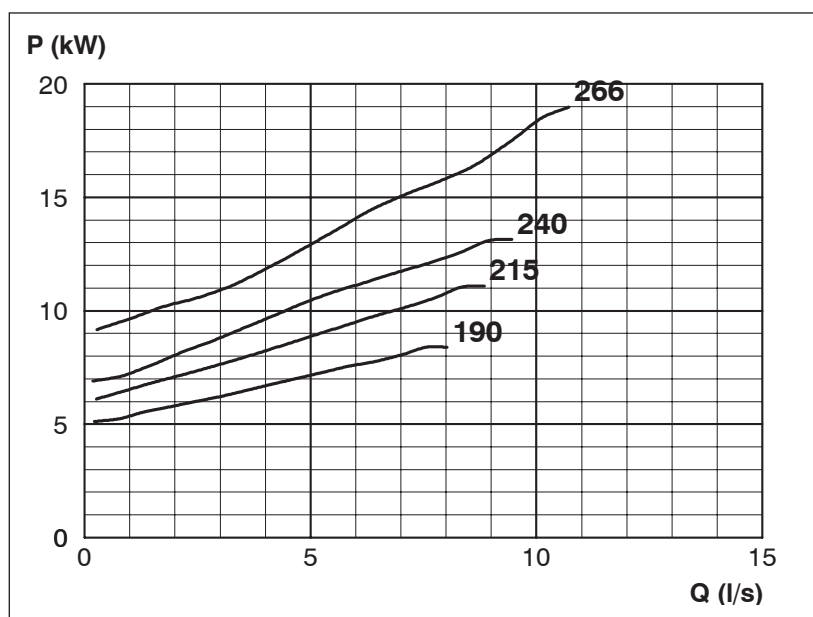
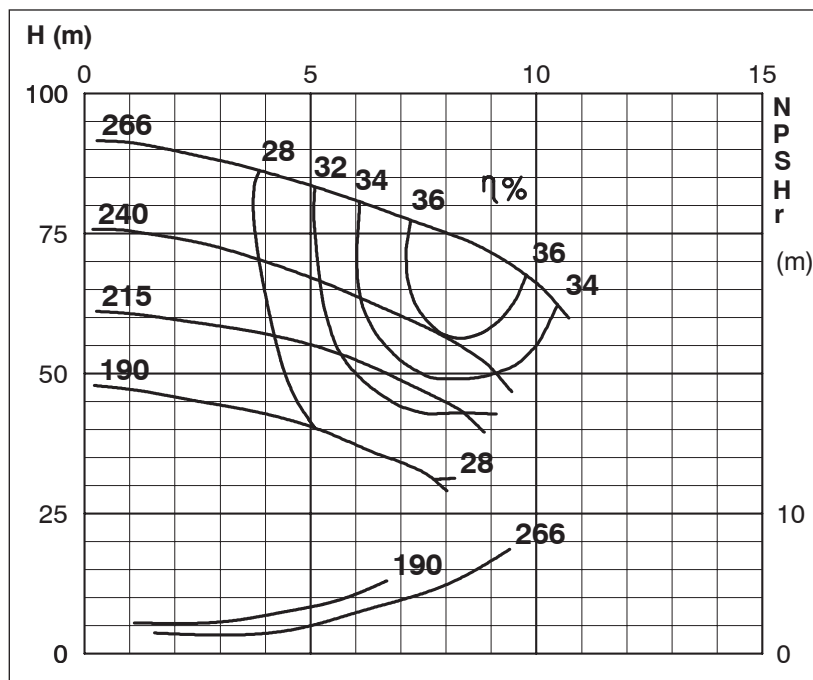
ISP Impeller 288449 Open B7 Z3

ISRP: Impeller 289016 OPEN B7 Z3, Please add the power demand of the degassing unit = 7.1 kW

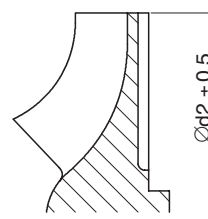
ISSP: Impeller 289016 OPEN B7 Z3, Please add the power demand of the degassing unit = 2.5 kW

Performance Curve - ISP32-250-O-2910

2910 rpm



Impeller Dia
Ød ₂ (mm)
266
260
255
250
245
240
235
230
225
220
215
210
205
200
195
190
185
180
175
170
165



MTP127

Exclusively Distributed by