

# Retro-Fit

Pumps

## TECHNICAL SPECIFICATIONS

**Retro-Fit**  
Pumps

**ISP Process Pumps - ISP50-200 (50-32-200)**

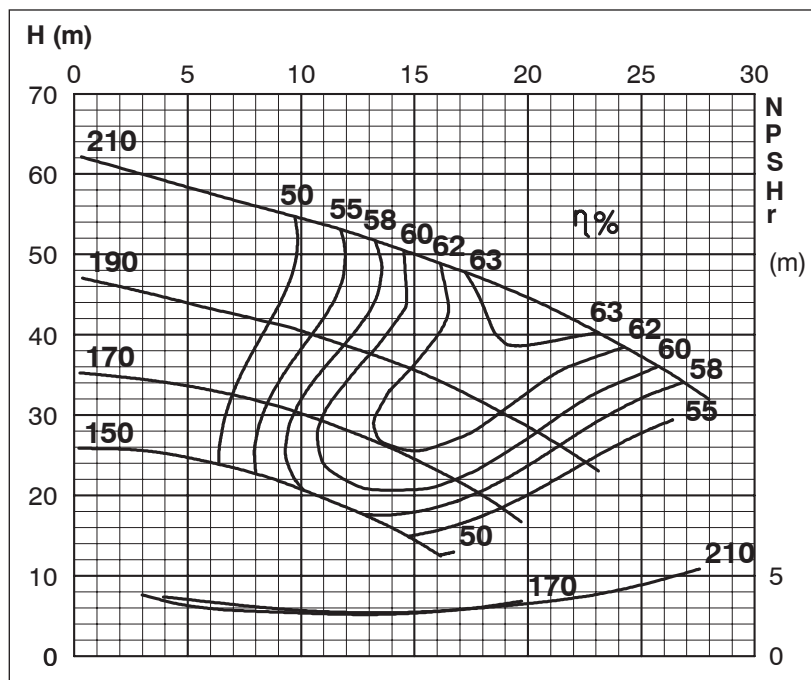
**ISP Impeller 283869 Open B16 Z3**

ISRP: Impeller 287958 OPEN B8 Z3, Please add the power demand of the degassing unit = 3.7 kW

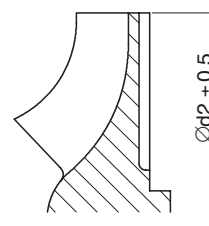
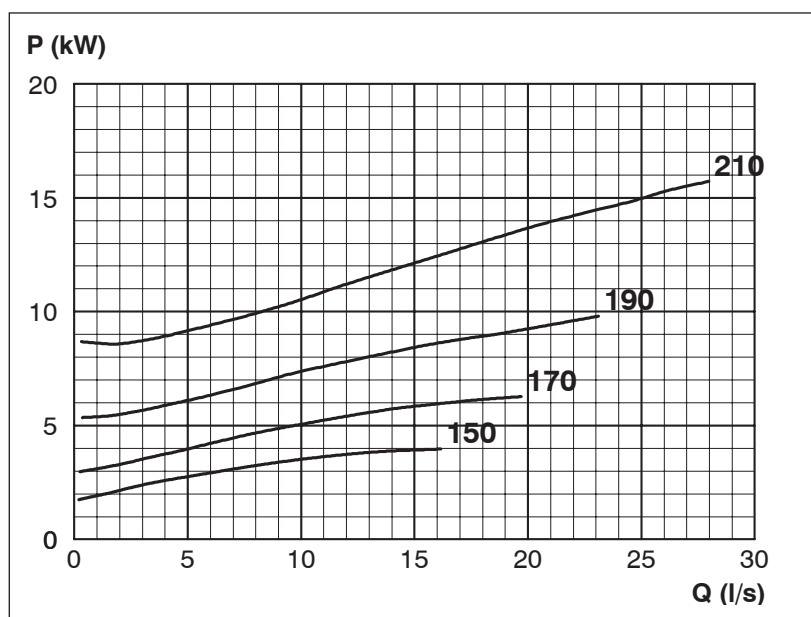
ISSP: Impeller 287958 OPEN B8 Z3, Please add the power demand of the degassing unit = 1.7 kW

### Performance Curve - ISP50-200-O-2910

2910 rpm



Impeller Dia
Ød <sub>2</sub> (mm)
210
205
200
195
190
185
180
175
170
165
160
155
150



MTP127