

Retro-Fit

Pumps

TECHNICAL SPECIFICATIONS

Retro-Fit
Pumps

ISP Process Pumps - ISP65-200 (100-65-200)

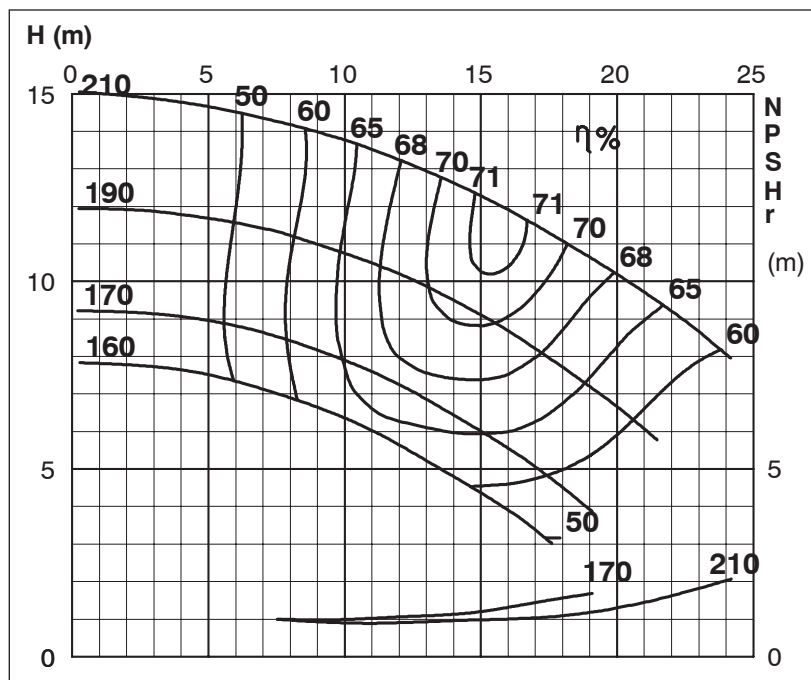
ISP Impeller 283870 Open B22 Z4

ISRP: Impeller 287961 OPEN B22 Z4, Please add the power demand of the degassing unit = 0.5 kW

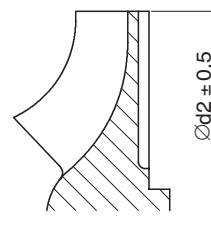
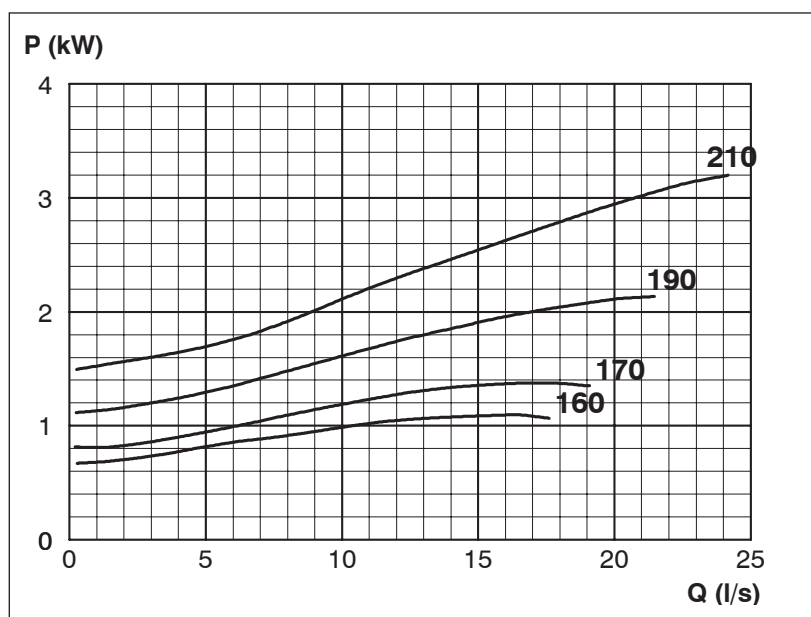
ISSP: Impeller 287961 OPEN B22 Z4, Please add the power demand of the degassing unit = 0.9 kW

Performance Curve - ISP65-200-O-1440

1440 rpm



Impeller Dia
Ød ₂ (mm)
210
205
200
195
190
185
180
175
170
165
160



MTP127

Exclusively Distributed by